

Thermal Test Report

CoolBlock[®] SQ-01-2x2MX + Lumileds Luxeon XR-M L2M0-4070004MC2200

- Measurement of the temperature rise and case temperature of 4 pcs Lumileds Luxeon M emitters on the Lumileds Luxeon XR-M 2X2MX platform.
- Under various driving currents 700mA and 1050mA.



Date: 2016.05.06
Author: Saito Chen
Mail: saito@mechatronix-asia.com

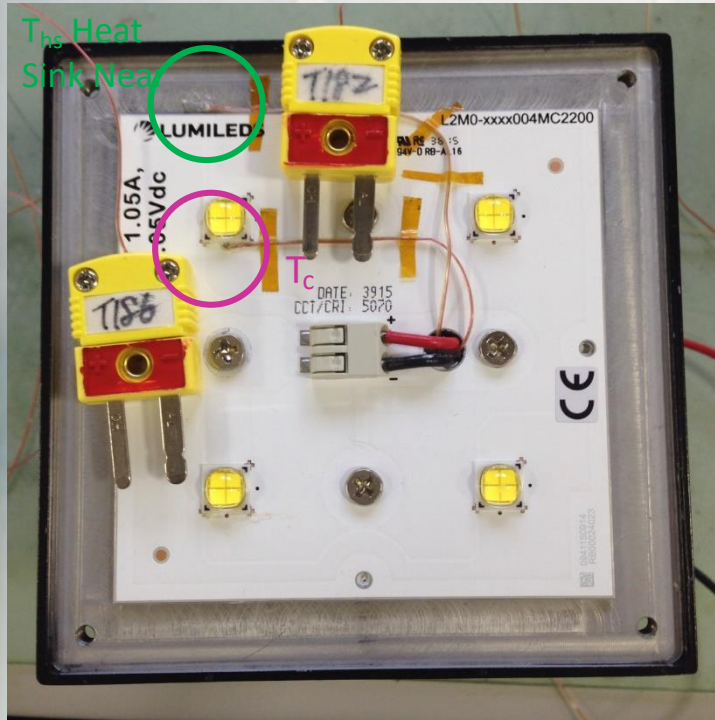
MechaTronix

www.led-heatsink.com

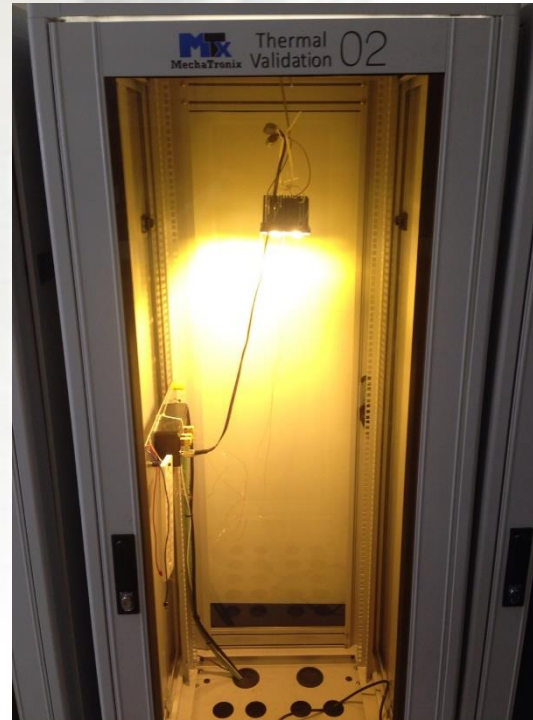
Tel: +886-7-381-5892 | Fax: +886-7-383-9293

No.818, Dashun 2nd Rd., Sanmin Dist., Kaohsiung City 80787, Taiwan

• Test Setup



Locations of T_c and T_{hs} Heat Sink Near

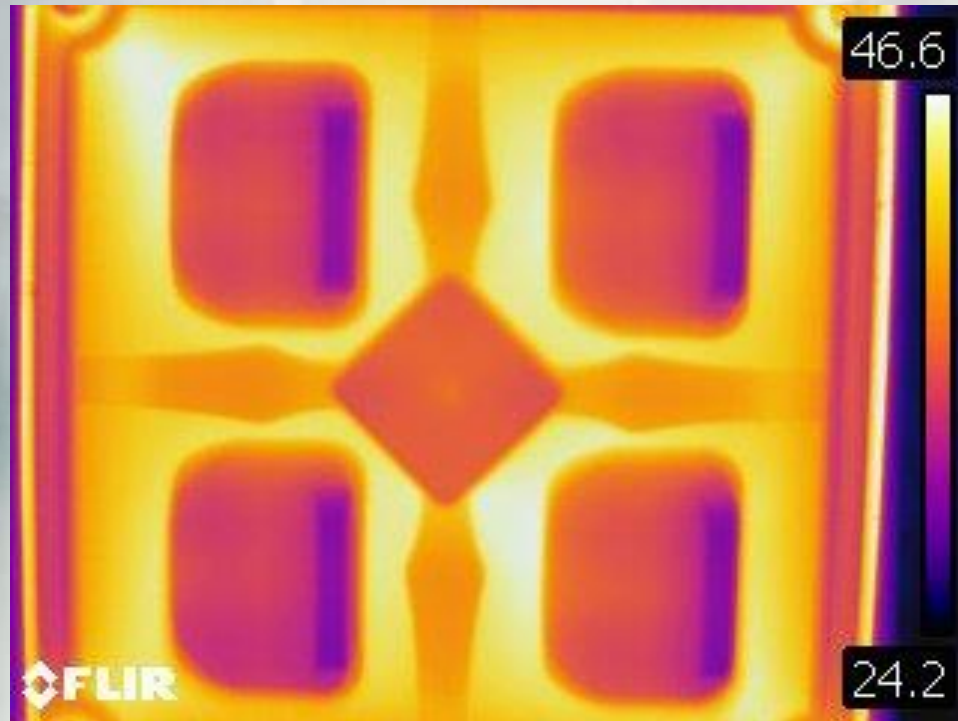


Test Set-up

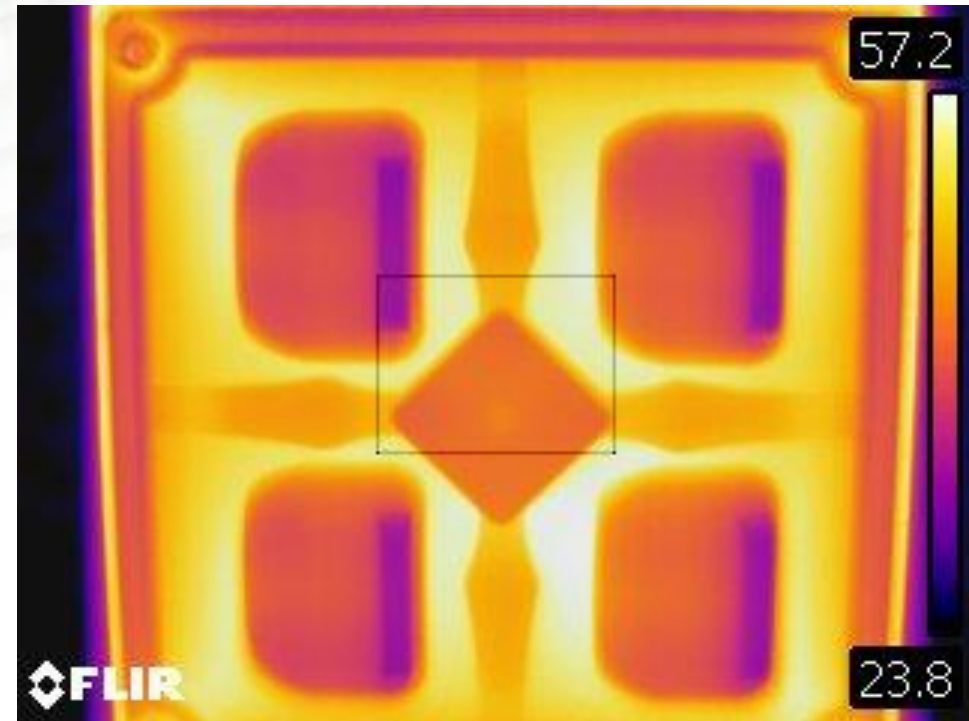
- Heat sink:
CoolBlock® SQ-01-2x2MX
- LED package:
LUXEON XR-M L2M0-4070004MC2200
- LED lens:
Ledil 2x2MX 4630/2
- Thermal pad:
Laird Tgrease 1500
- If (mA):
700 / 1050

• IR Images

Photo by Infrared Camera
Model: FLIR-T62101



If: 700mA



If: 1050mA

Results Table

If (mA)	Vf (V)	P (W)	Stablizati on Time (Sec)	T _c (°C)	T _{hs} (°C)	T _{ambient} (°C)	ΔT_{hs-amb} heat sink rise temperature (°C)
700	44.40	31.08	9510	57.12	50.15	22.74	29.35
1050	44.56	46.79	20840	73.66	62.69	22.79	50.87

Temperature Rise Curves

