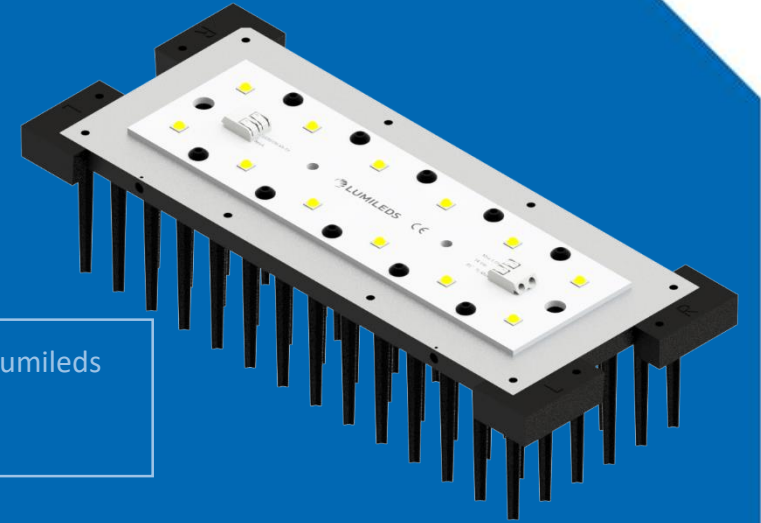


Thermal Test Report



CoolBlock LX01-2x6+LumiLEDs LUXEON XR-TX L2T0-5770012M00000(Tilted)

- Measurement of the temperature rise and case temperature of 12 pcs Lumileds Luxeon TX emitters on the Lumileds Luxeon XR-TX 2X6MX platform.
- Under various driving currents 700mA and 1050mA.



Date: 2017.03.04
Author: Saito Chen
Mail: saito@mechatronix-asia.com

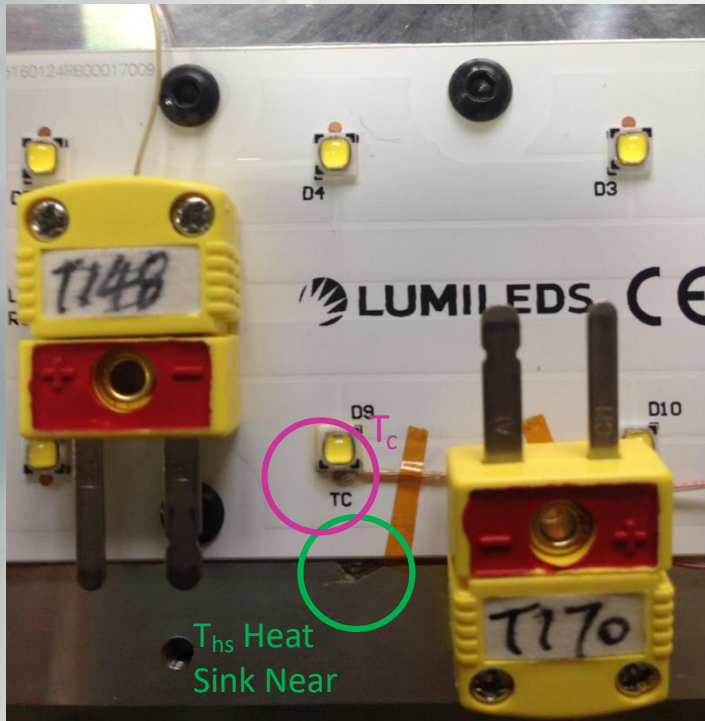
MechaTronix

www.led-heatsink.com

Tel: +886-7-381-5892 | Fax: +886-7-383-9293

No.818, Dashun 2nd Rd., Sanmin Dist., Kaohsiung City 80787, Taiwan

• Test Setup



Locations of T_c and T_{hs} Heat Sink Near

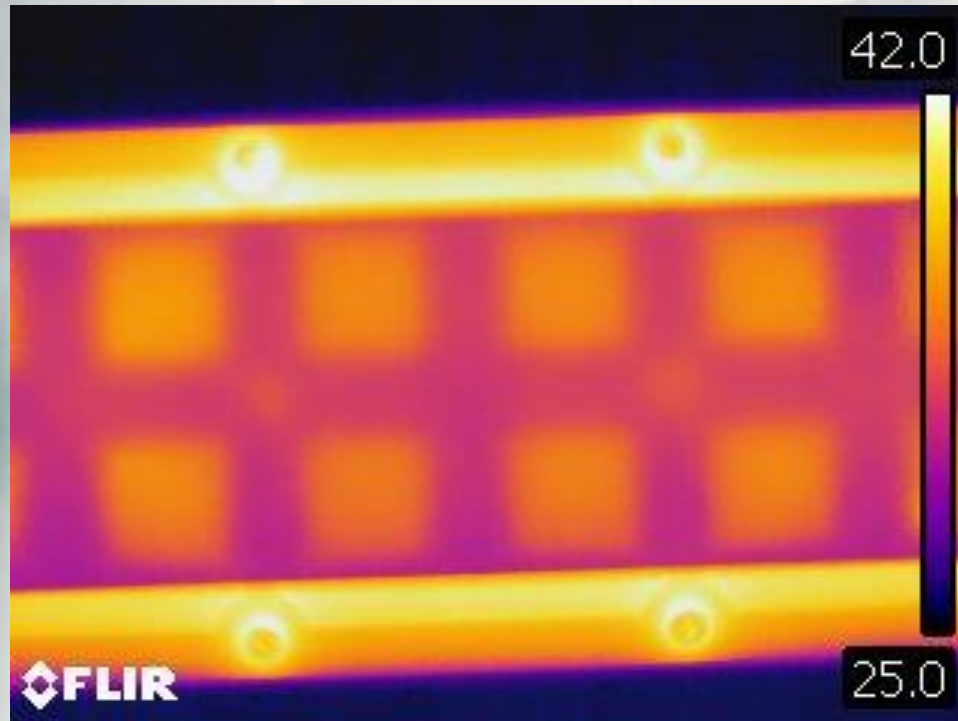


Test Set-up

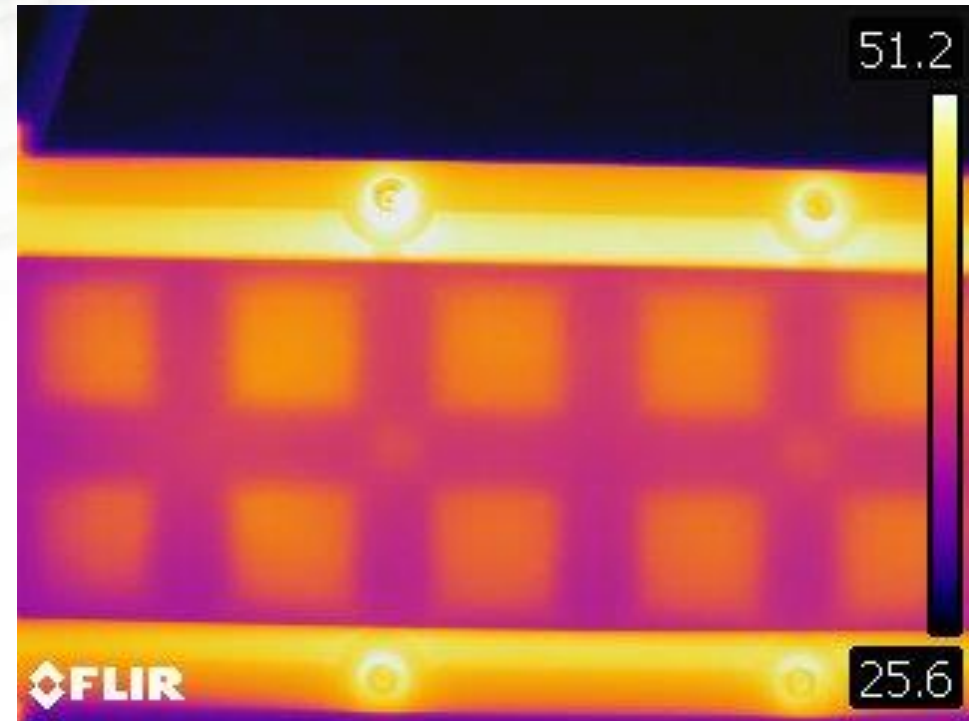
- Heat sink:
CoolBlock® SQ-01-2x2MX
- LED package:
LumiLEDs L2T0-5770012M00000
- LED lens:
Ledil HB-IP-2x6
- Thermal pad:
Loctite PSX-D
- I_f (mA):
700 / 1050
- Orientation:
Tilted 45°

• IR Images

Photo by Infrared Camera
Model: FLIR-T62101



If: 700mA



If: 1050mA

· Results Table

If (mA)	Vf (V)	P (W)	Stablizati on Time (Sec)	T _c (°C)	T _{hs} (°C)	T _{ambient} (°C)	ΔT_{hs-amb} heat sink rise temperature (°C)
700	34.30	24.01	18150	47.28	43.63	23.13	24.15
1050	34.75	36.48	31430	59.67	54.85	24.07	35.6

Temperature Rise Curves

