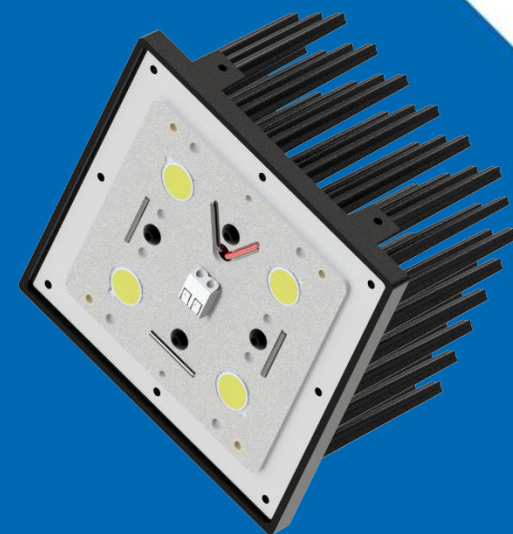


Thermal Test Report

CoolBlock[®] SQ-01-2x2MX + Citizen CLU028-0604C4-503M2K1

- Measurement of the temperature rise and case temperature of 4 pcs Citizen CLU028-0604C4-503M2K1 emitters with CoolConnect Holder 2x2MX-02
- Under various driving currents 700mA.



Date: 2017.07.24
Author: Saito Chen
Mail: saito@mechatronix-asia.com

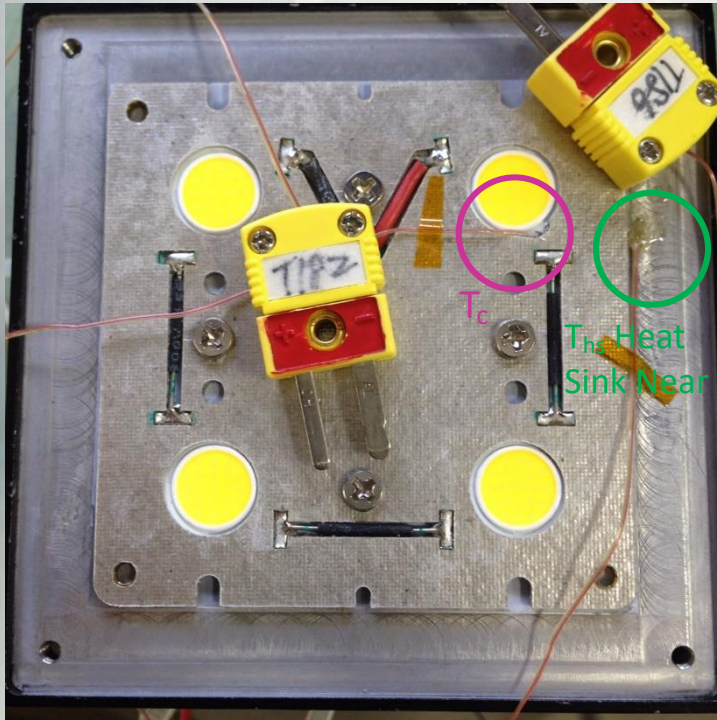
MechaTronix

www.led-heatsink.com

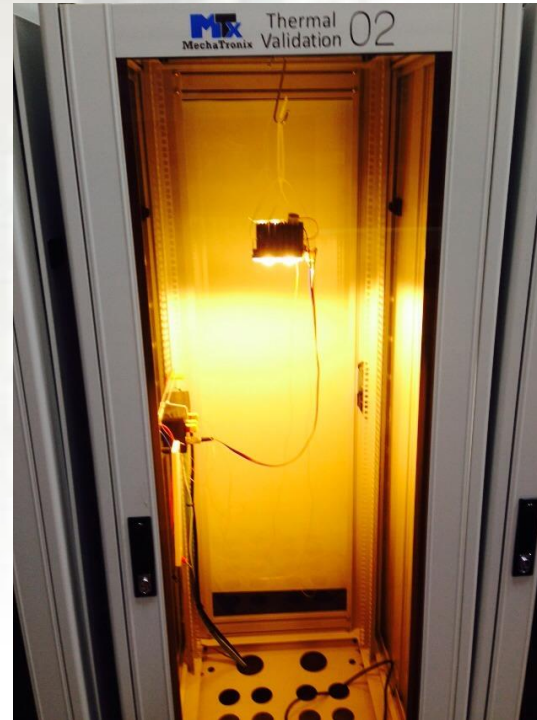
Tel: +886-7-381-5892 | Fax: +886-7-383-9293

No.818, Dashun 2nd Rd., Sanmin Dist., Kaohsiung City 80787, Taiwan

• Test Setup



Locations of T_c and T_{hs} Heat Sink Near

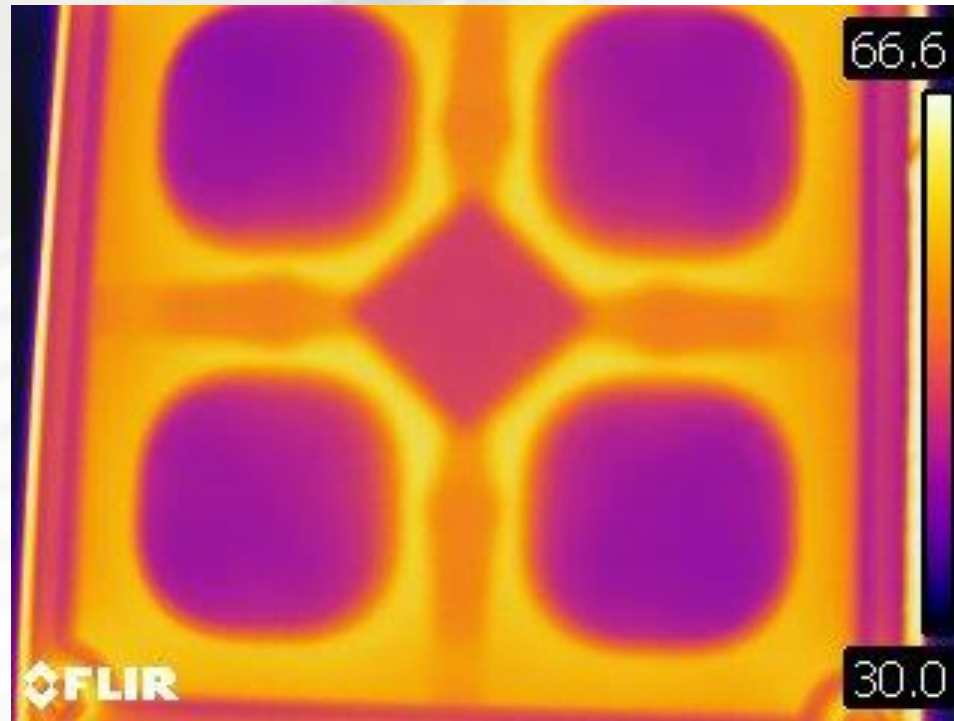


Test Set-up

- Heat sink:
CoolBlock® SQ-01-2x2MX
- LED package:
CLU028-0604C4-503M2K1
- LED lens:
Ledil CS15389_STRADA-2X2MX-T2-S
- Thermal pad:
Loctite PSX-D
- I_f (mA):
700
- V_f (V):
73.61
- P_e (W):
51.52

• IR Images

Photo by Infrared Camera
Model: FLIR-T62101



If: 700mA

· Results Table

If (mA)	Vf (V)	P (W)	Stablizati on Time (Sec)	T _c (°C)	T _{hs} (°C)	T _{ambient} (°C)	ΔT_{hs-amb} heat sink rise temperature (°C)
700	73.61	51.52	13430	76.25	69.89	26.88	49.37

Temperature Rise Curves

