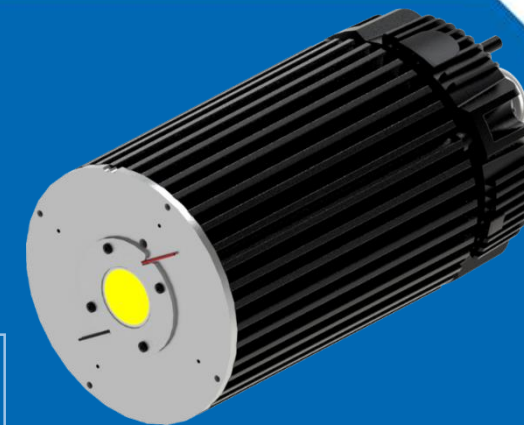


Thermal Test Report

CoolBay® Giga Wide-01 + Citizen CLU048-1818C4-403M2K1

- Measurement of the temperature rise and case temperature of Citizen CLU048-1818C4-403M2K1 emitters with Bender+Wirth CoolConnect® holder COB 28x28.
- Under various driving currents 2600mA.



Date: 2016.08.31
Author: Saito Chen
Mail: saito@mechatronix-asia.com

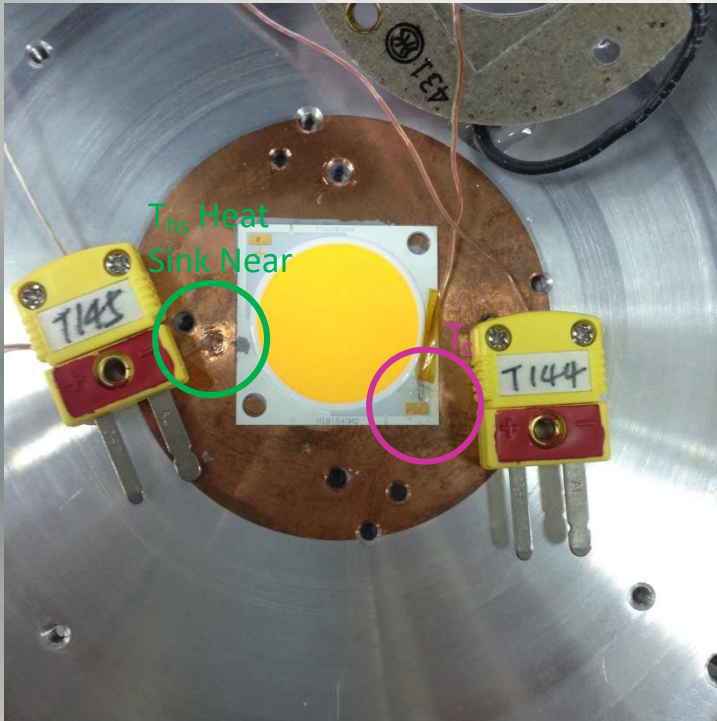
MechaTronix

www.led-heatsink.com

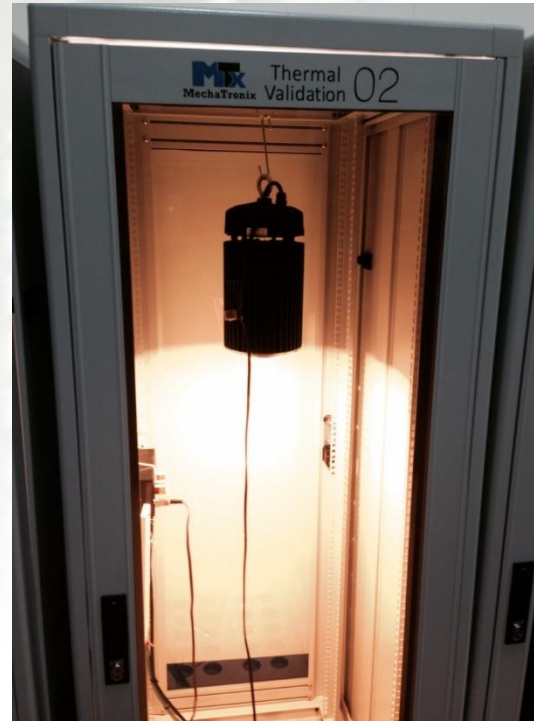
Tel: +886-7-381-5892 | Fax: +886-7-383-9293

No.818, Dashun 2nd Rd., Sanmin Dist., Kaohsiung City 80787, Taiwan

• Test Setup



Locations of T_c and T_{hs} Heat Sink Near

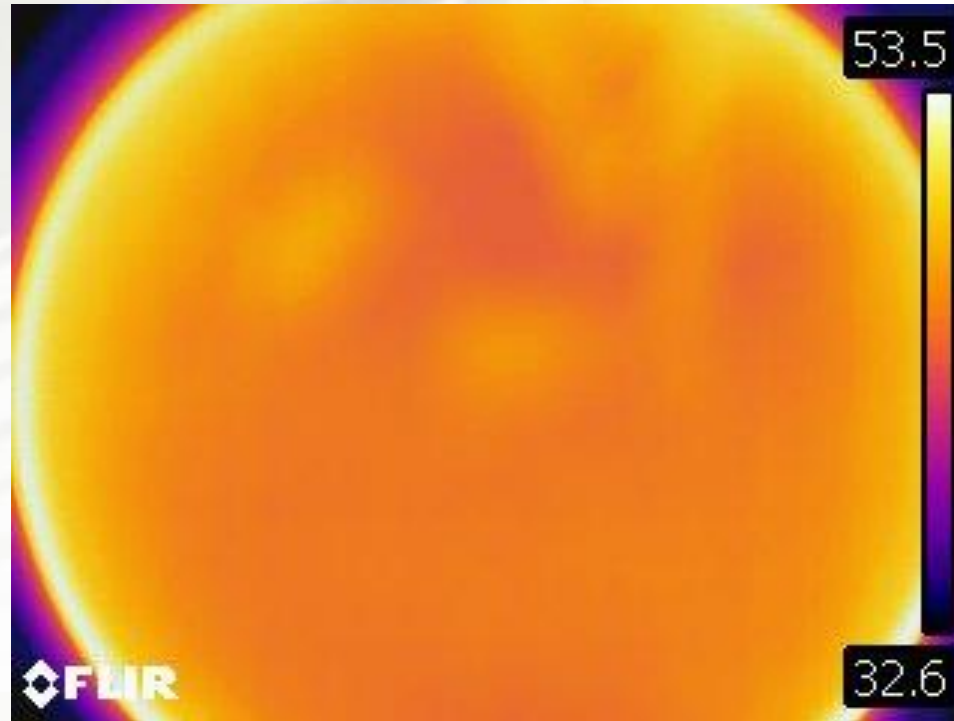


Test Set-up

- Heat sink:
CoolBay® Giga-B
- LED package:
Citizen CLU048-1818C4-403M2K1
- LED driver:
Mean Well HBG-160-60&HBG driver ring-01(M10)
- Connector set:
HBG-160 connector set
- LED holder:
Bender+Wirth CoolConnect® holder COB 28x28
- LED lens:
CoolBay Lens 120° Clear
- Thermal pad:
PSX-D
- If (mA):
2600

• IR Images

Photo by Infrared Camera
Model: FLIR-T62101



If: 2600mA

• Results Table

If (mA)	Stablization Time (Sec)	T _c (°C)	T _{hs} (°C)	T _{ambient} (°C)	ΔT _{hs-amb} heat sink rise temperature (°C)
2600	12920	68.17	66.52	26.79	41.38

Temperature Rise Curves

