

Thermal Test Report



CoolBlock® SQ-01-2x2MX + ADURA LUX-M 1962-A SQR-105048D- 04LUXM-308-1x4

- Measurement of the temperature rise and case temperature of 4 pcs Lumileds Luxeon M emitters on the Adura 2X2MX platform.
- Under various driving currents 700mA .



Date: 2016.06.16
Author: Saito Chen
Mail: saito@mechatronix-asia.com

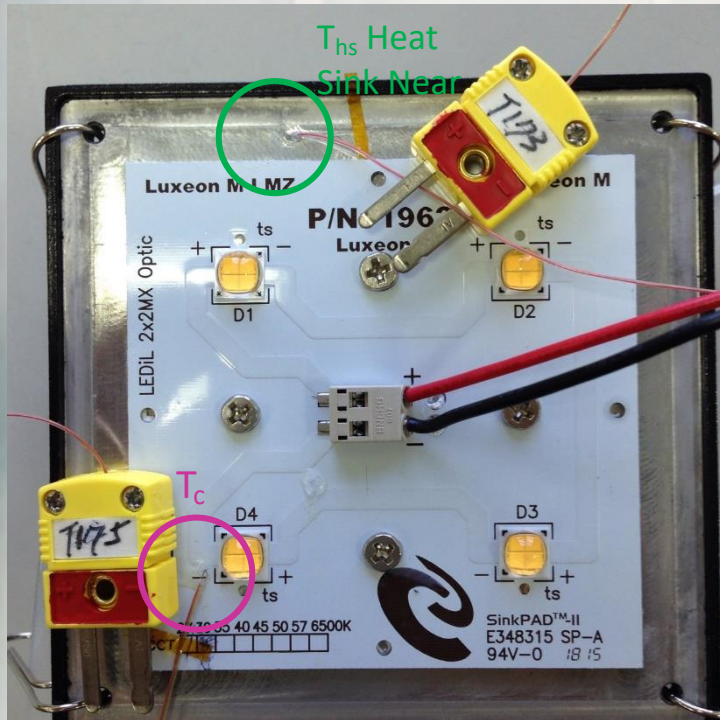
MechaTronix

www.led-heatsink.com

Tel: +886-7-381-5892 | Fax: +886-7-383-9293

No.818, Dashun 2nd Rd., Sanmin Dist., Kaohsiung City 80787, Taiwan

• Test Setup



Locations of T_c and T_{hs} Heat Sink Near

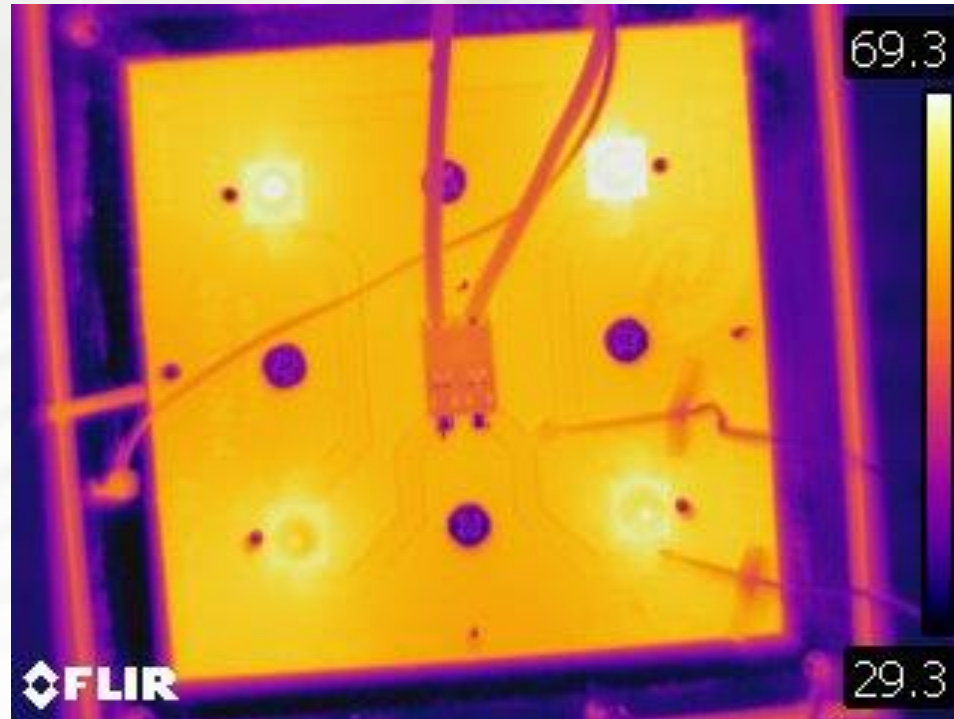


Test Set-up

- Heat sink:
CoolBlock® SQ-01-2x2MX
- LED package:
ADURA LUX-M 1962-A SQR-105048D-04LUXM-308-1x4
- Thermal pad:
Laird Tgrease 1500
- If (mA):
700

• IR Images

Photo by Infrared Camera
Model: FLIR-T62101



If: 700mA

· Results Table

If (mA)	Vf (V)	P (W)	Stablization Time (Sec)	T _c (°C)	T _{hs} (°C)	T _{ambient} (°C)	ΔT_{hs-amb} heat sink rise temperature (°C)
700	44.77	31.33	7480	60.54	55.99	25.94	34.6

Temperature Rise Curves

