

LPF8668-ZHC Seoul Semiconductor Pin Fin LED Cooler ø86mm

Mounting Instruction

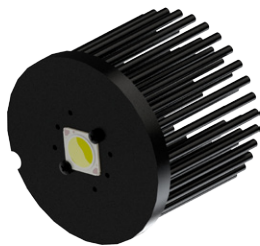
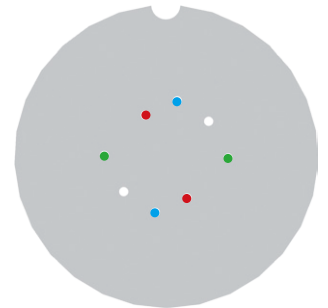


SEOUL SEMICONDUCTOR

The new Seoul Semiconductor ZC series Chip-On-Board (COB) LED Arrays offer high lumen density and efficacies of up to 140lm/W in a single, easy-to-use LED component family. Available in all major color temperatures from 2700K up to 6000K, these high flux packages deliver system level performance of 700 lumens to over 6,000 lumens. The new ZC series family is available in a single 3-step MacAdam Ellipse binning, ensuring excellent color consistency with minimum CRI options of 70, and 80 combining high quality of light with high efficacy.

Mounting indicator marks overview

MechaTronix recommends the use of a high thermal conductive interface between the LED module and the LED cooler. Either thermal grease, a thermal pad or a phase change thermal pad thickness 0.1-0.15mm is recommended. Thermal pads or phase change thermal pads can be pre-applied from MechaTronix.



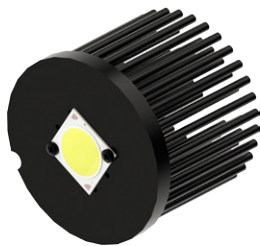
Seoul Semiconductor ZC 12 / ZC 18 LED COB

Model names

- SDW02F1C
- SDW82F1C
- SDW92F1C
- SDW03F1C
- SDW83F1C
- SDW93F1C

Mounting

- Direct mounting with 2 screws M3 x 6mm
Red indicator marks
- With Zhaga Book 3 LED holder
BJB Spotlight connector 47.319.2021
Ideal Industries Chip-Lok™ holder 50-2103CT
TE Connectivity Lumawise type Z50 2213254-1
TE Connectivity Lumawise type Z50 2213254-2
Mounting with 2 screws M3 x 6mm
Green indicator marks



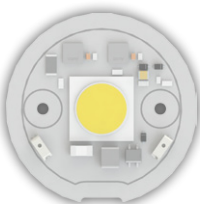
Seoul Semiconductor ZC 25 / ZC 40 LED COB

Model names

- SDW04F1C
- SDW84F1C
- SDW94F1C
- SDW05F1C
- SDW85F1C
- SDW95F1C

Mounting

- Direct mounting with 2 screws M3 x 6mm
Blue indicator marks
- With Zhaga Book 3 LED holder
BJB Spotlight connector 47.319.2033
Ideal Industries Chip-Lok™ holder 50-2204CT
Mounting with 2 screws M3 x 6mm
Green indicator marks



Seoul Semiconductor ACrich AC Zhaga LED COB

Model names

- ACrich AC Zhaga COB 30W

Mounting

- Direct mounting with 2 screws M3 x 6mm
Green indicator marks