

## LPF8668-ZHC Luminus Pin Fin LED Cooler ø86mm

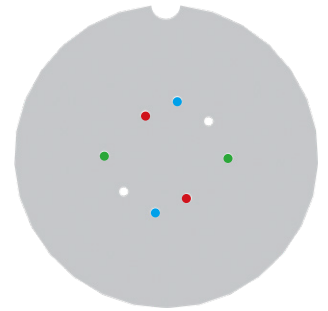
### Mounting Instruction



Patented, high performance Luminus LEDs are the brightest and most versatile solid state light sources available today, redefining the solid state lighting landscape by enabling the adoption of LED technology into emerging markets. Luminus technology is used in commercial and industrial lighting fixtures, theatrical lighting, projectors, signs, medical equipment, UV curing... just about anywhere a bright, efficient, reliable, long-life light source is needed.

#### Mounting indicator marks overview

MechaTronix recommends the use of a high thermal conductive interface between the LED module and the LED cooler. Either thermal grease, a thermal pad or a phase change thermal pad thickness 0.1-0.15mm is recommended. Thermal pads or phase change thermal pads can be pre-applied from MechaTronix.



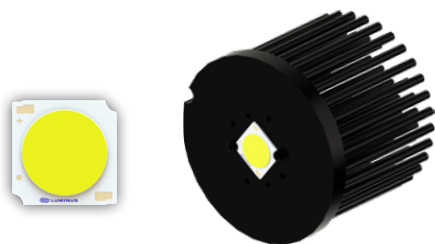
#### Luminus Gen 4 COB Array

##### Model names

- CLM-9
- CXM-9 (AC)

##### Mounting

- With Zhaga Book 3 LED holder  
 Bender+Wirth 634a  
 Mounting with 2 screws M3 x 6mm  
 Green indicator marks



#### Luminus Gen 4 COB Array

##### Model names

- CIM-14
- CLM-14
- CXM-14 (AC)
- CGM-14

##### Mounting

- Direct mounting with 2 screws M3 x 6mm  
 Red indicator marks
- With Zhaga Book 3 LED holder  
 BJB spotlight connector 47.319.2021  
 Bender+Wirth 633a  
 TE Connectivity Lumawise type Z50 2213254  
 Mounting with 2 screws M3 x 6mm  
 Green indicator marks



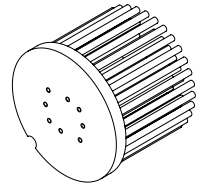
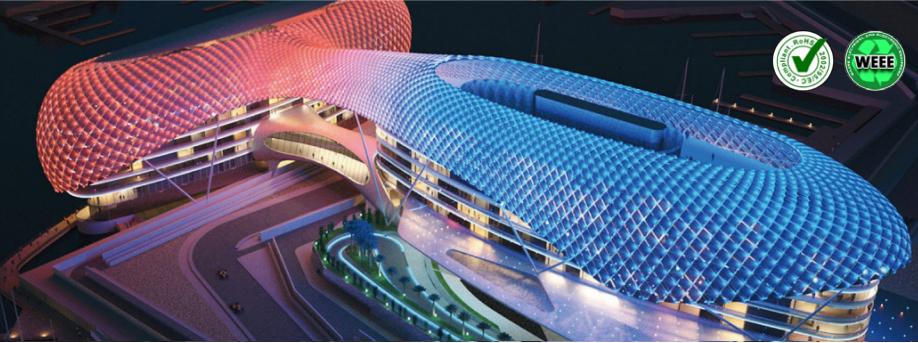
#### Luminus Gen 4 COB Array

##### Model names

- CXM-18

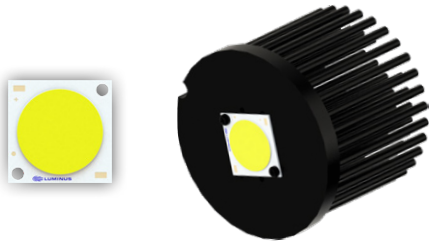
##### Mounting

- With Zhaga Book 3 LED holder  
 BJB spotlight connector 47.319.2281  
 Mounting with 2 screws M3 x 6mm  
 Green indicator marks



## LPF8668-ZHC Luminus Pin Fin LED Cooler ø86mm

### Mounting Instruction



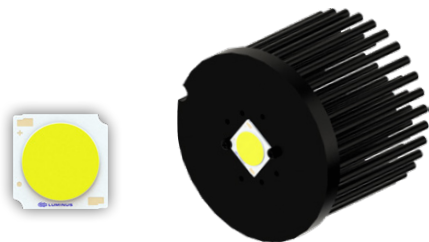
#### Luminus Gen 4 COB Array

##### Model names

- CIM-22
- CLM-22

##### Mounting

- Direct mounting with 2 screws M3 x 6mm  
Blue indicator marks
- With Zhaga Book 3 LED holder  
BJB spotlight connector 47.319.2033  
Bender+Wirth 631a  
Mounting with 2 screws M3 x 6mm  
Green indicator marks



#### Luminus Gen 3 COB Array

##### Model names

- CXM-11 (AC)
- CIM-14 (AC)
- CLM-14 (AC)
- CXM-14 (AC)

##### Mounting

- Direct mounting with 2 screws M3 x 6mm  
Red indicator marks
- With Zhaga Book 3 LED holder  
BJB spotlight connector 47.319.2021  
Bender+Wirth 633a  
TE Connectivity Lumawise type Z50 2213254  
Mounting with 2 screws M3 x 6mm  
Green indicator marks



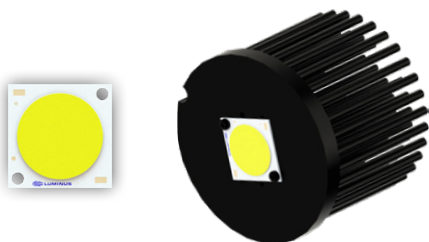
#### Luminus Gen 3 COB Array

##### Model names

- CXM-18 (AA)

##### Mounting

- With Zhaga Book 3 LED holder  
BJB spotlight connector 47.319.2281  
Mounting with 2 screws M3 x 6mm  
Green indicator marks



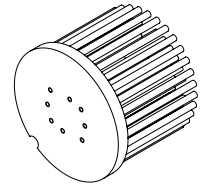
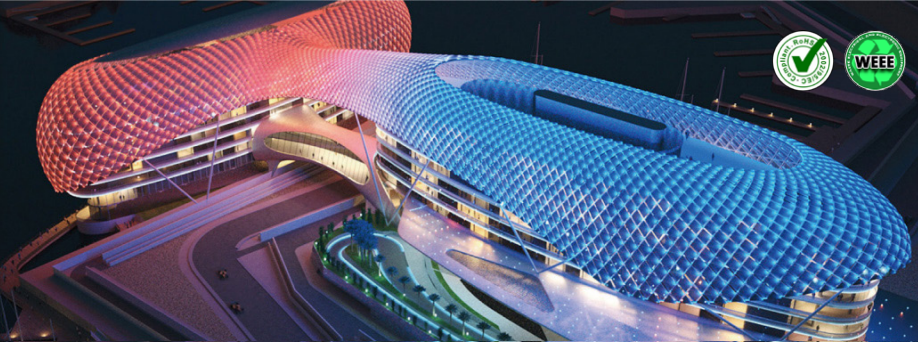
#### Luminus Gen 3 COB Array

##### Model names

- CLM-22 (AC)

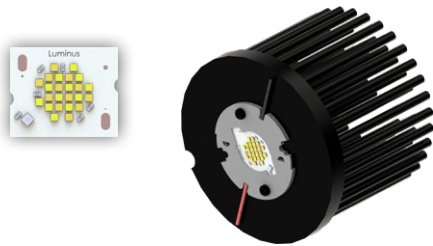
##### Mounting

- Direct mounting with 2 screws M3 x 6mm  
Blue indicator marks
- With Zhaga Book 3 LED holder  
BJB spotlight connector 47.319.2033  
Bender+Wirth 631a  
Mounting with 2 screws M3 x 6mm  
Green indicator marks



## LPF8668-ZHC Luminus Pin Fin LED Cooler ø86mm

### Mounting Instruction



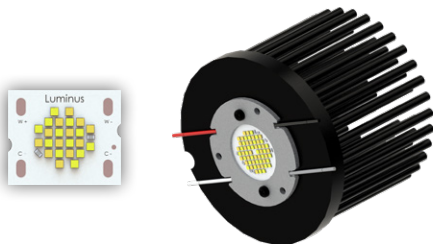
#### Luminus Dynamic COB Warm Dimming Modules

##### Model names

- CDM-14
- CDM-18

##### Mounting

- With Zhaga Book 3 LED holder  
BJB spotlight connector 47.360.5090  
Bender+Wirth 491 Typ L8  
Mounting with 2 screws M3 x 6mm  
Green indicator marks



#### Luminus Dynamic COB Two Channel CCT Tunable Modules

##### Model names

- CTM-22

##### Mounting

- With Zhaga Book 3 LED holder  
Bender+Wirth 494 Typ Z1  
Mounting with 2 screws M3 x 6mm  
Green indicator marks