

## LPF8668-ZHC Cree XLamp Pin Fin LED Cooler ø86mm

### Mounting Instruction

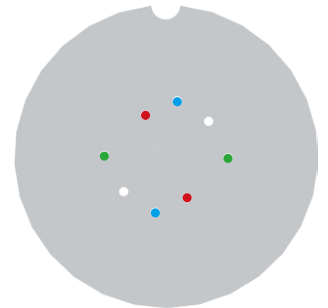


Cree XLamp® LEDs deliver the industry's best lighting-class performance and are application-optimized to enable the lowest system cost.

Cree's new CXA LED Arrays deliver high lumen output and efficacy in a family of single, easy-to-use components. Optimized to simplify designs and lower system cost, Cree's CXA LED arrays are available in system level performance from 300 to over 16,000 lumens and can enable applications ranging from GU10s and commercial downlights to outdoor area lighting and high-bay lighting.

#### Mounting indicator marks overview

MechaTronix recommends the use of a high thermal conductive interface between the LED module and the LED cooler. Either thermal grease, a thermal pad or a phase change thermal pad thickness 0.1-0.15mm is recommended. Thermal pads or phase change thermal pads can be pre-applied from MechaTronix.



#### Cree XLamp CXA18 / CXB18 LED Array

##### Model names

- CXA1816-xxxx
- CXB1816-xxxx
- CXA1820-xxxx
- CXB1820-xxxx

##### Mounting

- With Zhaga Book 3 LED holder
- BJB Spotlight connector 47.319.2131
- Ideal Industries Chip-Lok™ holder 50-2101CR
- TE Connectivity Lumawise type Z50 2213401
- Mounting with 2 screws M3 x 6mm
- Green indicator marks



#### Cree XLamp CXA25 LED Array

##### Model names

- CXA2520-xxxx
- CXA2530-xxxx

##### Mounting

- With Zhaga Book 3 LED holder
- BJB Spotlight connector 47.319.2141
- Ideal Industries Chip-Lok™ holder 50-2102CR
- TE Connectivity Lumawise type Z50 2213407
- Mounting with 2 screws M3 x 6mm
- Green indicator marks



#### Cree XLamp CMA15 LED Array

##### Model names

- CMA1516-xxxx

##### Mounting

- With Zhaga Book 3 LED holder
- Bender+Wirth Hybrid holder 641a available with different housings
- Mounting with 2 screws M3 x 6mm
- Green indicator marks



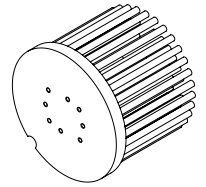
#### Cree XLamp CMA18 LED Array

##### Model names

- CMA1825-xxxx
- CMA1840-xxxx

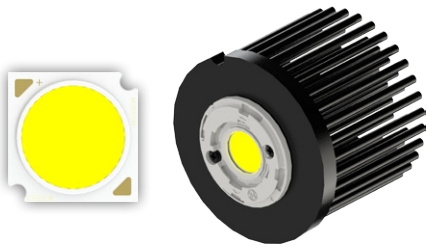
##### Mounting

- With Zhaga Book 3 LED holder
- Bender+Wirth Hybrid holder 637a available with different housings
- Mounting with 2 screws M3 x 6mm
- Green indicator marks



## LPF8668-ZHC Cree XLamp Pin Fin LED Cooler ø86mm

### Mounting Instruction



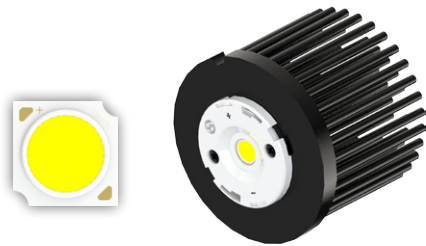
#### Cree XLamp CMA25 LED Array

##### Model names

- CMA2550-xxxx

##### Mounting

- With Zhaga Book 3 LED holder  
Bender+Wirth Hybrid holder 639a available with different housings  
Mounting with 2 screws M3 x 6mm  
Green indicator marks



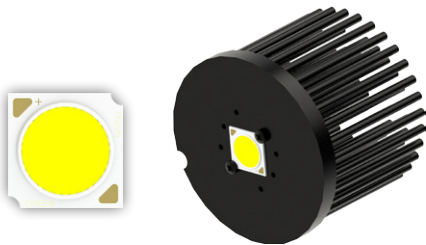
#### Cree XLamp CMT14 LED Array

##### Model names

- CMT1420-xxxx

##### Mounting

- With Zhaga Book 3 LED holder  
Bender+Wirth Hybrid holder 634a available with different housings  
Mounting with 2 screws M3 x 6mm  
Green indicator marks



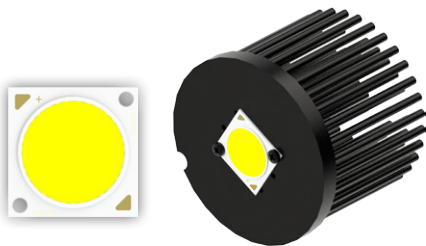
#### Cree XLamp CMT19 LED Array

##### Model names

- CMT1922-xxxx
- CMT1925-xxxx
- CMT1930-xxxx
- CMT1945-xxxx

##### Mounting

- Direct mounting with 2 screws M3 x 6mm  
Red indicator marks
- With Zhaga Book 3 LED holder  
TE Connectivity Lumawise type Z50 2213254  
Bender+Wirth Hybrid holder 633c available with different housings  
Mounting with 2 screws M3 x 6mm  
Green indicator marks



#### Cree XLamp CMT28 LED Array

##### Model names

- CMT2850-xxxx

##### Mounting

- Direct mounting with 2 screws M3 x 6mm  
Blue indicator marks
- With Zhaga Book 3 LED holder  
TE Connectivity Lumawise type Z50 2213480  
Bender+Wirth Hybrid holder 631b available with different housings  
Mounting with 2 screws M3 x 6mm  
Green indicator marks