

LPF8668-ZHC Bridgelux Pin Fin LED Cooler ø86mm

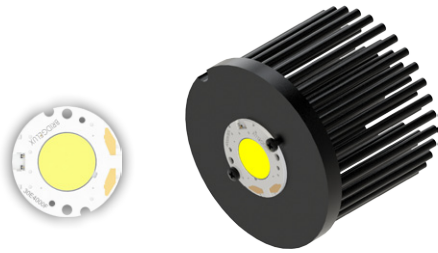
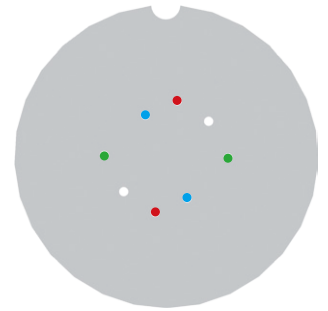
Mounting Instruction



Bridgelux is a leading provider of high power, cost effective and energy efficient light emitting diode (LED) solutions. Leveraging patented light source technology, Bridgelux LED Arrays replace traditional technologies (such as incandescent, halogen, fluorescent and high intensity discharge lighting) with integrated solid state light sources enabling high performance and energy-efficient products for the general lighting market.

Mounting indicator marks overview

MechaTronix recommends the use of a high thermal conductive interface between the LED module and the LED cooler. Either thermal grease, a thermal pad or a phase change thermal pad thickness 0.1-0.15mm is recommended. Thermal pads or phase change thermal pads can be pre-applied from MechaTronix.



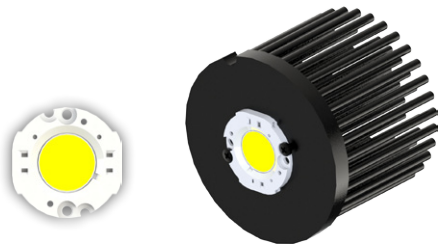
Bridgelux Gen 7 Vero 13 - 18 / Décor Vero 13 - 18 LED Array

Model names

- BXRC-xxx200x-x-7x
- BXRC-xxx400x-x-7x

Mounting

- Direct mounting with 2 screws M3 x 6mm
- Green indicator marks



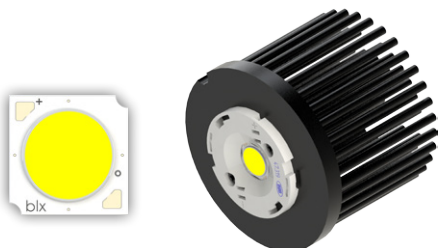
Bridgelux Gen7 Vero SE 13 - 18 / Décor Vero SE 13 - 18 LED Array

Model names

- BXRC-xxx200x-x-7x-SE
- BXRC-xxx400x-x-7x-SE

Mounting

- Direct mounting with 2 screws M3 x 6mm
- Green indicator marks



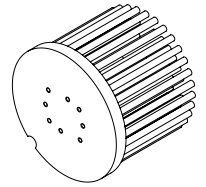
Bridgelux Gen 7 V series V13 LED Array

Model names

- BXRE-xxx200x-x-7x

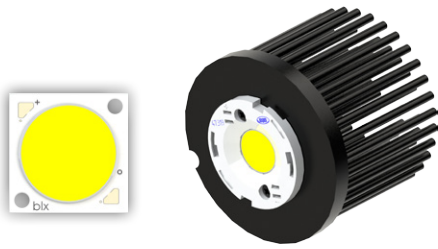
Mounting

- With Zhaga Book 3 LED holder
- BJB spotlight connector 47.319.2025
- Ideal Industries Chip-Lok™ holder 50-2103CT
- Ledil HEKLA solderless connector FP15949_HEKLA-I
- Mounting with 2 screws M3 x 6mm
- Green indicator marks
- Direct mounting with 2 screws M3 x 6mm
- Blue indicator marks



LPF8668-ZHC Bridgelux Pin Fin LED Cooler ø86mm

Mounting Instruction



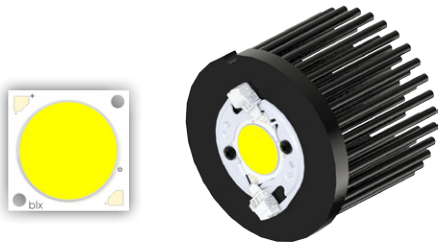
Bridgelux Gen7 V series V 18 LED Array

Model names

- BXRE-xxx400x-x-7x

Mounting

- With Zhaga Book 3 LED holder
BJB spotlight connector 47.319.2350
Mounting with 2 screws M3 x 6mm
Green indicator marks



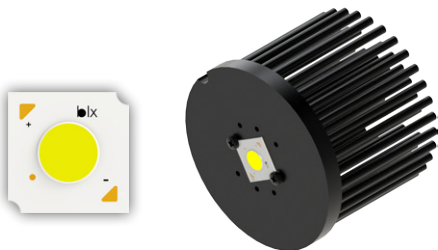
Bridgelux Gen7 V series V 22 LED Array

Model names

- BXRE-xxx650x-x-7x

Mounting

- With Zhaga Book 3 LED holder
BJB spotlight connector 47.319.2030
Ideal Industries Chip-Lok™ holder 50-2204CT
Bender+Wirth 431 Typ 2
Mounting with 2 screws M3 x 6mm
Green indicator marks
- Direct mounting with 2 screws M3 x 6mm
Red indicator marks



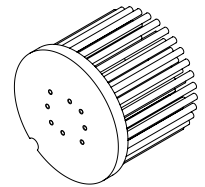
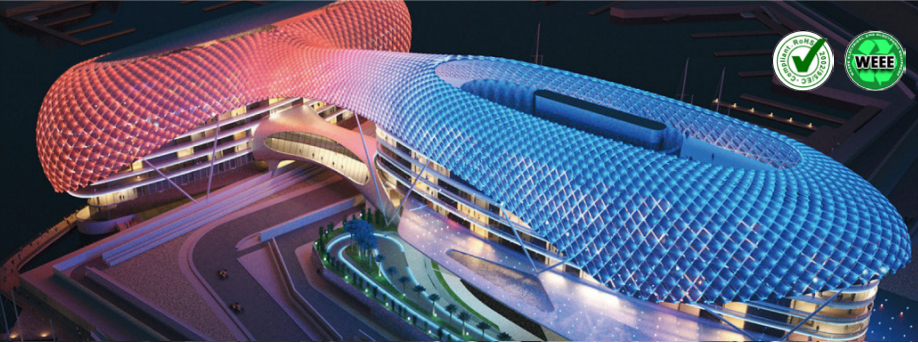
Bridgelux Gen 7 V series V9 HD LED Array

Model names

- BXRH-xxx300x-D-73

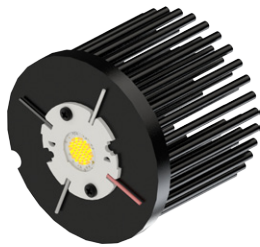
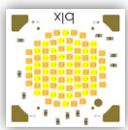
Mounting

- With Zhaga Book 3 LED holder
Bender+Wirth 496 Typ Z1
Mounting with 2 screws M3 x 6mm
Green indicator marks
- Direct mounting with 2 screws M3 x 6mm
Blue indicator marks



LPF8668-ZHC Bridgelux Pin Fin LED Cooler ø86mm

Mounting Instruction



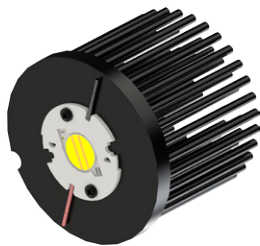
Bridgelux Vesta series Tunable White 13mm LED Array

Model names

- BXRV-TR-xxxxG-2000-A-15

Mounting

- With Zhaga Book 3 LED holder
BJB spotlight connector 47.319.2370
Bender+Wirth LED holder 492 Typ L8
Mounting with 2 screws M3 x 6mm
Green indicator marks



Bridgelux Vesta series Dim-To-Warm 15mm LED Array

Model names

- BXRV-DR-xxxxx-3000-A-13

Mounting

- With Zhaga Book 3 LED holder
Bender+Wirth LED holder 491 Typ L8
Mounting with 2 screws M3 x 6mm
Green indicator marks