

## LPF6768-ZHP Lumileds Pin Fin LED Cooler ø67mm

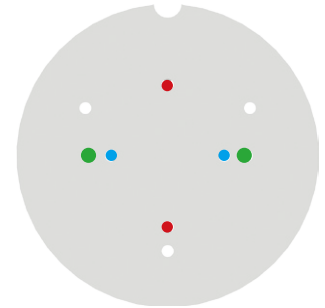
### Mounting Instruction



Lumileds LUXEON COB is a new breakthrough in efficacy for arrays. Due to its industry leading small Light Emitting Surfaces (LES), the COB array is very easy work with and will enable easier and less expensive designs. All LUXEON COBs are available in a single 3-step as well as a single 5-step MacAdam Ellipse, ensuring uniform optical performance in the application. Ideal applications include down lights and directional lamps.

#### Mounting indicator marks overview

MechaTronix recommends the use of a high thermal conductive interface between the LED module and the LED cooler. Either thermal grease, a thermal pad or a phase change thermal pad thickness 0.1-0.15mm is recommended. Thermal pads or phase change thermal pads can be pre-applied from MechaTronix.



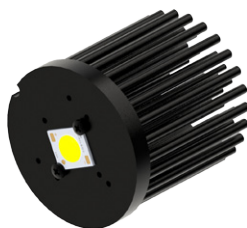
#### Lumileds Gen 4 Luxeon CoB Core Range 1202s

##### Model names

- L2C5-xxxx1202E0600

##### Mounting

- With Zhaga Book 11 LED holder  
BJB spotlight connector 47.319.6180  
Ideal Industries Chip-Lok™ holder 50-2000P  
Mounting with 2 screws M3 x 6mm  
Green indicator marks
- With Zhaga Book 3 LED holder  
Ledil HEKLA solderless connector FP15947\_HEKLA-G  
Mounting with 2 screws M3 x 6mm  
Orange indicator marks



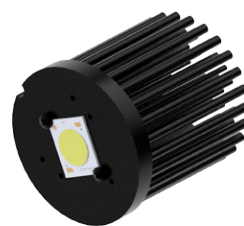
#### Lumileds Gen 4 Luxeon CoB Core Range 1202 - 1203

##### Model names

- L2C5-xxxx1202E0900
- L2C5-xxxx1203x0900

##### Mounting

- Direct mounting with 2 screws M3 x 6mm  
Blue indicator marks
- With Zhaga Book 3 LED holder  
Ideal Industries Chip-Lok™ holder 50-2100NC  
Ledil HEKLA solderless connector FP15948\_HEKLA-H  
TE Connectivity Lumawise type Z50 2213382  
Mounting with 2 screws M3 x 6mm  
Green indicator marks



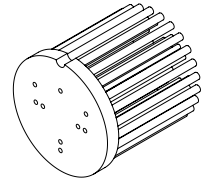
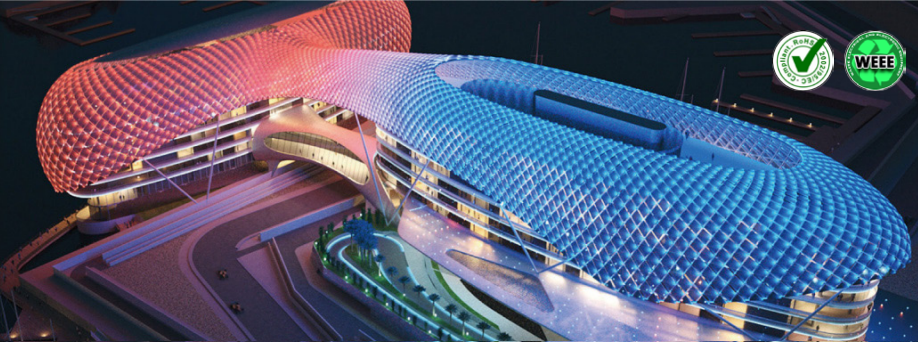
#### Lumileds Gen 4 Luxeon CoB Core Range 1204 - 1205 - 1208

##### Model names

- L2C5-xxxx1204x1300
- L2C5-xxxx1205x1300
- L2C5-xxxx1208x1500

##### Mounting

- Direct mounting with 2 screws M3 x 6mm  
Red indicator marks
- With Zhaga Book 3 LED holder  
BJB spotlight connector 47.319.2013  
Ideal Industries Chip-Lok™ holder 50-2100SH  
TE Connectivity Lumawise type Z50 2213130  
Mounting with 2 screws M3 x 6mm  
Green indicator marks



## LPF6768-ZHP Lumileds Pin Fin LED Cooler ø67mm

### Mounting Instruction



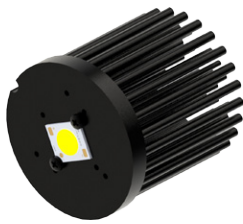
#### Lumileds Gen 4 Luxeon CoB Core Range High Density 1202

##### Model names

- L2C5-xxxx1202EH600

##### Mounting

- With Zhaga Book 11 LED holder  
BJB spotlight connector 47.319.2013  
Ideal Industries Chip-Lok™ holder 50-2100SH  
Mounting with 2 screws M3 x 6mm  
Orange indicator marks
- With Zhaga Book 3 LED holder  
Ledil HEKLA solderless connector FP15947\_HEKLA-G  
Mounting with 2 screws M3 x 6mm  
Green indicator marks



#### Lumileds Gen 4 Luxeon CoB Core Range High Density 1204 - 1205

##### Model names

- L2C5-xxxx1204E0900
- L2C5-xxxx1205E1100

##### Mounting

- Direct mounting with 2 screws M3 x 6mm  
Blue indicator marks
- With Zhaga Book 3 LED holder  
Ideal Industries Chip-Lok™ holder 50-2100NC  
Ledil HEKLA solderless connector FP15948\_HEKLA-H  
TE Connectivity Lumawise type Z50 2213382  
Mounting with 2 screws M3 x 6mm  
Green indicator marks