

ø67 - H68 (mm)
Rth 2.1 °C/W - Power Pd 24W

[MORE PRODUCT DETAILS](#)

LPF6768-ZHP Cree XLamp Pin Fin LED Cooler ø67mm

Mounting Instruction

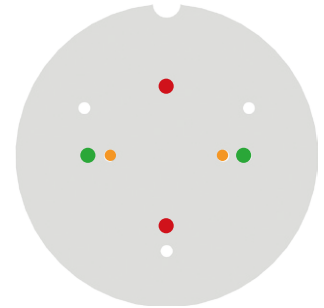


Cree XLamp® LEDs deliver the industry's best lighting-class performance and are application-optimized to enable the lowest system cost.

Cree's new CXA LED Arrays deliver high lumen output and efficacy in a family of single, easy-to-use components. Optimized to simplify designs and lower system cost, Cree's CXA LED arrays are available in system level performance from 300 to over 16,000 lumens and can enable applications ranging from GU10s and commercial downlights to outdoor area lighting and high-bay lighting.

Mounting indicator marks overview

MechaTronix recommends the use of a high thermal conductive interface between the LED module and the LED cooler. Either thermal grease, a thermal pad or a phase change thermal pad thickness 0.1-0.15mm is recommended. Thermal pads or phase change thermal pads can be pre-applied from MechaTronix.



Cree XLamp CXA13 / CXB13 LED Array

Model names

- CXA1304-xxxx
- CXB1304-xxxx
- CXA1310-xxxx

Mounting

- With Zhaga Book 11 LED holder
- BJB Spotlight connector 47.319.6120
- Ideal Industries Chip-Lok™ holder 50-2000CR
- Mounting with 2 screws M3 x 6mm
- Orange indicator marks



Cree XLamp CXA15 / CXB15 LED Array

Model names

- CXA1507-xxxx
- CXB1507-xxxx
- CXA1512-xxxx
- CXB1512-xxxx
- CXA1520-xxxx

Mounting

- With Zhaga Book 11 LED holder
- BJB Spotlight connector 47.319.6101
- Ideal Industries Chip-Lok™ holder 50-2001CR
- Mounting with 2 screws M3 x 6mm
- Orange indicator marks



Cree XLamp CXA18 / CXB18 LED Array

Model names

- CXA1816-xxxx
- CXB1816-xxxx
- CXA1820-xxxx
- CXB1820-xxxx

Mounting

- With Zhaga Book 3 LED holder
- BJB Spotlight connector 47.319.2131
- Ideal Industries Chip-Lok™ holder 50-2101CR
- TE Connectivity Lumawise type Z50 2213401-1
- TE Connectivity Lumawise type Z50 2213401-2
- Mounting with 2 screws M3 x 6mm
- Green indicator marks



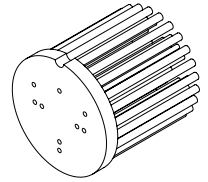
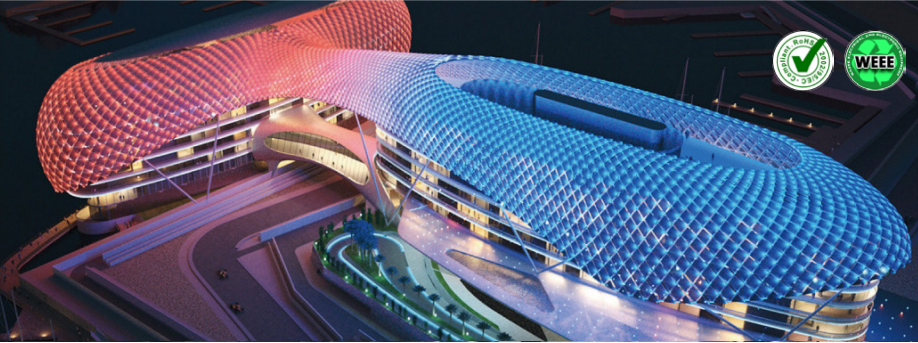
Cree XLamp CMA13 LED Array

Model names

- CMA1303-xxxx
- CMA1306-xxxx

Mounting

- With Zhaga Book 3 LED holder
- Bender+Wirth Hybrid holder 634c available with different housings
- Mounting with 2 screws M3 x 6mm
- Green indicator marks



LPF6768-ZHP Cree XLamp Pin Fin LED Cooler ø67mm

Mounting Instruction



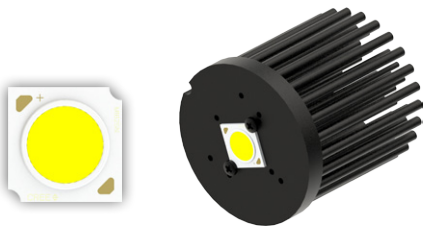
Cree XLamp CMA15 LED Array

Model names

- CMA1516-xxxx

Mounting

- With Zhaga Book 3 LED holder
Bender+Wirth Hybrid holder 641a available with different housings
Mounting with 2 screws M3 x 6mm
Green indicator marks



Cree XLamp CMA18 LED Array

Model names

- CMA1825-xxxx

Mounting

- Direct mounting with 2 screws M3 x 6mm
Orange indicator marks
- With Zhaga Book 3 LED holder
Bender+Wirth Hybrid holder 637a available with different housings
Mounting with 2 screws M3 x 6mm
Green indicator marks



Cree XLamp CMT14 LED Array

Model names

- CMT1412-xxxx
- CMT1420-xxxx

Mounting

- With Zhaga Book 11 LED holder
TE Connectivity Lumawise type Z35 2213678
Mounting with 2 screws M3 x 6mm
Orange indicator marks
- With Zhaga Book 3 LED holder
Bender+Wirth Hybrid holder 634a available with different housings
Mounting with 2 screws M3 x 6mm
Green indicator marks



Cree XLamp CMT19 LED Array

Model names

- CMT1922-xxxx
- CMT1925-xxxx
- CMT1930-xxxx

Mounting

- With Zhaga Book 3 LED holder
TE Connectivity Lumawise type Z50 2213254
Bender+Wirth Hybrid holder 633c available with different housings
Mounting with 2 screws M3 x 6mm
Green indicator marks