

LPF4768-ZHP Philips Pin Fin LED Cooler ø47mm

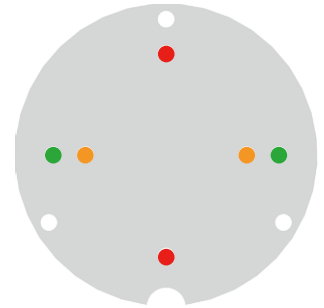
Mounting Instruction

PHILIPS

The third Philips Fortimo LED SLM generation is the ideal solution for spot lighting fixtures and highly efficient compact down light luminaires. It is specifically designed for the retail market showcasing retail merchandise in bright and vivid light. This generation is equipped with new Chip-On-Board (COB) LED technology. This technology enables the creation of the most efficient point source Philips LED system available.

Mounting indicator marks overview

MechaTronix recommends the use of a high thermal conductive interface between the LED module and the LED cooler. Either thermal grease, a thermal pad or a phase change thermal pad thickness 0.1-0.15mm is recommended. Thermal pads or phase change thermal pads can be pre-applied from MechaTronix.



Philips Fortimo SLM Gen4 LED Modules / Crisp White Spotlight Modules



Model names

- Fortimo LED SLM 1100lm xxx L9 G4 NA
- Fortimo LED SLM 1100lm 930 CW L9 G4
- Fortimo LED SLM 1100lm xxx L13 G4
- Fortimo LED SLM 1100lm 930 CW L13 G4
- Fortimo LED SLM 2000lm xxx L13 G4
- Fortimo LED SLM 2000lm 930 CW L13 G4

Mounting

- Direct mounting with 2 screws
M3 x 6mm
Green indicator marks

Philips Fortimo SLM 1202 Gen 6 / Premium White / Crisp White Spotlight Modules



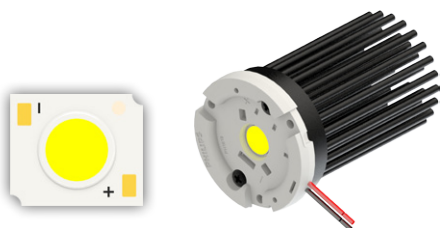
Model names

- Fortimo SLM C xxx xxx 1202 L06 1215 G6

Mounting

- With Zhaga Book 11 LED holder
BJB Spotlight connector
47.319.6180
Ideal Industries Chip-Lok™
holder 50-2000P
Mounting with 2 screws
M3 x 6mm
Orange indicator marks

Philips Fortimo SLM 1203 Gen 6 / Premium White / Crisp White Spotlight Modules



Model names

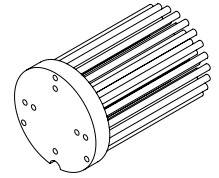
- Fortimo SLM C 1203 L09 1619 G6

Mounting

- Direct mounting with 2 screws
M3 x 6mm
Orange indicator marks
- With Zhaga Book 3 LED holder
Philips Fortimo SLM H xx 1619 G1
Mounting with 2 screws M3 x
6mm
Green indicator marks



LPF4768-ZHP



ø47 - H68 (mm)
Rth 3.9 °C/W - Power Pd 13W

[MORE PRODUCT DETAILS](#)

LPF4768-ZHP Philips Pin Fin LED Cooler ø47mm

Mounting Instruction



Philips Fortimo SLM 1205 Gen 6 / Premium White / Crisp White / Food application Spotlight Modules

Model names

- Fortimo SLM C xxx xxx 1205 L13 2024 G6

Mounting

- Direct mounting with 2 screws M3 x 6mm
Red indicator marks
- With Zhaga Book 3 LED holder Philips Fortimo SLM H xx 2024 G1
Mounting with 2 screws M3 x 6mm
Green indicator marks