

ø47 - H68 (mm)
Rth 3.9 °C/W - Power Pd 13W
MORE PRODUCT DETAILS

LPF4768-ZHP Edison Opto Pin Fin LED Cooler ø47mm

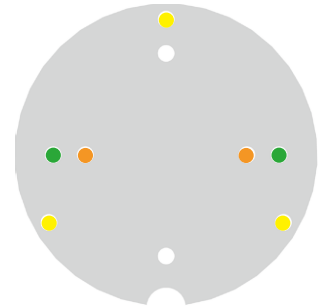
Mounting Instruction



Edison Opto with headquarters in Chung-Ho Dist, New Taipei City, Taiwan is a professional LED manufacture with specializes in designing and producing High-power LEDs, solid state lighting applications, LED sensors and SPDIFs. In response to rapid growth of capacity demand, Edison Opto has established factories in Dongguan and Yangzhou China and subsidiaries in USA and Germany. Edison Opto COB LED modules outstand in light quality and are available in the broadest lumen and CRI range available on the market.

Mounting indicator marks overview

MechaTronix recommends the use of a high thermal conductive interface between the LED module and the LED cooler. Either thermal grease, a thermal pad or a phase change thermal pad thickness 0.1-0.15mm is recommended. Thermal pads or phase change thermal pads can be pre-applied from MechaTronix.



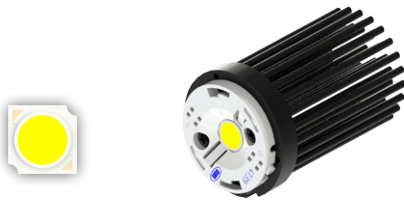
Edison Opto EdiPower III HM series

Model names 5W - 13W

- 2PHM05xxxx
- 2PHM09xxxx
- 2PHM13xxxx

Mounting

- With Zhaga Book 11 LED holder
BJB Spotlight connector 47.319.6060
Ideal Industries Chip-Lok™ holder 50-2002CT
Mounting with 2 screws M3 x 6mm
Orange indicator marks



Model Names 16W

- 2PHM16xxxx

Mounting

- With Zhaga Book 3 LED holder
BJB Spotlight connector 47.319.2021
Ideal Industries Chip-Lok™ holder 50-2103CT
TE Connectivity Lumawise type Z50 2213254-1
TE Connectivity Lumawise type Z50 2213254-2
Mounting with 2 screws M3 x 6mm
Green indicator marks



Edison Opto EdiLex Spot Light Module (SLM)

Model names

- 5PHR09xxxx
- 5PHR11xxxx

Mounting

- Direct mounting with 2 screws M3 x 8mm
Green indicator marks

Reflector ring Mounting

- This optional ring can be mounted on top of the Edison Opto EdiLex spot light module and provides in this way an easy plug-and-play attachment of various reflectors.
- Mounting with 3 screws M3 x 8mm
Yellow indicator marks

