

LPF4768-ZHP Zhaga Pin Fin LED Cooler ø47mm

Mounting Instruction



Zhaga Book 3 Spot Light Modules

LED COB's for which Zhaga book 3 LED holders are available

- Bridgelux V18, Vesta Tunable White & Dim-To-Warm 9mm
- Citizen CitiLED CLU036 - CLU038
- Edison Opto HM16
- Lextar Nimbus 2000, 3000, 5000
- LG Innotek LEMWM18 (10W, 13W, 17W, 24W)
- Nichia NFCWL036-048B
- Osram Soleriq S13, S19
- Lumileds Luxeon 1203, 1204
- Lumiuuns CXM-11 (ACxx), CLM-14 (ACxx), CXM-14 (ACxx)
- Samsung LC026, LC040
- Seoul Semiconductor ZC12, ZC18
- Sharp Mega Zenigata
- Tridonic TALEXXmodule SLE Gen5 15mm

Mounting

- Direct mounting with 2 M3 screws
- Green indicator marks

Reflector ring Mounting

- This optional ring can be mounted on top of the Edison Opto EdiLex spot light module and provides in this way an easy plug-and-play attachment of various reflectors.
- Mounting with 3 screws M3 x 8mm
- Red indicator marks

Zhaga Book 11 Spot Light Modules

Zhaga Interface Specification Book 11 defines the interfaces of LED light engines (LLEs) comprising a circular, non-socketable LED module with a separate LED driver (electronic control gear). The LED modules in Book 11 have an overall diameter of 35 mm and a height of 3.5 mm. Zhaga Book 11 LED modules are mounted by 2 M3 screws evenly located on diameter of 25mm on the LED cooler. There are three LLE categories in Book 11, which are defined by the maximum diameter of the circular light-emitting surface (LES): 6.3 mm, 9.0 mm, 13.5 mm. Book 11 LLEs are suitable for spot-lighting and other applications that benefit from a small, circular source.

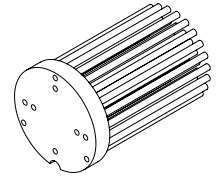


LED COB's for which Zhaga book 11 LED holders are available

- Bridgelux V10 / V13
- Citizen CitiLED CLU026 - CLU028, CLU700
- Cree XLamp CXA / CXB 13xx, 15xx
- Edison Opto HM05, HM09, HM13
- Lextar Nimbus 1500
- Osram Soleriq S13
- Prolight Opto PACE
- Seoul Semiconductor ZC6
- Sharp Mini Zenigata
- Tridonic TALEXXmodule SLE GEN1 11mm, SLE GEN5 06/11/15mm, SLE GEN6 10/15mm

Mounting

- Direct mounting with 2 M3 screws
- Orange indicator marks



LPF4768-ZHP Bridgelux Pin Fin LED Cooler ø47mm

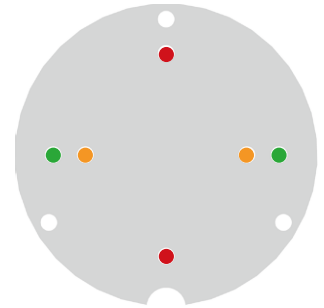
Mounting Instruction



Bridgelux is a leading provider of high power, cost effective and energy efficient light emitting diode (LED) solutions. Leveraging patented light source technology, Bridgelux LED Arrays replace traditional technologies (such as incandescent, halogen, fluorescent and high intensity discharge lighting) with integrated solid state light sources enabling high performance and energy-efficient products for the general lighting market.

Mounting indicator marks overview

MechaTronix recommends the use of a high thermal conductive interface between the LED module and the LED cooler. Either thermal grease, a thermal pad or a phase change thermal pad thickness 0.1-0.15mm is recommended. Thermal pads or phase change thermal pads can be pre-applied from MechaTronix.



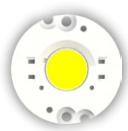
Bridgelux Gen7 Vero 13 & Décor Vero 13 / Vero 18 & Décor Vero 18 LED Array

Model names

- BXRC-xxx200x-x-7x
- BXRC-xxx400x-x-7x

Mounting

- Direct mounting with 2 screws M3 x 6mm
- Red indicator marks



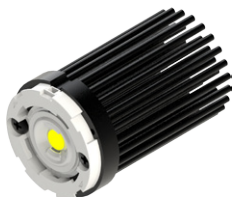
Bridgelux Vero SE 13 - 18 / Décor Vero SE 13 - 18 LED Array

Model names

- BXRC-xxx200x-x-7x-SE
- BXRC-xxx400x-x-7x-SE

Mounting

- Direct mounting with 2 screws M3 x 6mm
- Red indicator marks



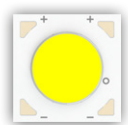
Bridgelux Gen 7 V series V8 LED Array

Model names

- BXRE-xxx080x-x-7x

Mounting

- With Zhaga Book 3 LED holder
- Ledil HEKLA solderless connector FP15490_HEKLA-A
- Green indicator marks



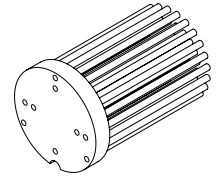
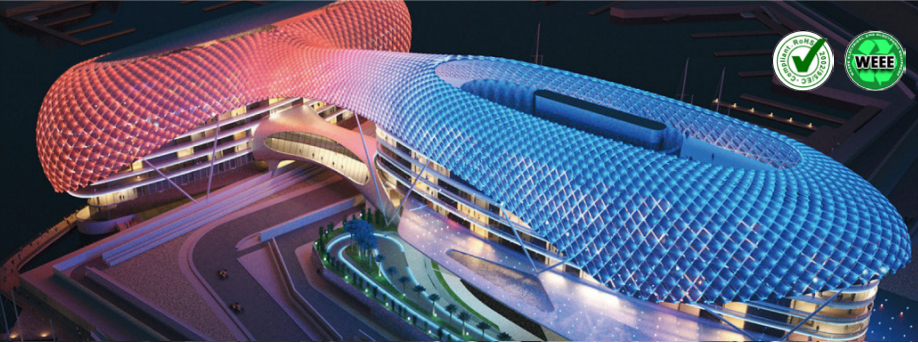
Bridgelux Gen 7 V series V10 LED Array

Model names

- BXRE-xxx100x-x-7x

Mounting

- With Zhaga Book 11 LED holder
- BJB spotlight connector 47.319.6060
- Ideal Industries Chip-Lok™ holder 50-2002CT
- Mounting with 2 screws M3 x 6mm
- Orange indicator marks
- With Zhaga Book 3 LED holder
- Ledil HEKLA solderless connector FP15501_HEKLA-C
- Mounting with 2 screws M3 x 6mm
- Green indicator marks



LPF4768-ZHP Bridgelux Pin Fin LED Cooler ø47mm

Mounting Instruction

Bridgelux Gen 7 V series V13 LED Array

Model names

- BXRE-xxx200x-x-7x

Mounting

- With Zhaga Book 11 LED holder
BJB spotlight connector 47.319.6024
Mounting with 2 screws M3 x 6mm
Orange indicator marks
- With Zhaga Book 3 LED holder
BJB spotlight connector 47.319.2025
Ideal Industries Chip-Lok™ holder 50-2103CT
Ledil HEKLA solderless connector FP15949_HEKLA-I
Mounting with 2 screws M3 x 6mm
Green indicator marks



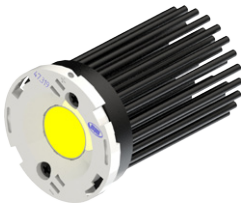
Bridgelux Gen7 V series V 18 LED Array

Model names

- BXRE-xxx400x-x-7x

Mounting

- With Zhaga Book 3 LED holder
BJB spotlight connector 47.319.2350
Mounting with 2 screws M3 x 6mm
Green indicator marks



Bridgelux Gen 7 V series V4 HD LED Array

Model names

- BXRH-xxx060x-A-73

Mounting

- With Zhaga Book 3 LED holder
Ledil HEKLA solderless connector FP15490_HEKLA-A
Mounting with 2 screws M3 x 6mm
Green indicator marks



Bridgelux Gen 7 V series V6 HD LED Array

Model names

- BXRH-xxx100x-B-73

Mounting

- With Zhaga Book 11 LED holder
Bender+Wirth 464 Typ 1
Mounting with 2 screws M3 x 6mm
Orange indicator marks



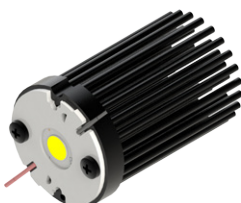
Bridgelux Gen 7 V series V9 HD LED Array

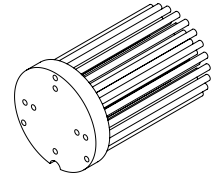
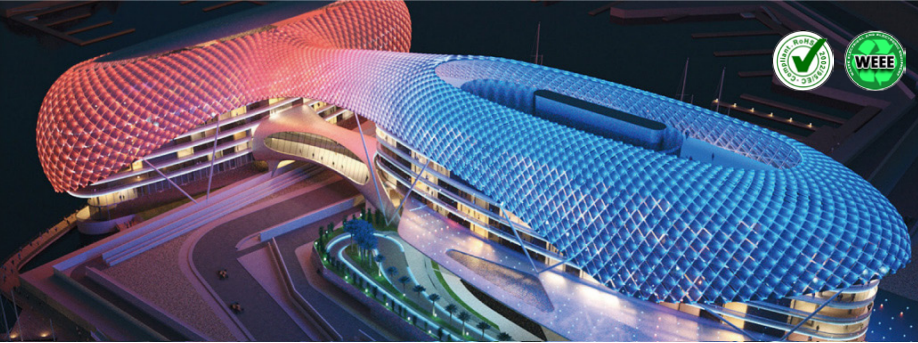
Model names

- BXRH-xxx300x-D-73

Mounting

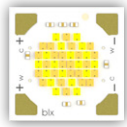
- With Zhaga Book 11 LED holder
Bender+Wirth 496 Typ Z1
Mounting with 2 screws M3 x 6mm
Orange indicator marks





LPF4768-ZHP Bridgelux Pin Fin LED Cooler ø47mm

Mounting Instruction



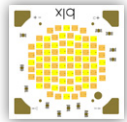
Bridgelux Vesta series Tunable White 9mm LED Array

Model names

- BXRV-TR-xxxxG-1000-A-15

Mounting

- With Zhaga Book 3 LED holder
 BJB spotlight connector 47.319.2360
 Bender+Wirth LED holder 489 Typ L8
 Mounting with 2 screws M3 x 6mm
 Green indicator marks



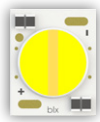
Bridgelux Vesta series Tunable White 13mm LED Array

Model names

- BXRV-TR-xxxxG-2000-A-15

Mounting

- With Zhaga Book 3 LED holder
 BJB spotlight connector 47.319.2370
 Bender+Wirth LED holder 492 type L8
 Mounting with 2 screws M3 x 6mm
 Green indicator marks



Bridgelux Vesta series Dim-To-Warm 9mm LED Array

Model names

- BXRV-DR-xxx-1000-x-13

Mounting

- With Zhaga Book 3 LED holder
 Bender+Wirth LED holder 490 Typ L8
 Mounting with 2 screws M3 x 6mm
 Green indicator marks
- With Zhaga Book 11 LED holder
 BJB spotlight connector 47.319.6380
 Mounting with 2 screws M3 x 6mm
 Orange indicator marks