

LPF3550-ZHC Prolight Opto Pin Fin LED Cooler ϕ 35mm

Features & Benefits

- The LPF3550-ZHC Zhaga Pin Fin LED cooler is specifically designed for luminaires using the Prolight Opto LED COB. Mechanical compatibility with direct mounting of the LED modules to the LED cooler and thermal performance matching the lumen packages.
- For spot and downlight designs from 700 to 1,300 lumen
- Thermal resistance Rth 7.41°C/W
- Modular design with mounting holes foreseen for Prolight Opto PACE LED COB, direct mounting or by LED holder.
- Diameter 35mm - Height 50mm
Other heights on request
- Better performance under tilted position
- Forged from highly conductive aluminum



Order Information



Example : LPF3550-ZHC-B

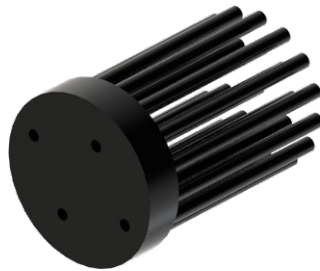
LPF3550-ZHC- **1**

- 1** Anodising Color
- B - Black
 - C - Clear
 - Z - Custom (specify)

Simple mounting with M3 screws
Screws are available from MechaTronix

LPF3550-ZHC Pin Fin LED Cooler ø35mm

Product Details



Model n°

LPF3550-ZHC

Dimension (mm) ^{*1}	ø35 x h50
Volume (mm ³)	14579
Cooling Surface (mm ²)	12655
Weight (gr)	39
Thermal Resistance (°C/W) ^{*2}	7.41
Power Pd (W) ^{*3}	6.8
Heat Sink Material	AL1070

^{*1} 3D files are available in ParaSolid, STP and IGS on request

^{*2} The thermal resistance Rth is determined with a calibrated heat source of 30mm x 30mm central placed on the heat sink, Tamb 40° and an open environment. Reference data @ heat sink to ambient temperature rise Ths-amb 50°C
The thermal resistance of a LED cooler is not a fix value and will vary with the applied dissipated power Pd

^{*3} Dissipated power Pd. Reference data @ heat sink to ambient temperature rise Ths-amb 50°C
The maximal dissipated power needs to be verified in function of required case temperature Tc or junction temperature Tj and related to the estimated ambient temperature where the light fixture will be placed
Please be aware the dissipated power Pd is not the same as the electrical power Pe of a LED module

To calculate the dissipated power please use the following formula: $Pd = Pe \times (1 - \eta_L)$

Pd - Dissipated power

Pe - Electrical power

η_L = Light efficiency of the LED module

Notes:

- MechaTronix reserves the right to change products or specifications without prior notice.
- Mentioned models are an extraction of full product range.
- For specific mechanical adaptations please contact MechaTronix.