

## LPF3550-ZHC Cree XLamp Pin Fin LED Cooler ø35mm

### Mounting Instruction

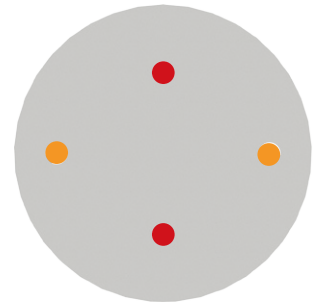


Cree XLamp® LEDs deliver the industry's best lighting-class performance and are application-optimized to enable the lowest system cost.

Cree's new CXA LED Arrays deliver high lumen output and efficacy in a family of single, easy-to-use components. Optimized to simplify designs and lower system cost, Cree's CXA LED arrays are available in system level performance from 300 to over 16,000 lumens and can enable applications ranging from GU10s and commercial downlights to outdoor area lighting and high-bay lighting.

#### Mounting indicator marks overview

MechaTronix recommends the use of a high thermal conductive interface between the LED module and the LED cooler. Either thermal grease, a thermal pad or a phase change thermal pad thickness 0.1-0.15mm is recommended. Thermal pads or phase change thermal pads can be pre-applied from MechaTronix.



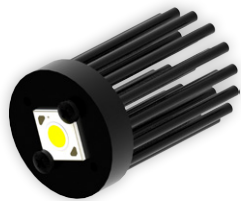
#### Cree XLamp CXA13 / CXB13 LED Array

##### Model names

- CXA1304-xxxx
- CXB1304-xxxx

##### Mounting

- With Zhaga Book 11 LED holder  
 BJB Spotlight connector 47.319.6120  
 Ideal Industries Chip-Lok™ holder 50-2000CR  
 Mounting with 2 screws M3 x 6mm  
 Orange indicator marks



#### Cree XLamp CMA13 LED Array

##### Model names

- CMA1303-xxxx

##### Mounting

- Direct mounting with 2 screws M3 x 6mm  
 Red indicator marks



#### Cree XLamp CMT14 LED Array

##### Model names

- CMT1407-xxxx

##### Mounting

- Direct mounting with 2 screws M3 x 6mm  
 Red indicator marks
- With Zhaga Book 11 LED holder  
 TE Connectivity Lumawise type Z35 2213678  
 Mounting with 2 screws M3 x 6mm  
 Orange indicator marks