

LPF3550-ZHC Bridgelux Pin Fin LED Cooler ø35mm

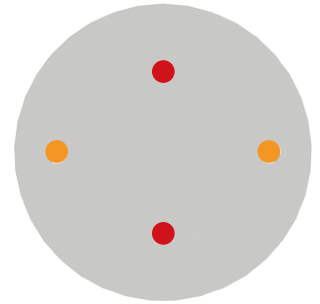
Mounting Instruction



Bridgelux is a leading provider of high power, cost effective and energy efficient light emitting diode (LED) solutions. Leveraging patented light source technology, Bridgelux LED Arrays replace traditional technologies (such as incandescent, halogen, fluorescent and high intensity discharge lighting) with integrated solid state light sources enabling high performance and energy-efficient products for the general lighting market.

Mounting indicator marks overview

MechaTronix recommends the use of a high thermal conductive interface between the LED module and the LED cooler. Either thermal grease, a thermal pad or a phase change thermal pad thickness 0.1-0.15mm is recommended. Thermal pads or phase change thermal pads can be pre-applied from MechaTronix.



Bridgelux Gen7 Vero 10 & Décor Vero 10 LED Array

Model names

- BXRC-xxx100x-x-7x

Mounting

- Direct mounting with 2 screws M3 x 6mm
- Red indicator marks



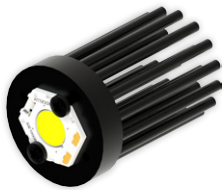
Bridgelux Vero SE 10 & Décor Vero SE 10 LED Array

Model names

- BXRC-xxx100x-x-7x-SE

Mounting

- Direct mounting with 2 screws M3 x 6mm
- Red indicator marks



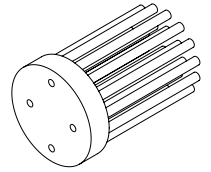
Bridgelux Gen7 V series V 10 LED Array

Model names

- BXRE-xxx100x-x-7x

Mounting

- With Zhaga Book 11 LED holder
- BJB spotlight connector 47.319.6060
- Ideal 50-2002CT
- Ledil FP15501_HEKLA-C
- Mounting with 2 screws M3 x 6mm
- Orange indicator marks
- Direct mounting with 2 screws M3 x 6mm
- Red indicator marks



LPF3550-ZHC Bridgelux Pin Fin LED Cooler ø35mm

Mounting Instruction



Bridgelux Gen 7 V series V13 LED Array

Model names

- BXRE-xxx200x-x-7x

Mounting

- With Zhaga Book 11 LED holder
BJB spotlight connector 47.319.6024
BJB spotlight connector 47.319.2025
Ideal Industries Chip-Lok™ holder 50-2103CT
Ledil HEKLA solderless connector FP15949_HEKLA-I
mounting with 2 screws M3 x 6mm
Orange indicator marks



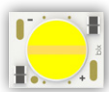
Bridgelux Gen 7 V series V6 HD LED Array

Model names

- BXRH-xxx100x-B-73

Mounting

- With Zhaga Book 11 LED holder
Bender+Wirth 464 Typ 1
mounting with 2 screws M3 x 6mm
Orange indicator marks
- Direct mounting with 2 screws M3 x 6mm
Red indicator marks



Bridgelux Vesta Series Dim-To-Warm 9mm LED Array

Model names

- BXRV-DR-xxx-1000-x-13

Mounting

- With Zhaga Book 11 LED holder
BJB spotlight connector 47.319.6380
Bender+Wirth 490 Typ L8
mounting with 2 screws M3 x 6mm
Orange indicator marks