

## LPF1180-ZHE Tridonic Talexx Pin Fin LED Cooler ø111mm

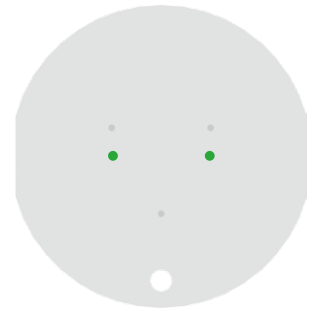
### Mounting Instruction

## TRIDONIC

With the TALEXX LED products Tridonic gives you the confidence that your chosen lighting solution will give you precisely the results you want. Thanks to Tridonic's many years of experience in product development they have been able to raise the quality of light from their LEDs to new levels. The production series have an exceptionally constant light color so they guarantee a uniform and crystal clear color appearance. In addition to high efficiency and balanced distribution of light Tridonic offers you impressive robustness in the latest generation of their products and the resultant long life will save you maintenance and repair costs.

### Mounting indicator marks overview

MechaTronix recommends the use of a high thermal conductive interface between the LED module and the LED cooler. Either thermal grease, a thermal pad or a phase change thermal pad thickness 0.1-0.15mm is recommended. Thermal pads or phase change thermal pads can be pre-applied from MechaTronix.



### TALEXXmodule SLE GEN5 15mm Excite / Advanced



#### Model names

- SLE G5 15mm 2000lm xxx x EXC/ADV
- SLE G5 15mm 3000lm xxx x EXC/ADV
- SLE G5 15mm 4000lm xxx x EXC/ADV
- SLE G5 15mm 5000lm xxx x EXC/ADV

#### Mounting

- With Zhaga Book 3 LED holder  
BJB Spotlight connector 47.319.2021  
Ideal Industries Chip-Lok™ holder 50-2103CT  
TE Connectivity Lumawise type Z50 2213254-1  
TE Connectivity Lumawise type Z50 2213254-2  
Mounting with 2 screws M3 x 8mm  
Green indicator marks

### TALEXXmodule SLE GEN5 19mm - 23mm Excite / Advanced



#### Model names

- SLE G5 19mm 5000lm xxx x EXC/ADV
- SLE G5 23mm 6000lm xxx x EXC/ADV

#### Mounting

- Direct mounting with 2 screws M3 x 8mm  
Green indicator marks

### TALEXX STARK SLE GEN6 15mm D50 Advanced

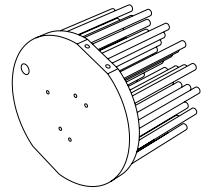


#### Model names

- SLE G6 15mm 3000lm XXX H ADV D50

#### Mounting

- Direct mounting with 2 screws M3 x 6mm  
Green indicator marks



## LPF1180-ZHE Tridonic Talexx Pin Fin LED Cooler ø111mm

### Mounting Instruction



#### TALEXX STARK SLE GEN6 17mm D50 Advanced

##### Model names

- SLE G6 17mm 4000lm XXX H ADV D50

##### Mounting

- Direct mounting with 2 screws M3 x 6mm  
Green indicator marks



#### TALEXX STARK SLE GEN6 19mm Advanced

##### Model names

- SLE G6 19mm 5000lm XXX X ADV

##### Mounting

- Direct mounting with 2 screws M3 x 6mm  
Green indicator marks



#### TALEXX STARK SLE GEN6 23mm Advanced

##### Model names

- SLE G6 23mm 6000lm XXX X ADV

##### Mounting

- Direct mounting with 2 screws M3 x 6mm  
Green indicator marks



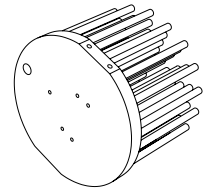
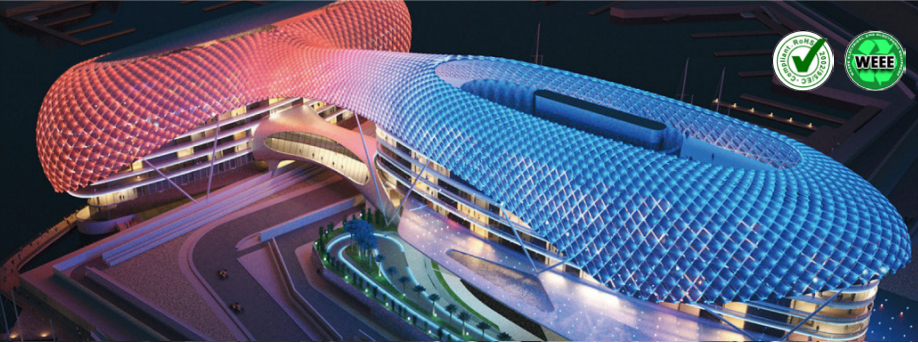
#### TALEXX STARK SLE G6 19mm FOOD EXC

##### Model names

- SLE G6 19mm 5000lm XXXX C EXC
- SLE G6 19mm 5000lm XXXX H EXC

##### Mounting

- Direct mounting with 2 screws M3 x 6mm  
Green indicator marks



## LPF1180-ZHE Tridonic Talexx Pin Fin LED Cooler ø111mm

### Mounting Instruction



#### TALEXX STARK SLE G6 23mm FOOD EXC

##### Model names

- SLE G6 23mm 6000lm XXX C EXC
- SLE G6 23mm 6000lm XXX H EXC

##### Mounting

- Direct mounting with 2 screws M3 x 6mm
- Green indicator marks



#### TALEXX STARK SLE G6 19mm FASHION EXC

##### Model names

- SLE G6 19mm 5000lm FASHION C EXC
- SLE G6 19mm 5000lm FASHION H EXC

##### Mounting

- Direct mounting with 2 screws M3 x 6mm
- Green indicator marks



#### TALEXX STARK SLE G6 23mm FASHION EXC

##### Model names

- SLE G6 23mm 6000lm FASHION H EXC

##### Mounting

- Direct mounting with 2 screws M3 x 6mm
- Green indicator marks



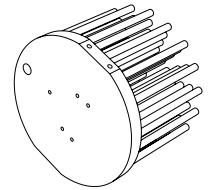
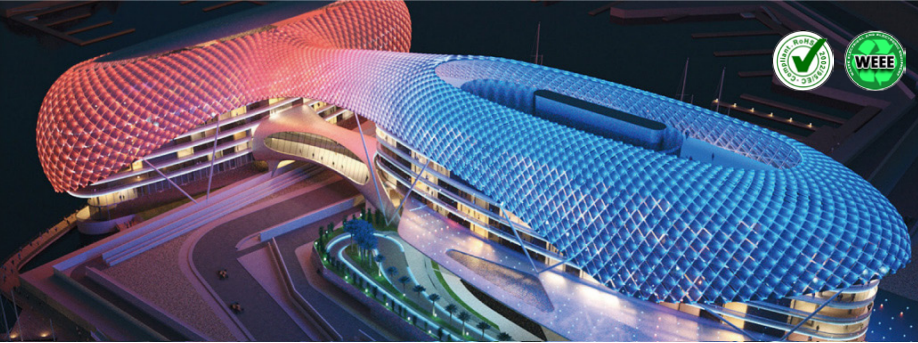
#### TALEXX STARK SLE G6 19mm ART EXC

##### Model names

- SLE G6 19mm 5000lm ART H EXC

##### Mounting

- Direct mounting with 2 screws M3 x 6mm
- Green indicator marks



## LPF1180-ZHE Tridonic Talexx Pin Fin LED Cooler ø111mm

### Mounting Instruction



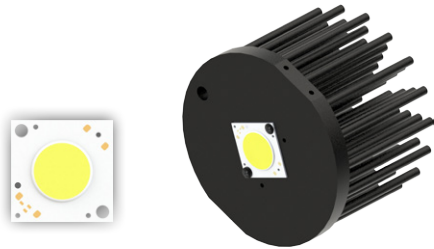
#### TALEXX STARK SLE G6 23mm ART EXC

##### Model names

- SLE G6 23mm 6000lm ART H EXC

##### Mounting

- Direct mounting with 2 screws M3 x 6mm  
Green indicator marks



#### Module SLE G7 ADV 21mm

##### Model names

- SLE G7 21mm 6000lm xxx x ADV

##### Mounting

- Direct mounting with 2 screws M3 x 6mm  
Green indicator marks



#### Module SLE G7 ADV 21mm

##### Model names

- SLE G7 21mm 6000lm xxx H ADV x

##### Mounting

- Direct mounting with 2 screws M3 x 6mm  
Green indicator marks