

ø111 - H80 (mm)
 Rth 1.07 °C/W - Power Pd 50W
MORE PRODUCT DETAILS

LPF1180-ZHE Nichia Pin Fin LED Cooler ø111mm

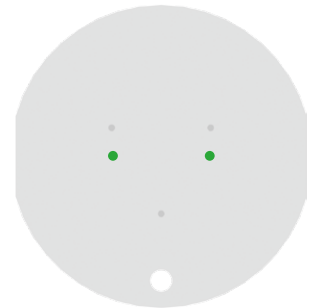
Mounting Instruction



Nichia places a high value on environmental responsibility. Under this unified corporate philosophy, all Nichia group members are striving for monotsukuri, for superior performance, extended life and ever-increasing reliability. Nichia has also grown in the field of development, manufacturing and sales of fine chemicals, particularly inorganic luminescent materials (phosphors). The invention of these Nitride-based LED and laser diodes causes the technological innovation of light source in the field of display, general lighting, automotive, industrial equipment, and medical care & measurement.

Mounting indicator marks overview

MechaTronix recommends the use of a high thermal conductive interface between the LED module and the LED cooler. Either thermal grease, a thermal pad or a phase change thermal pad thickness 0.1-0.15mm is recommended. Thermal pads or phase change thermal pads can be pre-applied from MechaTronix.



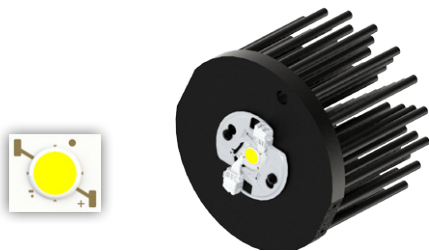
Nichia Standard COB 084B - 096B - 108B - 120B - 130B

Model names

- NFCWD084B
- NFCWD096B
- NFCWJ108B
- NFCWJ120B
- NFDWJ130B

Mounting

- With Zhaga Book 3 LED holder
- Ideal Industries Chip-Lok™ holder 50-2103NC
- Mounting with 2 screws M3 x 6mm
- Green indicator marks



High Luminous Density COB 016Z - 024Z

Model names

- NVEWL016Z
- NVCWL024Z

Mounting

- With Zhaga Book 3 LED holder
- Ideal Industries Chip-Lok™ holder 50-2100NC
- Ledil HEKLA solderless connector FP15948_HEKLA-H
- Molex LED Array Holders 180580-0004
- Molex LED Array Holders 180580-0005
- TE Connectivity Lumawise type Z50 2213382
- Mounting with 2 screws M3 x 6mm
- Green indicator marks