

LPF1180-ZHE Luminus Pin Fin LED Cooler ø111mm

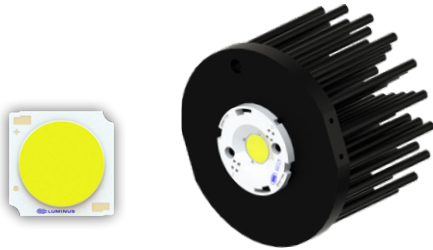
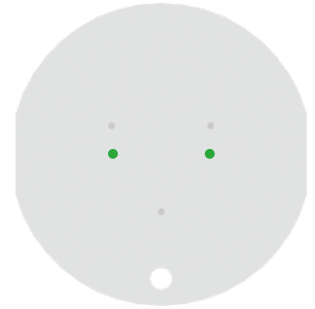
Mounting Instruction



Patented, high performance Luminus LEDs are the brightest and most versatile solid state light sources available today, redefining the solid state lighting landscape by enabling the adoption of LED technology into emerging markets. Luminus technology is used in commercial and industrial lighting fixtures, theatrical lighting, projectors, signs, medical equipment, UV curing... just about anywhere a bright, efficient, reliable, long-life light source is needed.

Mounting indicator marks overview

MechaTronix recommends the use of a high thermal conductive interface between the LED module and the LED cooler. Either thermal grease, a thermal pad or a phase change thermal pad thickness 0.1-0.15mm is recommended. Thermal pads or phase change thermal pads can be pre-applied from MechaTronix.



Luminus Gen 4 COB Array

Model names

- CIM-14
- CLM-14
- CXM-14 (AC)
- CGM-14

Mounting

- With Zhaga Book 3 LED holder
- BJB spotlight connector 47.319.2021
- Bender+Wirth 633a
- TE Connectivity Lumawise type Z50 2213254
- Mounting with 2 screws M3 x 6mm
- Green indicator marks



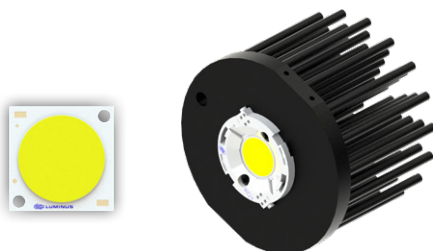
Luminus Gen 4 COB Array

Model names

- CXM-18

Mounting

- With Zhaga Book 3 LED holder
- BJB spotlight connector 47.319.2281
- Mounting with 2 screws M3 x 6mm
- Green indicator marks



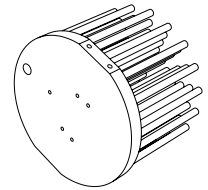
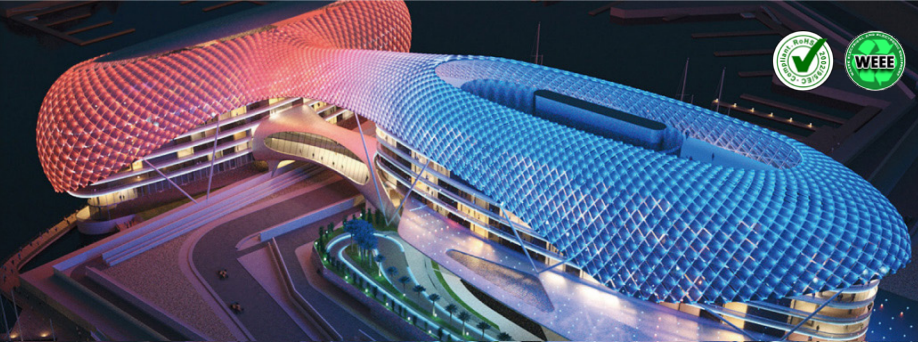
Luminus Gen 4 COB Array

Model names

- CIM-22
- CLM-22
- CXM-22

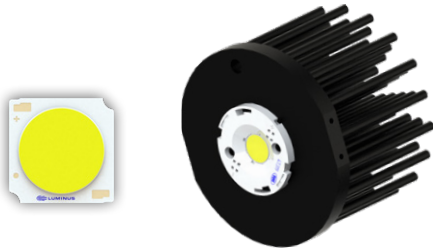
Mounting

- With Zhaga Book 3 LED holder
- BJB spotlight connector 47.319.2033
- Bender+Wirth 631a
- Mounting with 2 screws M3 x 6mm
- Green indicator marks



LPF1180-ZHE Luminus Pin Fin LED Cooler ø111mm

Mounting Instruction



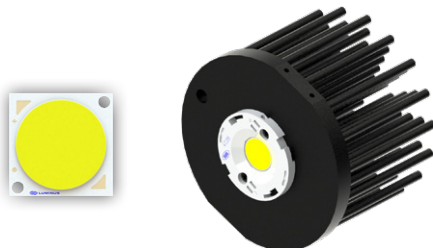
Luminus Gen 3 COB Array

Model names

- CXM-14 (AC)

Mounting

- With Zhaga Book 3 LED holder
BJB spotlight connector 47.319.2021
Bender+Wirth 633a
TE Connectivity Lumawise type Z50 2213254
Mounting with 2 screws M3 x 6mm
Green indicator marks



Luminus Gen 3 COB Array

Model names

- CXM-18 (AA)

Mounting

- With Zhaga Book 3 LED holder
BJB spotlight connector 47.319.2281
Mounting with 2 screws M3 x 6mm
Green indicator marks



Luminus Gen 3 COB Array

Model names

- CLM-22 (AC)
- CXM-22 (AC)

Mounting

- With Zhaga Book 3 LED holder
BJB spotlight connector 47.319.2033
Bender+Wirth 631a
Mounting with 2 screws M3 x 6mm
Green indicator marks