

LPF1180-ZHE Edison Opto Pin Fin LED Cooler ø111mm

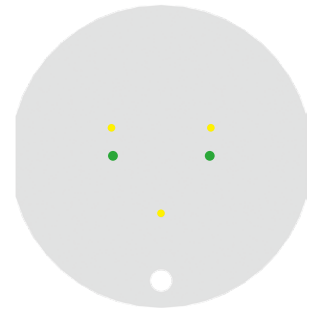
Mounting Instruction



Edison Opto with headquarters in Chung-Ho Dist, New Taipei City, Taiwan is a professional LED manufacture with specializes in designing and producing High-power LEDs, solid state lighting applications, LED sensors and SPDIFs. In response to rapid growth of capacity demand, Edison Opto has established factories in Dongguan and Yangzhou China and subsidiaries in USA and Germany. Edison Opto COB LED modules outstand in light quality and are available in the broadest lumen and CRI range available on the market.

Mounting indicator marks overview

MechaTronix recommends the use of a high thermal conductive interface between the LED module and the LED cooler. Either thermal grease, a thermal pad or a phase change thermal pad thickness 0.1-0.15mm is recommended. Thermal pads or phase change thermal pads can be pre-applied from MechaTronix.



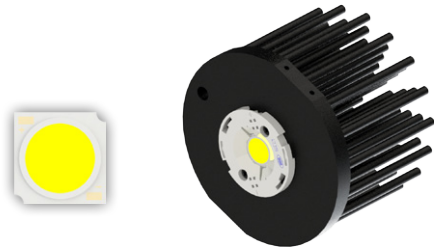
Edison Opto EdiPower III HM series

Model Names 16W - 30W

- 2PHM16xxxx
- 2PHM24xxxx
- 2PHM30xxxx

Mounting

- With Zhaga Book 3 LED holder
- BJB Spotlight connector 47.319.2021
- Ideal Industries Chip-Lok™ holder 50-2103CT
- TE Connectivity Lumawise type Z50 2213254-1
- TE Connectivity Lumawise type Z50 2213254-2
- Mounting with 2 screws M3 x 6mm
- Green indicator marks

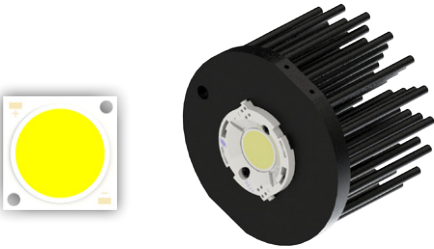


Model Names 40W

- 2PHM40xxxx

Mounting

- With Zhaga Book 3 LED holder
- BJB Spotlight connector 47.319.2033
- Ideal Industries Chip-Lok™ holder 50-2204CT
- Mounting with 2 screws M3 x 6mm
- Green indicator marks



Edison Opto EdiLex Spot Light Module (SLM)

Model names

- 5PHR09xxxx
- 5PHR11xxxx
- 5PHR22xxxx
- 5PHV35xxxx

Mounting

- Direct mounting with 2 screws M3 x 8mm
- Green indicator marks

Reflector ring Mounting

- This optional ring can be mounted on top of the Edison Opto EdiLex spot light module and provides in this way an easy plug-and-play attachment of various reflectors.
- Mounting with 3 screws M3 x 10mm
- Yellow indicator marks

