

LPF1180-ZHE Bridgelux Pin Fin LED Cooler ø111mm

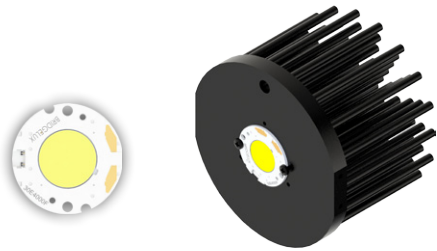
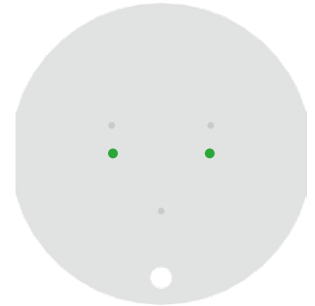
Mounting Instruction



Bridgelux is a leading provider of high power, cost effective and energy efficient light emitting diode (LED) solutions. Leveraging patented light source technology, Bridgelux LED Arrays replace traditional technologies (such as incandescent, halogen, fluorescent and high intensity discharge lighting) with integrated solid state light sources enabling high performance and energy-efficient products for the general lighting market.

Mounting indicator marks overview

MechaTronix recommends the use of a high thermal conductive interface between the LED module and the LED cooler. Either thermal grease, a thermal pad or a phase change thermal pad thickness 0.1-0.15mm is recommended. Thermal pads or phase change thermal pads can be pre-applied from MechaTronix.



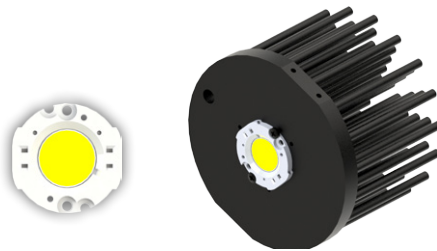
Bridgelux Gen 7 Vero 18 / Décor Vero 18 LED Array

Model names

- BXRC-xxx400x-x-7x

Mounting

- Direct mounting with 2 screws M3 x 6mm
 Green indicator marks



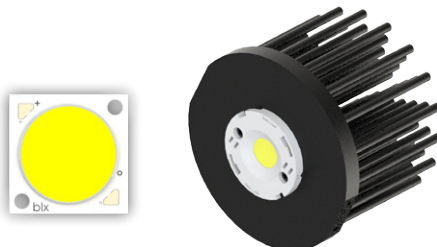
Bridgelux Vero SE 18 & Décor Vero SE 18 LED Array

Model names

- BXRC-xxx400x-x-7x-SE

Mounting

- Direct mounting with 2 screws M3 x 6mm
 Green indicator marks



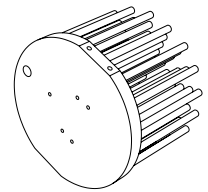
Bridgelux Gen 7 V series V18 LED Array

Model names

- BXRE-xxx400x-x-7x

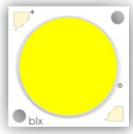
Mounting

- With Zhaga Book 3 LED holder
 BJB spotlight connector 47.319.2350
 Mounting with 2 screws M3 x 6mm
 Green indicator marks



LPF11180-ZHE Bridgelux Pin Fin LED Cooler ø111mm

Mounting Instruction



Bridgelux Gen 7 V series V22 LED Array

Model names

- BXRE->xx650x-x-7x

Mounting

- With Zhaga Book 3 LED holder
BJB spotlight connector 47.319.2030
Ideal Industries Chip-Lok™ holder 50-2204CT
Bender+Wirth 431 Typ 2
Mounting with 2 screws M3 x 6mm
Green indicator marks