

## ModuLED Xtra | Tridonic Talexx Modular Passive Star LED Cooler ø99mm

### Mounting Instruction

# TRIDONIC

With the TALEXX LED products Tridonic gives you the confidence that your chosen lighting solution will give you precisely the results you want. Thanks to Tridonic's many years of experience in product development they have been able to raise the quality of light from their LEDs to new levels. The production series have an exceptionally constant light color so they guarantee a uniform and crystal clear color appearance. In addition to high efficiency and balanced distribution of light Tridonic offers you impressive robustness in the latest generation of their products and the resultant long life will save you maintenance and repair costs.

### Mounting indicator marks overview

MechaTronix recommends the use of a high thermal conductive interface between the LED module and the LED cooler. Either thermal grease, a thermal pad or a phase change thermal pad thickness 0.1-0.15mm is recommended. Thermal pads or phase change thermal pads can be pre-applied from MechaTronix.



### Module SLE G7 ADV 15mm

#### Model names

- SLE G7 15mm 4000lm xxx x ADV

#### Mounting

- With Zhaga Book 11 LED holder  
BJB spotlight connector 47.319.6024  
BJB spotlight connector 47.360.1010  
Mounting with 2 self tapping screws M3 x 6mm  
Orange indicator marks
- With Zhaga Book 3 LED holder  
BJB spotlight connector 47.319.2021  
BJB spotlight connector 47.319.2025  
Ledil HEKLA solderless connector FP15949\_HEKLA-I  
Mounting with 2 self tapping screws M3 x 6mm  
Green indicator marks



### Module SLE G7 ADV 15mm

#### Model names

- SLE G7 15mm 4000lm xxx H ADV x

#### Mounting

- Direct mounting with 2 self tapping screws M3 x 8mm  
Green indicator marks



### Module SLE G7 ADV 17mm

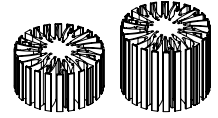
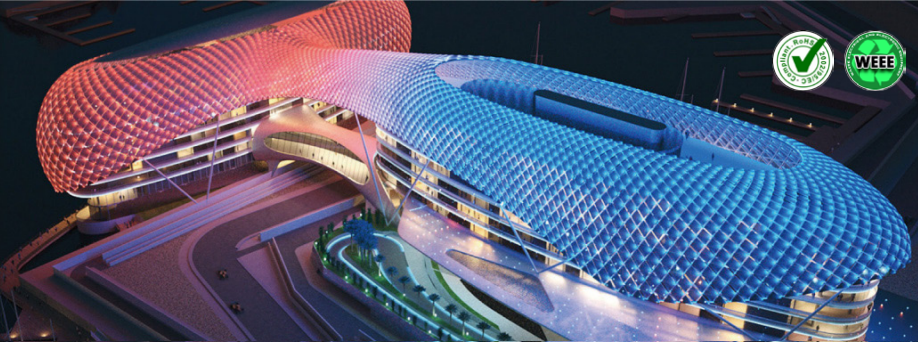
#### Model names

- SLE G7 17mm 5000lm xxx x ADV

#### Mounting

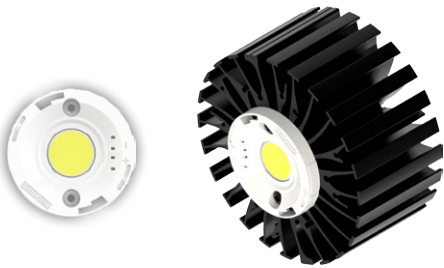
- Direct mounting with 2 self tapping screws M3 x 8mm  
Green indicator marks





## ModuLED Xtra | Tridonic Talexx Modular Passive Star LED Cooler ø99mm

### Mounting Instruction



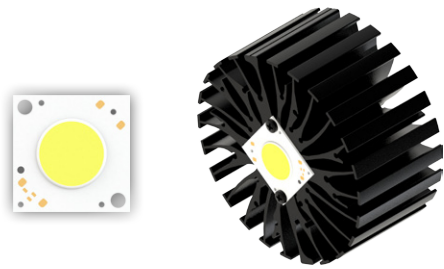
#### Module SLE G7 ADV 17mm

##### Model names

- SLE G7 17mm 5000lm xxx H ADV x

##### Mounting

- Direct mounting with 2 self tapping screws M3 x 8mm  
 Green indicator marks



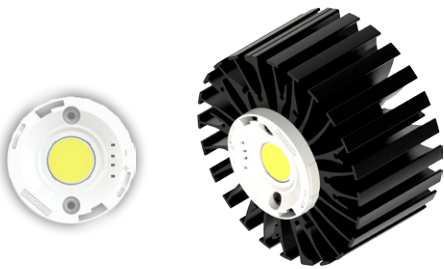
#### Module SLE G7 ADV 21mm

##### Model names

- SLE G7 21mm 6000lm xxx x ADV

##### Mounting

- Direct mounting with 2 self tapping screws M3 x 8mm  
 Green indicator marks



#### Module SLE G7 ADV 21mm

##### Model names

- SLE G7 21mm 6000lm xxx H ADV x

##### Mounting

- Direct mounting with 2 self tapping screws M3 x 8mm  
 Green indicator marks