

## ModuLED Xtra | Philips Fortimo Modular Passive Star LED Cooler ø99mm

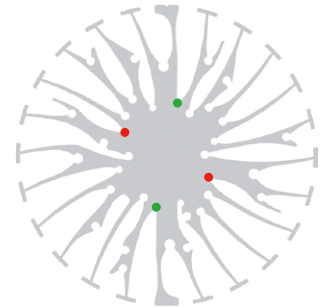
### Mounting Instruction

# PHILIPS

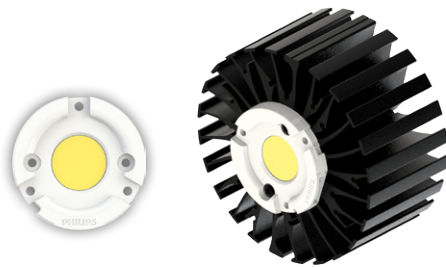
The third Philips Fortimo LED SLM generation is the ideal solution for spot lighting fixtures and highly efficient compact down light luminaires. It is specifically designed for the retail market showcasing retail merchandise in bright and vivid light. This generation is equipped with new Chip-On-Board (COB) LED technology. This technology enables the creation of the most efficient point source Philips LED system available.

#### Mounting indicator marks overview

MechaTronix recommends the use of a high thermal conductive interface between the LED module and the LED cooler. Either thermal grease, a thermal pad or a phase change thermal pad thickness 0.1-0.15mm is recommended. Thermal pads or phase change thermal pads can be pre-applied from MechaTronix.



### Philips Fortimo SLM Gen 4 / Crisp White Spotlight Modules



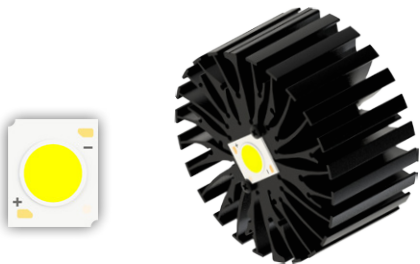
#### Model names

- Fortimo LED SLM 2000lm xxx L13 G4
- Fortimo LED SLM 2000lm 930 CW L13 G4
- Fortimo LED SLM 3000lm xxx L15 G4
- Fortimo LED SLM 3000lm 930 CW L15 G4
- Fortimo LED SLM 4500lm xxx L19 G4
- Fortimo LED SLM 3800lm 930 CW L19 G4

#### Mounting

- Direct mounting with 2 self tapping screws M3 x 6mm  
Green indicator marks

### Philips Fortimo SLM 1205 - 1208 Gen 6 / Premium White / Crisp White / Food application Spotlight Modules

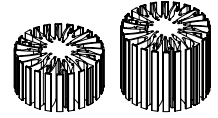


#### Model names

- Fortimo SLM C xxx xxx 1205 L13 2024 G6
- Fortimo SLM C xxx xxx 1208 L15 2024 G6

#### Mounting

- Direct mounting with 2 self tapping screws M3 x 6mm  
Red indicator marks
- With Zhaga Book 3 LED holder  
Philips Fortimo SLM H xx 2024 G1  
Mounting with 2 self tapping screws M3 x 8mm  
Green indicator marks



## ModuLED Xtra | Philips Fortimo Modular Passive Star LED Cooler ø99mm

### Mounting Instruction



### Philips Fortimo SLM 1211 - 1216 Gen 6 / Premium White / Crisp White / Food application Spotlight Modules

#### Model names

- Fortimo SLM C xxx xxx 1211  
L19 2828 G6
- Fortimo SLM C xxx xxx 1216  
L23 2828 G6

#### Mounting

- With Zhaga Book 3 LED holder  
Philips Fortimo SLM H xx 2828 G1  
Mounting with 2 self tapping screws M3 x 8mm  
Green indicator marks