

ModuLED Pico | Edison Opto Modular Passive Star LED Cooler ø47mm

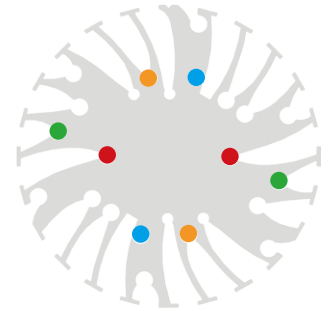
Mounting Instruction



Edison Opto with headquarters in Chung-Ho Dist, New Taipei City, Taiwan is a professional LED manufacture with specializes in designing and producing High-power LEDs, solid state lighting applications, LED sensors and SPDIFs. In response to rapid growth of capacity demand, Edison Opto has established factories in Dongguan and Yangzhou China and subsidiaries in USA and Germany. Edison Opto COB LED modules outstand in light quality and are available in the broadest lumen and CRI range available on the market.

Mounting indicator marks overview

MechaTronix recommends the use of a high thermal conductive interface between the LED module and the LED cooler. Either thermal grease, a thermal pad or a phase change thermal pad thickness 0.1-0.15mm is recommended. Thermal pads or phase change thermal pads can be pre-applied from MechaTronix.



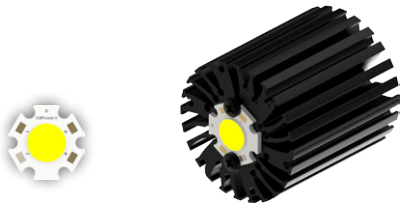
Edison Opto EdiPower II Star series

Model names

- 2PHV05xxxx
- 2PHV06xxxx
- 2PHV07xxxx
- 2PHV10xxxx

Mounting

- Direct mounting with 2 self tapping screws M3 x 6mm
- Red indicator marks



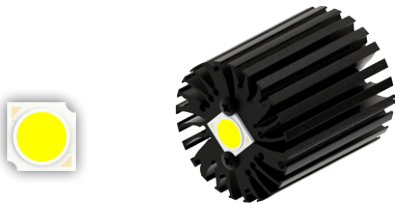
Edison Opto EdiPower III HM series

Model names 5W - 13W

- 2PHM05xxxx
- 2PHM09xxxx
- 2PHM13xxxx

Mounting

- Direct mounting with 2 self tapping screws M3 x 6mm
- Red indicator marks
- With Zhaga Book 11 LED holder
- BJB Spotlight connector 47.319.6060
- Ideal Industries Chip-Lok™ holder 50-2002CT
- Mounting with 2 self tapping screws M3 x 8mm
- Orange indicator marks

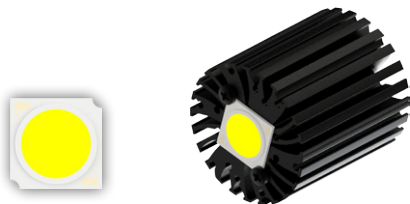


Model Names 16W - 24W

- 2PHM16xxxx
- 2PHM24xxxx

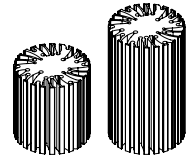
Mounting

- Direct mounting with 2 self tapping screws M3 x 6mm
- Blue indicator marks
- With Zhaga Book 3 LED holder
- BJB Spotlight connector 47.319.2021
- Ideal Industries Chip-Lok™ holder 50-2103CT
- TE Connectivity Lumawise type Z50 2213254-1
- TE Connectivity Lumawise type Z50 2213254-2
- Mounting with 2 self tapping screws M3 x 8mm
- Green indicator marks





ModuLED Pico



ø47 x H50 / 80 (mm)
Rth 5.3 - 4.2 °C/W
Power Pd 9.6 - 11.9 W

[MORE PRODUCT DETAILS](#)

ModuLED Pico | Edison Opto Modular Passive Star LED Cooler ø47mm

Mounting Instruction



Edison Opto EdiLex Spot Light Module (SLM)

Model Names

- 5PHR09xxxx
- 5PHR11xxxx

Mounting

- Direct mounting with 2 self tapping screws M3 x 10mm
Green indicator marks