

ø70 x H50 / 80 (mm)  
Rth 2.2 - 1.8 °C/W  
Power Pd 22.7 - 28 W

[MORE PRODUCT DETAILS](#)

## ModuLED Nano | Seoul Semiconductor Modular Passive Star LED Cooler ø70mm

### Mounting Instruction



SEOUL SEMICONDUCTOR

The new Seoul Semiconductor ZC series Chip-On-Board (COB) LED Arrays offer high lumen density and efficacies of up to 140lm/W in a single, easy-to-use LED component family. Available in all major color temperatures from 2700K up to 6000K, these high flux packages deliver system level performance of 700 lumens to over 6,000 lumens. The new ZC series family is available in a single 3-step MacAdam Ellipse binning, ensuring excellent color consistency with minimum CRI options of 70, and 80 combining high quality of light with high efficacy.

#### Mounting indicator marks overview

MechaTronix recommends the use of a high thermal conductive interface between the LED module and the LED cooler. Either thermal grease, a thermal pad or a phase change thermal pad thickness 0.1-0.15mm is recommended. Thermal pads or phase change thermal pads can be pre-applied from MechaTronix.



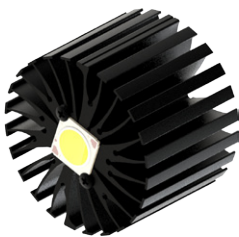
#### Seoul Semiconductor Acrich MJT COB 13.5x13.5mm

##### Model names

- SAWx0661A
- SAWx1062A
- SAWx1063A

##### Mounting

- Direct mounting with 2 self tapping screws M3 x 6mm  
Red indicator marks
- With Zhaga Book 3 LED holder  
Ledil HEKLA solderless connector FP15501\_HEKLA-C  
Mounting with 2 self tapping screws M3 x 8mm  
Green indicator marks
- With Zhaga Book 11 LED holder  
BJB Spotlight connector 47.319.6060  
Bender+Wirth 434 Typ 2  
Mounting with 2 self tapping screws M3 x 8mm  
Orange indicator marks



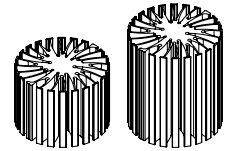
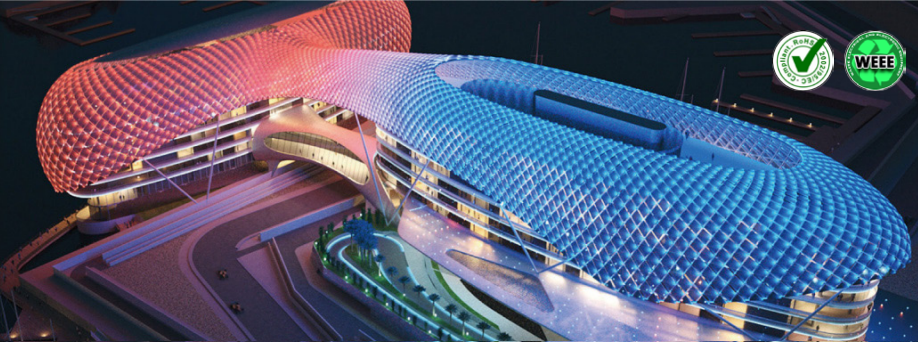
#### Seoul Semiconductor Acrich MJT COB 19x19mm

##### Model names

- SAWx1564A
- SAWx1565A
- SAWx1566A

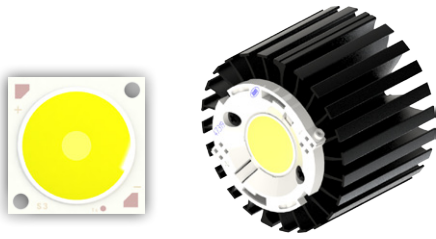
##### Mounting

- Direct mounting with 2 self tapping screws M3 x 6mm  
Blue indicator marks
- With Zhaga Book 3 LED holder  
BJB Spotlight connector 47.319.2025  
Ledil HEKLA solderless connector FP15949\_HEKLA-I  
Mounting with 2 self tapping screws M3 x 8mm  
Green indicator marks
- With Zhaga Book 11 LED holder  
BJB Spotlight connector 47.319.6024  
Mounting with 2 self tapping screws M3 x 8mm  
Orange indicator marks



## ModuLED Nano | Seoul Semiconductor Modular Passive Star LED Cooler ø70mm

### Mounting Instruction



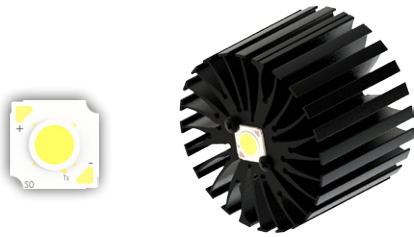
#### Seoul Semiconductor Acrich MJT COB 28x28mm

##### Model names

- SAWx22AAA
- SAWx2296A
- SAWx2298A

##### Mounting

- With Zhaga Book 3 LED holder  
BJB Spotlight connector 47.319.2314  
Bender+Wirth 431 Typ 2  
Mounting with 2 self tapping screws M3 x 8mm  
Green indicator marks



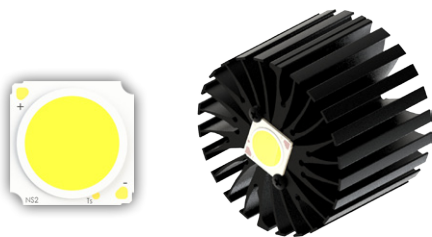
#### Seoul Semiconductor Acrich MJT SunLike COB 13.5x13.5mm

##### Model names

- SAWS0661A
- SAWS1063A

##### Mounting

- Direct mounting with 2 self tapping screws M3 x 6mm  
Red indicator marks
- With Zhaga Book 11 LED holder  
BJB Spotlight connector 47.319.6060  
Bender+Wirth 434 Typ 2  
Mounting with 2 self tapping screws M3 x 8mm  
Orange indicator marks



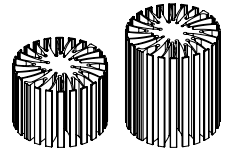
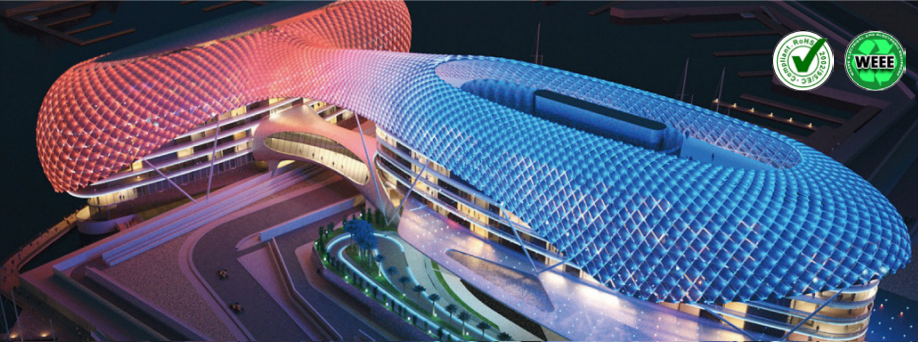
#### Seoul Semiconductor Acrich MJT SunLike COB 19x19mm

##### Model names

- SAWS1564A
- SAWS1566A

##### Mounting

- Direct mounting with 2 self tapping screws M3 x 6mm  
Blue indicator marks
- With Zhaga Book 3 LED holder  
BJB Spotlight connector 47.319.2025  
Ideal Industries Chip-Lok™ holder 50-2103CT  
Mounting with 2 self tapping screws M3 x 8mm  
Green indicator marks
- With Zhaga Book 11 LED holder  
BJB Spotlight connector 47.319.6024  
Mounting with 2 self tapping screws M3 x 8mm  
Orange indicator marks



## ModuLED Nano | Seoul Semiconductor Modular Passive Star LED Cooler ø70mm

### Mounting Instruction



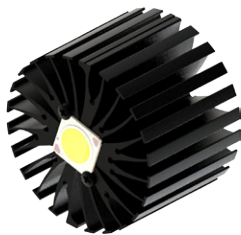
#### Seoul Semiconductor ZC4 / ZC6 Z-Power COB

##### Model names

- SDW81F1DY
- SDWx1F1B
- SDWx1F1C

##### Mounting

- Direct mounting with 2 self tapping screws M3 x 6mm  
Red indicator marks
- With Zhaga Book 3 LED holder  
Ledil HEKLA solderless connector FP15501\_HEKLA-C  
Mounting with 2 self tapping screws M3 x 8mm  
Green indicator marks
- With Zhaga Book 11 LED holder  
BJB Spotlight connector 47.319.6294  
Ideal Industries Chip-Lok™ holder 50-2002CT  
Mounting with 2 self tapping screws M3 x 8mm  
Orange indicator marks



#### Seoul Semiconductor ZC12 / ZC18 Z-Power COB

##### Model names

- SDWx2F1C
- SDWx3F1C

##### Mounting

- Direct mounting with 2 self tapping screws M3 x 6mm  
Blue indicator marks
- With Zhaga Book 3 LED holder  
BJB Spotlight connector 47.319.2021  
BJB Spotlight connector 47.319.2025  
Ideal Industries Chip-Lok™ holder 50-2103CT  
Ledil HEKLA solderless connector FP15949\_HEKLA-I  
TE Connectivity Lumawise type Z50 2213254  
Mounting with 2 self tapping screws M3 x 8mm  
Green indicator marks
- With Zhaga Book 11 LED holder  
BJB Spotlight connector 47.319.6024  
Mounting with 2 self tapping screws M3 x 8mm  
Green indicator marks



#### Seoul Semiconductor ZC25 / ZC40 Z-Power COB

##### Model names

- SDWx4F1C
- SDWx5F1C

##### Mounting

- With Zhaga Book 3 LED holder  
BJB Spotlight connector 47.319.2033  
Ideal Industries Chip-Lok™ holder 50-2204CT  
Mounting with 2 self tapping screws M3 x 8mm  
Green indicator marks