

ModuLED Nano | Luminus Modular Passive Star LED Cooler ø70mm

Mounting Instruction



Patented, high performance Luminus LEDs are the brightest and most versatile solid state light sources available today, redefining the solid state lighting landscape by enabling the adoption of LED technology into emerging markets. Luminus technology is used in commercial and industrial lighting fixtures, theatrical lighting, projectors, signs, medical equipment, UV curing... just about anywhere a bright, efficient, reliable, long-life light source is needed.

Mounting indicator marks overview

MechaTronix recommends the use of a high thermal conductive interface between the LED module and the LED cooler. Either thermal grease, a thermal pad or a phase change thermal pad thickness 0.1-0.15mm is recommended. Thermal pads or phase change thermal pads can be pre-applied from MechaTronix.



Luminus Gen 4 COB Array

Model names

- CXM-4 (Pico-COB)
- CXM-6
- CIM-9
- CLM-9
- CXM-9 (AC)

Mounting

- Direct mounting with 2 self tapping screws M3 x 6mm
Red indicator marks
- With Zhaga Book 3 LED holder
Bender+Wirth 634a
Mounting with 2 self tapping screws M3 x 6mm
Green indicator marks
- With Zhaga Book 11 LED holder
BJB spotlight connector 47.319.6060
BJB spotlight connector 47.360.1020
Ideal Industries Chip-Lok™ holder 50-2002CT
Bender+Wirth 434 Typ 2
Mounting with 2 self tapping screws M3 x 6mm
Orange indicator marks



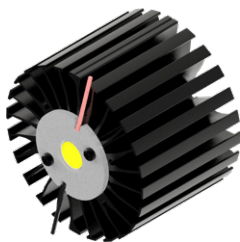
Luminus Gen 4 COB Array

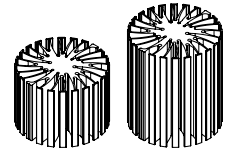
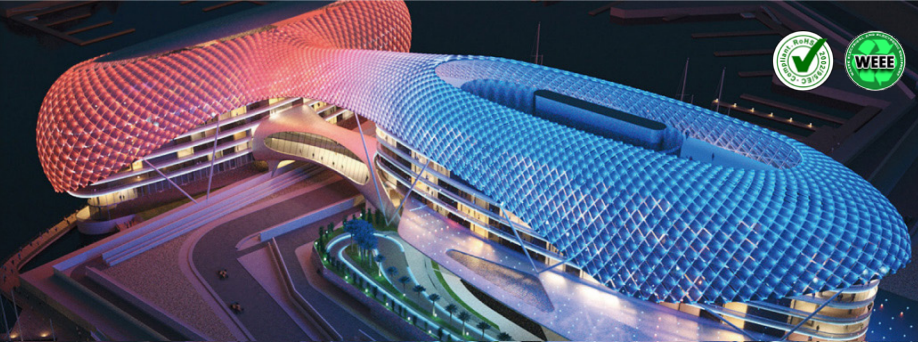
Model names

- CXM-9 (AA)

Mounting

- With Zhaga Book 11 LED holder
Bender+Wirth 461 Typ 1
Mounting with 2 self tapping screws M3 x 6mm
Orange indicator marks





ø70 x H50 / 80 (mm)
 Rth 2.2 - 1.8 °C/W
 Power Pd 22.7 - 28 W

[MORE PRODUCT DETAILS](#)

ModuLED Nano | Luminus Gen 4 COB Array LED Cooler ø70mm

Mounting Instruction

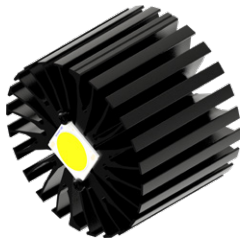
Luminus Gen 4 COB Array

Model names

- CIM-14
- CLM-14
- CXM-14 (AC)
- CGM-14

Mounting

- Direct mounting with 2 self tapping screws M3 x 6mm
 Blue indicator marks
- With Zhaga Book 3 LED holder
 BJB spotlight connector 47.319.2021
 Bender+Wirth 633a
 TE Connectivity Lumawise type Z50 2213254
 Mounting with 2 self tapping screws M3 x 6mm
 Green indicator marks
- With Zhaga Book 11 LED holder
 BJB spotlight connector 47.319.6024
 Mounting with 2 self tapping screws M3 x 6mm
 Orange indicator marks



Luminus Gen 4 COB Array

Model names

- CXM-18

Mounting

- With Zhaga Book 3 LED holder
 BJB spotlight connector 47.319.2281
 Mounting with 2 self tapping screws M3 x 6mm
 Green indicator marks



Luminus Gen 4 COB Array

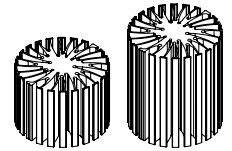
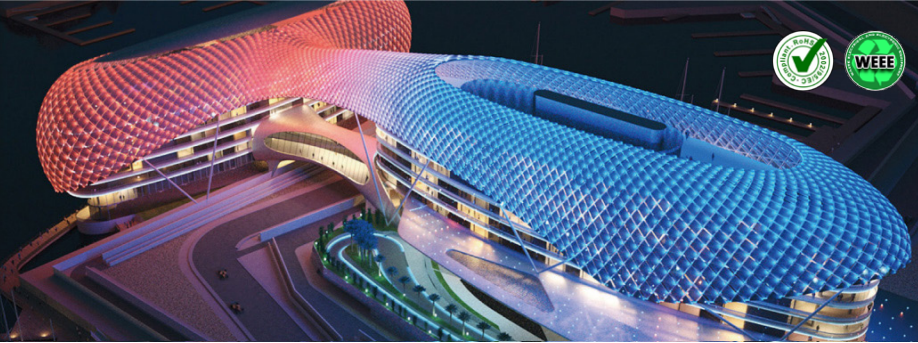
Model names

- CIM-22
- CLM-22

Mounting

- With Zhaga Book 3 LED holder
 BJB spotlight connector 47.319.2033
 Bender+Wirth 631a
 Mounting with 2 self tapping screws M3 x 6mm
 Green indicator marks





ModuLED Nano | Luminus Gen 3 COB Array LED Cooler ø70mm

Mounting Instruction

Luminus Gen 3 COB Array

Model names

- CIM-9 (AC)
- CLM-9 (AC)
- CXM-9 (AC)

Mounting

- Direct mounting with 2 self tapping screws M3 x 6mm
Red indicator marks
- With Zhaga Book 3 LED holder
Bender+Wirth 634a
Mounting with 2 self tapping screws M3 x 6mm
Green indicator marks
- With Zhaga Book 11 LED holder
BJB spotlight connector 47.319.6060
BJB spotlight connector 47.360.1020
Ideal Industries Chip-Lok™ holder 50-2002CT
Bender+Wirth 434 Typ 2
Mounting with 2 self tapping screws M3 x 6mm
Orange indicator marks



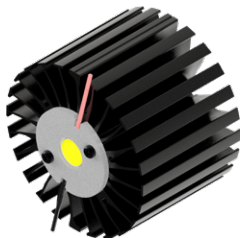
Luminus Gen 3 COB Array

Model names

- CHM-9 (XD20)

Mounting

- With Zhaga Book 11 LED holder
Bender+Wirth 461 Typ 1
Mounting with 2 self tapping screws M3 x 6mm
Orange indicator marks



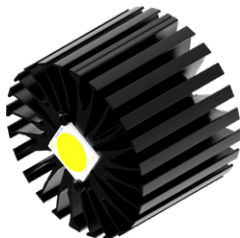
Luminus Gen 3 COB Array

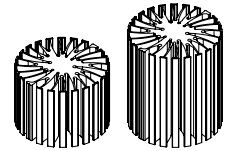
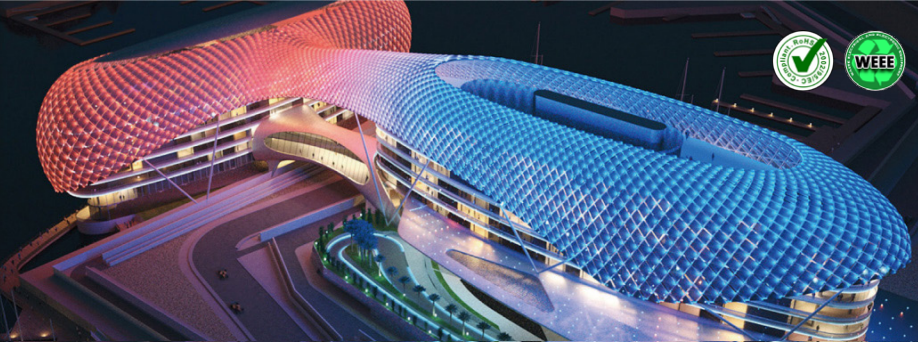
Model names

- CXM-11 (AC)
- CIM-14 (AC)
- CLM-14 (AC)
- CXM-14 (AC)

Mounting

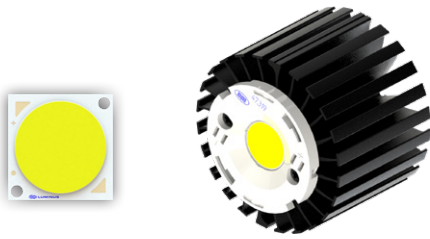
- Direct mounting with 2 self tapping screws M3 x 6mm
Blue indicator marks
- With Zhaga Book 3 LED holder
BJB spotlight connector 47.319.2021
Bender+Wirth 633a
TE Connectivity Lumawise type Z50 2213254
Mounting with 2 self tapping screws M3 x 6mm
Green indicator marks
- With Zhaga Book 11 LED holder
BJB spotlight connector 47.319.6024
Mounting with 2 self tapping screws M3 x 6mm
Orange indicator marks





ModuLED Nano | Luminus Modular Passive Star LED Cooler ø70mm

Mounting Instruction



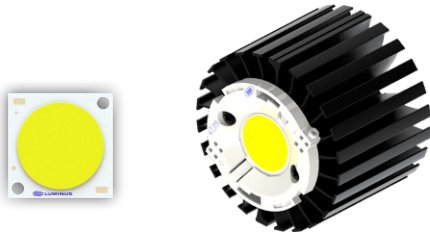
Luminus Gen 3 COB Array

Model names

- CXM-18 (AA)

Mounting

- With Zhaga Book 3 LED holder
 BJB spotlight connector 47.319.2281
 Mounting with 2 self tapping screws M3 x 6mm
 Green indicator marks



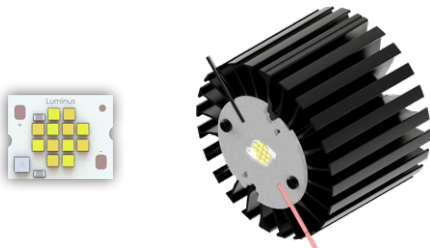
Luminus Gen 3 COB Array

Model names

- CLM-22 (AC)

Mounting

- With Zhaga Book 3 LED holder
 BJB spotlight connector 47.319.2033
 Bender+Wirth 631a
 Mounting with 2 self tapping screws M3 x 6mm
 Green indicator marks



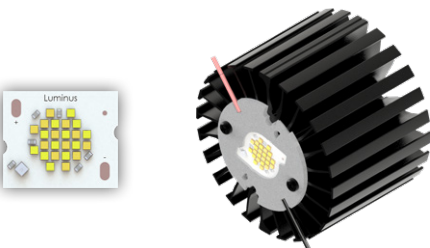
Luminus Dynamic COB Warm Dimming Modules

Model names

- CDM-9

Mounting

- With Zhaga Book 3 LED holder
 Bender+Wirth 490 Typ L8
 Mounting with 2 self tapping screws M3 x 6mm
 Green indicator marks
- With Zhaga Book 11 LED holder
 BJB spotlight connector 47.319.6380
 Mounting with 2 self tapping screws M3 x 6mm
 Green indicator marks



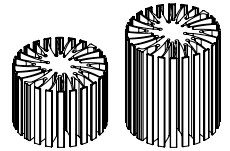
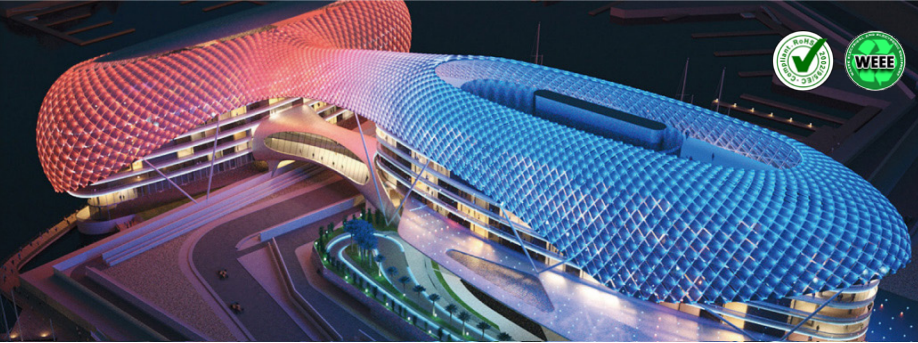
Luminus Dynamic COB Warm Dimming Modules

Model names

- CDM-14
- CDM-18

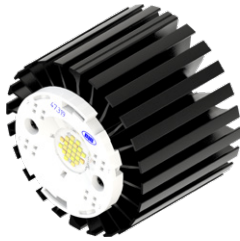
Mounting

- With Zhaga Book 3 LED holder
 BJB spotlight connector 47.360.5090
 Bender+Wirth 491 Typ L8
 Mounting with 2 self tapping screws M3 x 6mm
 Green indicator marks



ModuLED Nano | Luminus Modular Passive Star LED Cooler ø70mm

Mounting Instruction



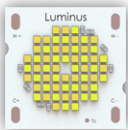
Luminus Dynamic COB Two Channel CCT Tunable Modules

Model names

- CTM-14
- CTM-18

Mounting

- With Zhaga Book 3 LED holder
BJB spotlight connector 47.319.2051
Bender+Wirth 442 Typ 2
Mounting with 2 self tapping screws M3 x 6mm
Green indicator marks



Luminus Dynamic COB Two Channel CCT Tunable Modules

Model names

- CTM-22

Mounting

- With Zhaga Book 3 LED holder
Bender+Wirth 494 Typ Z1
Mounting with 2 self tapping screws M3 x 6mm
Green indicator marks