

ø86 x H30 / 50 / 80 (mm)
Rth 1.8 - 1.5 - 1.2 °C/W
Power Pd 28 - 33 - 42 W

[MORE PRODUCT DETAILS](#)

ModuLED Micro | Philips Fortimo Modular Passive Star LED Cooler ø86mm

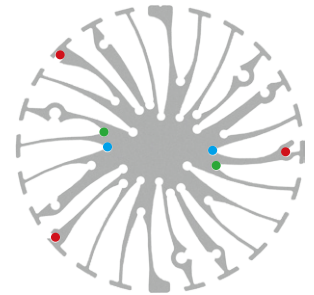
Mounting Instruction

PHILIPS

The third Philips Fortimo LED SLM generation is the ideal solution for spot lighting fixtures and highly efficient compact down light luminaires. It is specifically designed for the retail market showcasing retail merchandise in bright and vivid light. This generation is equipped with new Chip-On-Board (COB) LED technology. This technology enables the creation of the most efficient point source Philips LED system available.

Mounting indicator marks overview

MechaTronix recommends the use of a high thermal conductive interface between the LED module and the LED cooler. Either thermal grease, a thermal pad or a phase change thermal pad thickness 0.1-0.15mm is recommended. Thermal pads or phase change thermal pads can be pre-applied from MechaTronix.



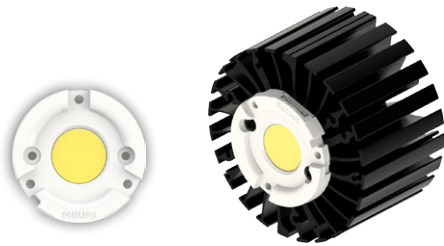
Philips Fortimo SLM Gen 4 / Crisp White Spotlight Modules

Model names

- Fortimo LED SLM 1100lm xxx L13 G4
- Fortimo LED SLM 1100lm 930 CW L13 G4
- Fortimo LED SLM 2000lm xxx L13 G4
- Fortimo LED SLM 2000lm 930 CW L13 G4
- Fortimo LED SLM 3000lm xxx L15 G4
- Fortimo LED SLM 3000lm 930 CW L15 G4
- Fortimo LED SLM 4500lm xxx L19 G4
- Fortimo LED SLM 3800lm 930 CW L19 G4

Mounting

- Direct mounting with 2 self tapping screws M3 x 6mm
- Green indicator marks



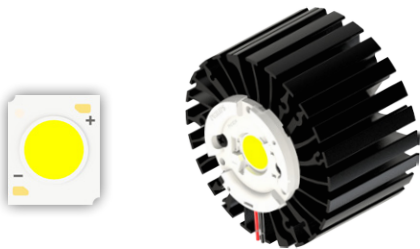
Philips Fortimo SLM 1205 - 1208 Gen 6 / Premium White / Crisp White / Food application Spotlight Modules

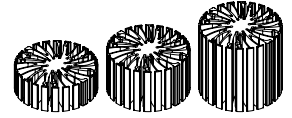
Model names

- Fortimo SLM C xxx xxx 1205 L13 2024 G6
- Fortimo SLM C xxx xxx 1208 L15 2024 G6

Mounting

- Direct mounting with 2 self tapping screws M3 x 6mm
- Blue indicator marks
- With Zhaga Book 3 LED holder
- Philips Fortimo SLM H xx 2024 G1
- Mounting with 2 self tapping screws M3 x 8mm
- Green indicator marks





ø86 x H30 / 50 / 80 (mm)
Rth 1.8 - 1.5 - 1.2 °C/W
Power Pd 28 - 33 - 42 W

[MORE PRODUCT DETAILS](#)

ModuLED Micro | Philips Fortimo Modular Passive Star LED Cooler ø86mm

Mounting Instruction



Philips Fortimo SLM 1211 - 1216 Gen 6 / Premium White / Crisp White / Food application Spotlight Modules

Model names

- Fortimo SLM C xxx xx 1211
L19 2828 G6
- Fortimo SLM C xxx xx 1216
L23 2828 G6

Mounting

- With Zhaga Book 3 LED holder
Philips Fortimo SLM H xx 2828 G1
Mounting with 2 self tapping screws M3 x 8mm
Green indicator marks



Philips Fortimo DLM GEN5 LED Modules

Model names

- Fortimo LED DLM 2000 xxW/
xxx Gen 5
- Fortimo LED DLM 3000 xxW/
xxx Gen 5

Mounting

- Direct mounting with 3 self tapping screws M3 x 8mm
Red indicator marks