

ø86 x H30 / 50 / 80 (mm)
 Rth 1.8 - 1.5 - 1.2 °C/W
 Power Pd 28 - 33 - 42 W

MORE PRODUCT DETAILS

ModuLED Micro | Citizen Modular Passive Star LED Cooler ø86mm

Mounting Instruction

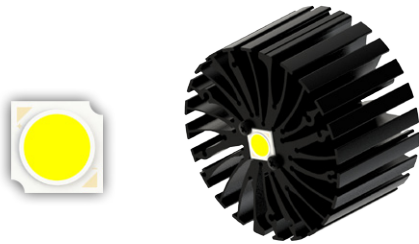
CITIZEN

Micro HumanTech

Citizen Electronics Co., Ltd. is a precision electronics manufacturer with headquarters in Fujiyoshida City, Yamanash Japan. Prefecture and a subsidiary of Citizen Holdings Co., Ltd. Citizen Electronics is a leader in LED light sources for electronic devices and high power white LED lamps. The second generation CITELED CLL LED COB modules and the new upcoming generation CLU distinguish themselves through the combination of high lumen per watt performance combined with a perfect light quality control.

Mounting indicator marks overview

MechaTronix recommends the use of a high thermal conductive interface between the LED module and the LED cooler. Either thermal grease, a thermal pad or a phase change thermal pad thickness 0.1-0.15mm is recommended. Thermal pads or phase change thermal pads can be pre-applied from MechaTronix.



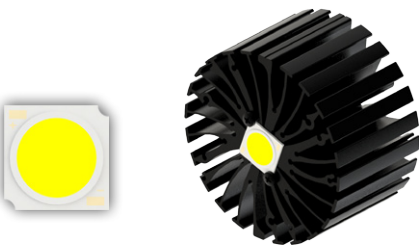
Citizen Cited COB CLU028-CLU02J

Model names

- CLU028-xxxxxx
- CLU02J-xxxxxx

Mounting

- Direct mounting with 2 self tapping screws M3 x 6mm
Red indicator marks
- With Zhaga Book 11 LED holder
BJB Spotlight connector 47.319.6060
Ideal Industries Chip-Lok™ holder 50-2002CT
Mounting with 2 self tapping screws M3 x 6mm
Orange indicator marks
- With Zhaga Book 3 LED holder
Bender+Wirth Hybrid holder 634a available with different housings
Mounting with 2 self tapping screws M3 x 6mm
Green indicator marks



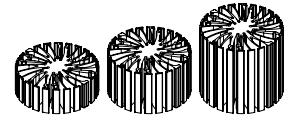
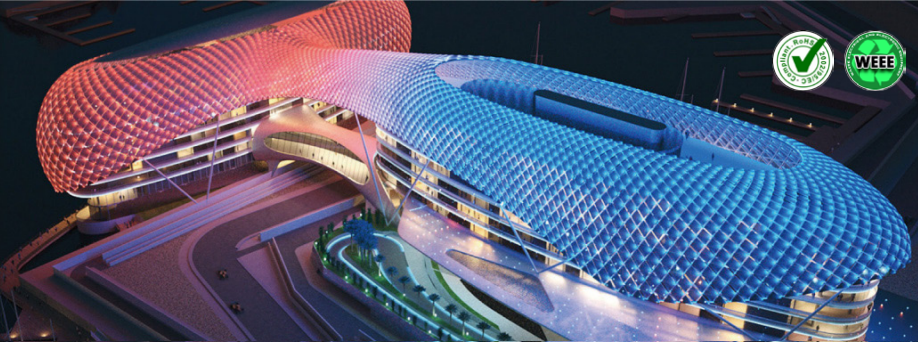
Citizen Cited COB CLU038 - CLU03J

Model names

- CLU038-xxxxxx
- CLU03J-xxxxxx

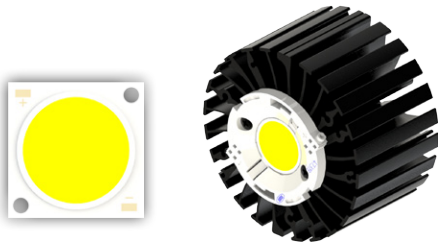
Mounting

- Direct mounting with 2 self tapping screws M3 x 6mm
Blue indicator marks
- With Zhaga Book 3 LED holder
BJB spotlight connector 47.319.2021
Bender+Wirth Hybrid holder 633a available with different housings
Ideal Industries Chip-Lok™ holder 50-2103CT
TE Connectivity Lumawise type Z50 2213254
Mounting with 2 self tapping screws M3 x 8mm
Green indicator marks



ModuLED Micro | Citizen Modular Passive Star LED Cooler ø86mm

Mounting Instruction



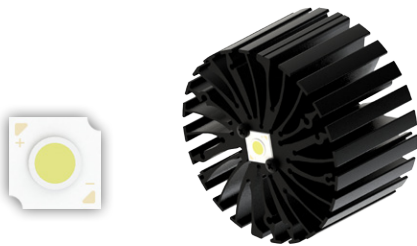
Citizen Cited COB CLU048 - CLU04J

Model names

- CLU048-xxxxxx
- CLU04J-xxxxxx

Mounting

- With Zhaga Book 3 LED holder
BJB spotlight connector 47.319.2033
Bender+Wirth Hybrid holder 631a available with different housings
Ideal Industries Chip-Lok™ holder 50-2204CT
Mounting with 2 self tapping screws M3 x 8mm
Green indicator marks



Citizen Cited COB High Intensity Type Version 3 CLU702

Model names

- CLU702-1202C9

Mounting

- Direct mounting with 2 self tapping screws M3 x 6mm
Red indicator marks
- With Zhaga Book 11 LED holder
BJB Spotlight connector 47.319.6060
Ideal Industries Chip-Lok™ holder 50-2002CT
Mounting with 2 self tapping screws M3 x 6mm
Orange indicator marks
- With Zhaga Book 3 LED holder
Bender+Wirth Hybrid holder 633a available with different housings
Mounting with 2 self tapping screws M3 x 6mm
Green indicator marks



Citizen Cited COB High Intensity Type Version 3 CLU712

Model names

- CLU712-1204C9

Mounting

- Direct mounting with 2 self tapping screws M3 x 6mm
Blue indicator marks
- With Zhaga Book 3 LED holder
BJB spotlight connector 47.319.2021
Bender+Wirth Hybrid holder 633a available with different housings
Ideal Industries Chip-Lok™ holder 50-2103CT
TE Connectivity Lumawise type Z50 2213254
Mounting with 2 self tapping screws M3 x 8mm
Green indicator marks