

ø134 x H20 / 50 / 100 (mm)
Rth 1.32 - 0.88 - 0.67 °C/W
Power Pd 38 - 57 - 75 W

[MORE PRODUCT DETAILS](#)

ModuLED Mega | Sharp Modular Passive Star LED Cooler ø134mm

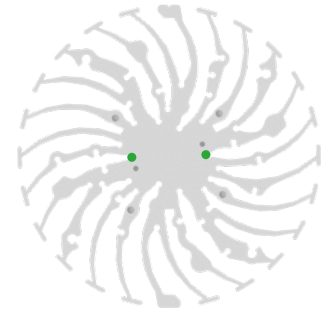
Mounting Instruction

SHARP

Sharp Zenigata Chip on Board (COB) technology leverages 40 years of LED expertise to help your products outshine the competition with some of the highest brightness-per-watt in the industry. Sharp's new Mega Zenigata 50W – 80W modules take traditional, high-power lighting applications head on with power-saving LED alternatives. Sharp Devices Europe has launched an important new portfolio of LED modules dubbed INTERMO. The Standard INTERMO is a Zhaga Book 3 form-factor module, which ensures compatibility with a large eco-system of third-party products.

Mounting indicator marks overview

MechaTronix recommends the use of a high thermal conductive interface between the LED module and the LED cooler. Either thermal grease, a thermal pad or a phase change thermal pad thickness 0.1-0.15mm is recommended. Thermal pads or phase change thermal pads can be pre-applied from MechaTronix.



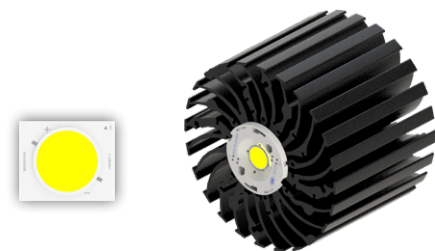
Sharp INTERMO Standard / Slim LED Modules

Model names

- GW7MMCxxGZC - 3000 lm
- GW7MGDxxGZC - 3000 lm
- GW7MMDxxGZC - 4000 lm
- GW7MGExxGZC - 4000 lm
- GW7MMExxGZC - 5000 lm

Mounting

- Direct mounting with 2 self tapping screws M3 x 6mm
- Green indicator marks



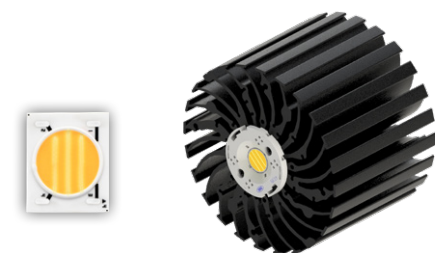
Sharp Mega Zenigata 25-40W / 35-50W / 50-80W LED COB

Model names

- GW5DxCxxM04
- GW6DxCxxNFC
- GW6DxDxxNFC
- GW5DxExxMR5
- GW6DxExxNFC

Mounting

- With Zhaga Book 3 LED holder
- BJB spotlight connector 47.319.2011
- Ideal Industries Chip-Lok™ holder 50-2100SH
- Mounting with 2 self tapping screws M3 x 6mm
- Green indicator marks



Sharp Tiger Zenigata 25W LED COB

Model names

- GW6TGCBG40C

Mounting

- With Zhaga Book 3 LED holder
- BJB spotlight connector 47.319.2051
- Mounting with 2 self tapping screws M3 x 6mm
- Green indicator marks