

ø134 x H20 / 50 / 100 (mm)
Rth 1.32 - 0.88 - 0.67 °C/W
Power Pd 38 - 57 - 75 W

[MORE PRODUCT DETAILS](#)

ModuLED Mega | Osram PrevaLED Modular Passive Star LED Cooler ø134mm

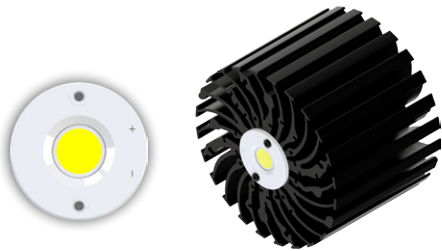
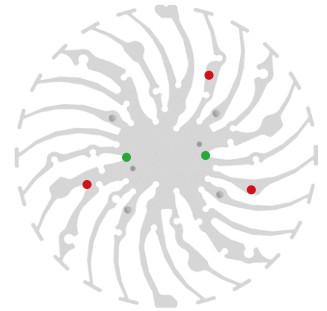
Mounting Instruction



With the PrevaLED Core and PrevaLED Core AC, Osram leads the path of versatile LED light modules interchangeable according Zhaga book 3 specifications. With an initial color binning below 3 steps Mc Adam, a wide range of lumen packages from 1.100lm all the way up to 5.000lm and a broad availability of color temperatures, the Osram PrevaLED Core found it's strive in high-end shop and down light applications with an uncompromised lighting quality.

Mounting indicator marks overview

MechaTronix recommends the use of a high thermal conductive interface between the LED module and the LED cooler. Either thermal grease, a thermal pad or a phase change thermal pad thickness 0.1-0.15mm is recommended. Thermal pads or phase change thermal pads can be pre-applied from MechaTronix.



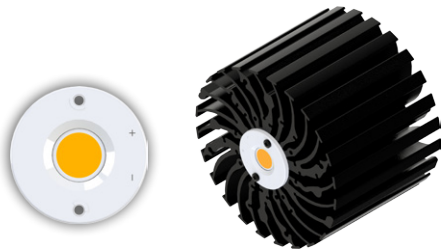
Osram PrevaLED Core G7 L15 H1

Model names

- PL-CORE-G7 5000-xxx L15 H1

Mounting

- Direct mounting with 2 self tapping screws M3 x 10mm
Green indicator marks



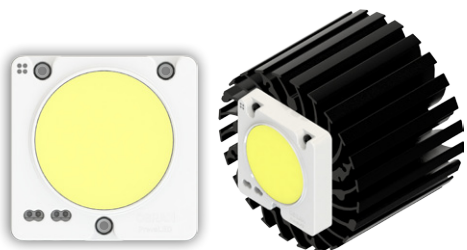
Osram PrevaLED Core G7 Food / Fashion

Model names

- PL-CORE-G7 3000-927 L15 H1
- PL-CORE-G7 3000-Sxx L15 H1
- PL-CORE-G7 5000-927 L15 H1
- PL-CORE-G7 5000-Sxx L15 H1

Mounting

- Direct mounting with 2 self tapping screws M3 x 10mm
Green indicator marks



Osram PrevaLED Cube G3

Model names

- PL-CUBE -5000-xxx-G3

Mounting

- Direct mounting with 3 self tapping screws M3 x 10mm
Red indicator marks