

ModuLED Mega | Luminus Modular Passive Star LED Cooler ø134mm

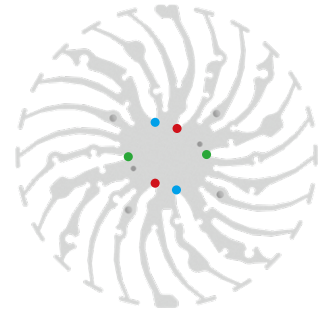
Mounting Instruction



Patented, high performance Luminus LEDs are the brightest and most versatile solid state light sources available today, redefining the solid state lighting landscape by enabling the adoption of LED technology into emerging markets. Luminus technology is used in commercial and industrial lighting fixtures, theatrical lighting, projectors, signs, medical equipment, UV curing... just about anywhere a bright, efficient, reliable, long-life light source is needed.

Mounting indicator marks overview

MechaTronix recommends the use of a high thermal conductive interface between the LED module and the LED cooler. Either thermal grease, a thermal pad or a phase change thermal pad thickness 0.1-0.15mm is recommended. Thermal pads or phase change thermal pads can be pre-applied from MechaTronix.



Luminus Gen 4 COB Array

Model names

- CXM-9 (AC)

Mounting

- With Zhaga Book 3 LED holder
Bender+Wirth 634a
Mounting with 2 self tapping screws M3 x 6mm
Green indicator marks



Luminus Gen 4 COB Array

Model names

- CIM-14
- CLM-14
- CXM-14 (AC)
- CGM-14

Mounting

- Direct mounting with 2 self tapping screws M3 x 6mm
Red indicator marks
- With Zhaga Book 3 LED holder
BJB spotlight connector 47.319.2021
Bender+Wirth 633a
TE Connectivity Lumawise type Z50 2213254
Mounting with 2 self tapping screws M3 x 6mm
Green indicator marks



Luminus Gen 4 COB Array

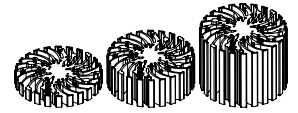
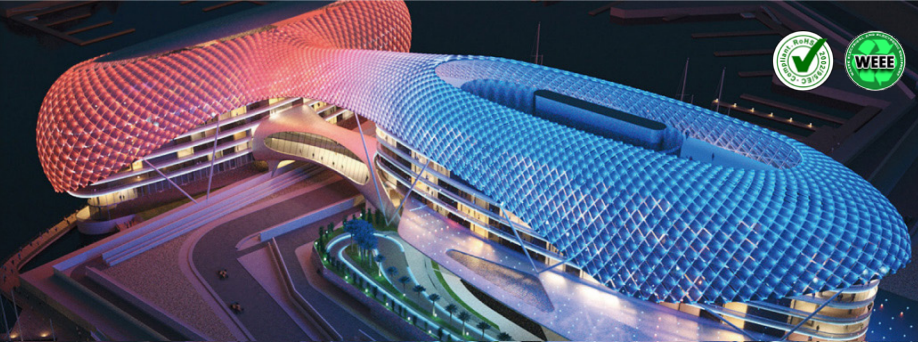
Model names

- CXM-18

Mounting

- With Zhaga Book 3 LED holder
BJB spotlight connector 47.319.2281
Mounting with 2 self tapping screws M3 x 6mm
Green indicator marks



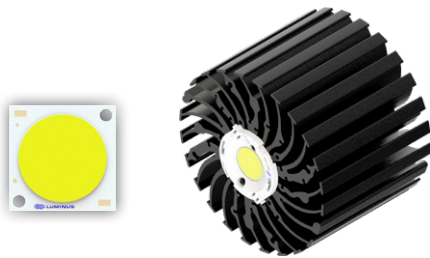


ø134 x H20 / 50 / 100 (mm)
 Rth 1.32 - 0.88 - 0.67 °C/W
 Power Pd 38 - 57 - 75 W

[MORE PRODUCT DETAILS](#)

ModuLED Mega | Luminus Modular Passive Star LED Cooler ø134mm

Mounting Instruction



Luminus Gen 4 COB Array

Model names

- CIM-22
- CLM-22
- CXM-22
- CGM-22

Mounting

- Direct mounting with 2 self tapping screws M3 x 6mm
Blue indicator marks
- With Zhaga Book 3 LED holder
BJB spotlight connector 47.319.2033
Bender+Wirth 631a
Mounting with 2 self tapping screws M3 x 6mm
Green indicator marks



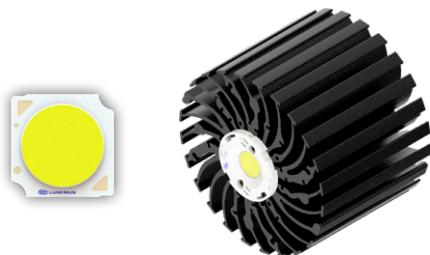
Luminus Gen 3 COB Array

Model names

- CXM-11 (AC)
- CIM-14 (AC)
- CLM-14 (AC)
- CXM-14 (AC)

Mounting

- Direct mounting with 2 self tapping screws M3 x 6mm
Red indicator marks
- With Zhaga Book 3 LED holder
BJB spotlight connector 47.319.2021
Bender+Wirth 633a
TE Connectivity Lumawise type Z50 2213254
Mounting with 2 self tapping screws M3 x 6mm
Green indicator marks



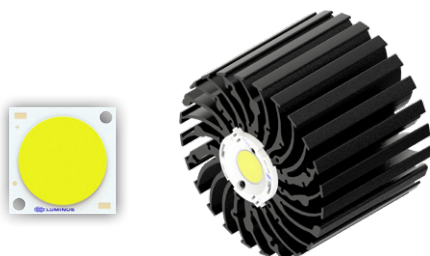
Luminus Gen 3 COB Array

Model names

- CXM-18 (AA)

Mounting

- With Zhaga Book 3 LED holder
BJB spotlight connector 47.319.2281
Mounting with 2 self tapping screws M3 x 6mm
Green indicator marks



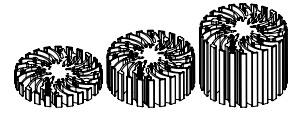
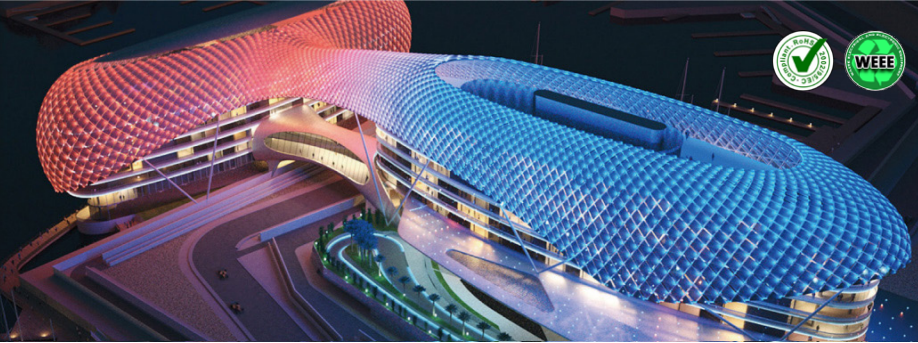
Luminus Gen 3 COB Array

Model names

- CLM-22 (AC)
- CXM-22 (AC)

Mounting

- Direct mounting with 2 self tapping screws M3 x 6mm
Blue indicator marks
- With Zhaga Book 3 LED holder
BJB spotlight connector 47.319.2033
Bender+Wirth 631a
Mounting with 2 self tapping screws M3 x 6mm
Green indicator marks

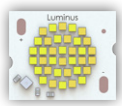


ø134 x H20 / 50 / 100 (mm)
Rth 1.32 - 0.88 - 0.67 °C/W
Power Pd 38 - 57 - 75 W

[MORE PRODUCT DETAILS](#)

ModuLED Mega | Luminus Modular Passive Star LED Cooler ø134mm

Mounting Instruction



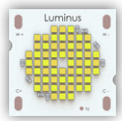
Luminus Dynamic COB Warm Dimming Modules

Model names

- CDM-18

Mounting

- With Zhaga Book 3 LED holder
BJB spotlight connector 47.360.5090
Bender+Wirth 491 Typ L8
Mounting with 2 self tapping screws M3 x 6mm
Green indicator marks



Luminus Dynamic COB Two Channel CCT Tunable Modules

Model names

- CTM-22

Mounting

- With Zhaga Book 3 LED holder
Bender+Wirth 494 Typ Z1
Mounting with 2 self tapping screws M3 x 6mm
Green indicator marks