

ModuLED Giga | GE Lighting Modular Passive Star LED Cooler ø152mm

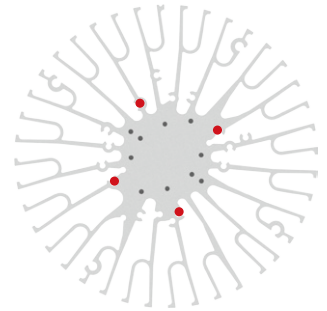
Mounting Instruction



GE Infusion™ is a game-changing technology and one of the most flexible LED lighting solutions on the market. As a designer, OEM or end-users, you can choose from an extensive selection of modules. Plus, there's the assurance of GE reliability and performance.

Mounting indicator marks overview

MechaTronix recommends the use of a high thermal conductive interface between the LED module and the LED cooler. Either thermal grease, a thermal pad or a phase change thermal pad thickness 0.1-0.15mm is recommended. Thermal pads or phase change thermal pads can be pre-applied from MechaTronix.



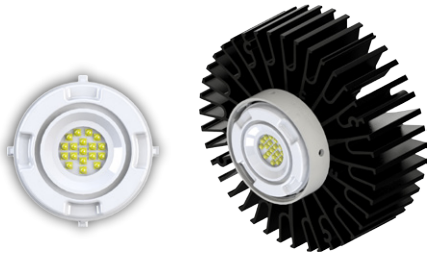
Infusion M-series Spot Light Modules

Model names

- Infusion M3000 series
- Infusion M4500 series

Mounting

- Twist and lock LED engine
- Mounting with GE LED collar by 4 self tapping screws M4 x 6mm or 8mm
- Red indicator marks



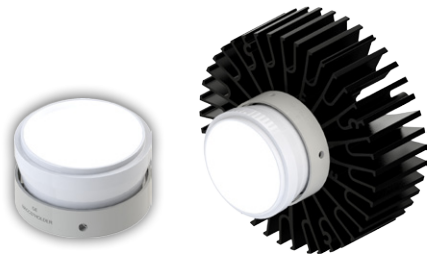
Infusion DLM-series Down Light Modules

Model names

- Infusion DLM3000 series
- Infusion DLM4000 series

Mounting

- Twist and lock LED engine
- Mounting with GE LED collar by 4 self tapping screws M4 x 6mm or 8mm
- Red indicator marks



Infusion NPM-series Narrow Punch Modules

Model names

- MP30/827/W/N
- MP30/830/W/N
- MP30/930/W/N
- MP30/840/W/N

Mounting

- Twist and lock LED engine
- Mounting with GE LED collar by 4 self tapping screws M4 x 6mm or 8mm
- Red indicator marks

