

ø152 x H100 / 150 (mm)
 Rth 0.52 - 0.46 °C/W
 Power Pd 95 - 110 W

MORE PRODUCT DETAILS

ModuLED Giga-HBG | Vossloh Schwabe High Bay LED Cooler ø152mm with driver connection system

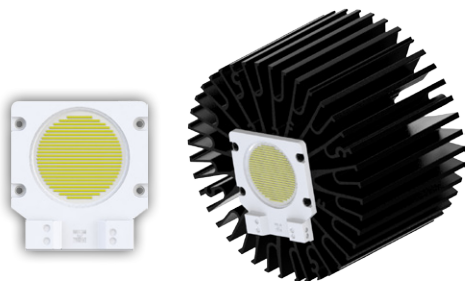
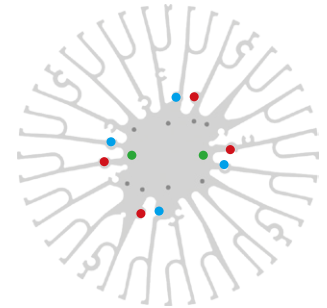
Mounting Instruction



Headquartered in Germany, VosslohSchwabe counts as a technology leader within the lighting sector. Top quality, high-performance products form the basis of the company's success. Panasonic employs 367,000 members of staff with an annual turnover of 76.75 billion Euros (8692.7 billion yen) and is represented throughout the world by more than 634 companies or representations in Asia, America and Europe. The Vossloh Schwabe Luga Shop LED modules are ideal solution for high-end luminaire designs where quality stands at the first place.

Mounting indicator marks overview

MechaTronix recommends the use of a high thermal conductive interface between the LED module and the LED cooler. Either thermal grease, a thermal pad or a phase change thermal pad thickness 0.1-0.15mm is recommended. Thermal pads or phase change thermal pads can be pre-applied from MechaTronix.



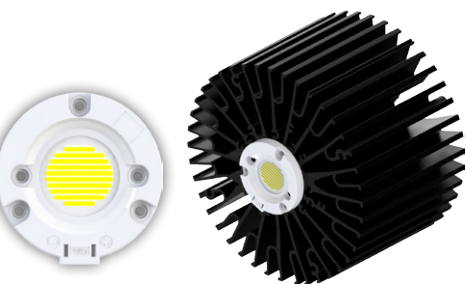
Luga Industrial LED modules

Model names

- WU-M-467 / WU-M-443

Mounting

- Direct mounting with 4 self tapping screws M3 x 6mm
 Red indicator marks



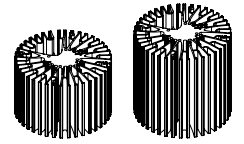
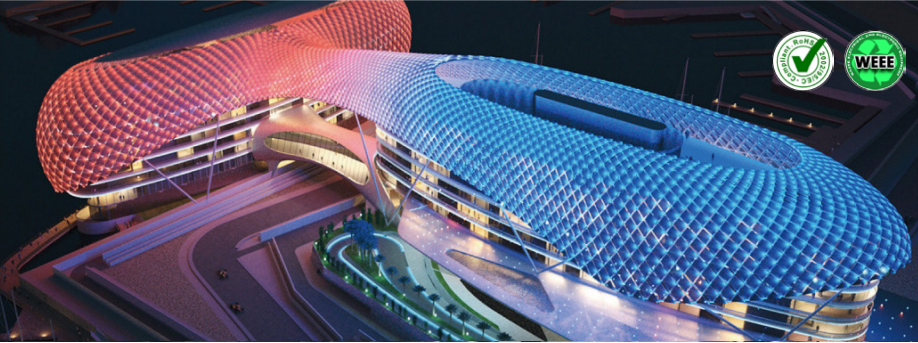
Luga Shop 2014 LED modules

Model names

- WU-M-485 / WU-M-462
- WU-M-486 / WU-M-464

Mounting

- Direct mounting with 2 screws M3 x 8mm
 Green indicator marks

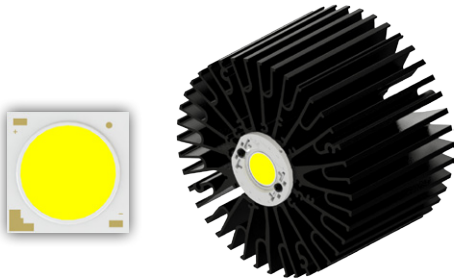


ø152 x H100 / 150 (mm)
Rth 0.52 - 0.46 °C/W
Power Pd 95 - 110 W

[MORE PRODUCT DETAILS](#)

ModuLED Giga-HBG | Vossloh Schwabe High Bay LED Cooler ø152mm with driver connection system

Mounting Instruction



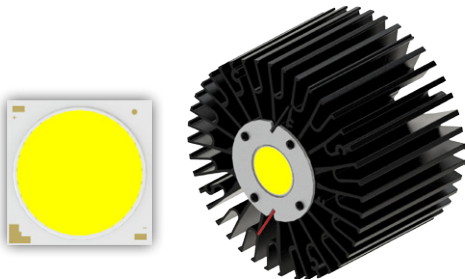
Luga Shop C 2016 COB 3000lm - 15000lm

Model names

- DMC12CxxxF
- DMC18CxxxF

Mounting

- With Luga Shop C holder 559164
Mounting with 2 screws M3 x 6mm
Green indicator marks



Model names

- DMC18QxxxF

Mounting

- With LED holder
CoolConnect® holder COB 38x38
(Co-development LED holder with Bender+Wirth)
Mounting with 4 self tapping screws M3 x 6mm
Blue indicator marks