

ø99 x H50 / 80 (mm)
Rth 1.34 - 1.02 °C/W
Power Pd 37.3 - 48.9 W

[MORE PRODUCT DETAILS](#)

ModuLED | Luminus Modular Passive Star LED Cooler ø99mm

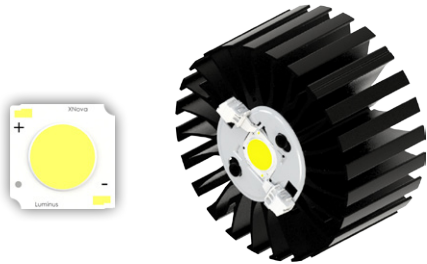
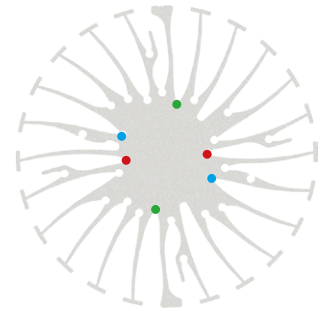
Mounting Instruction



Patented, high performance Luminus LEDs are the brightest and most versatile solid state light sources available today, redefining the solid state lighting landscape by enabling the adoption of LED technology into emerging markets. Luminus technology is used in commercial and industrial lighting fixtures, theatrical lighting, projectors, signs, medical equipment, UV curing... just about anywhere a bright, efficient, reliable, long-life light source is needed.

Mounting indicator marks overview

MechaTronix recommends the use of a high thermal conductive interface between the LED module and the LED cooler. Either thermal grease, a thermal pad or a phase change thermal pad thickness 0.1-0.15mm is recommended. Thermal pads or phase change thermal pads can be pre-applied from MechaTronix.



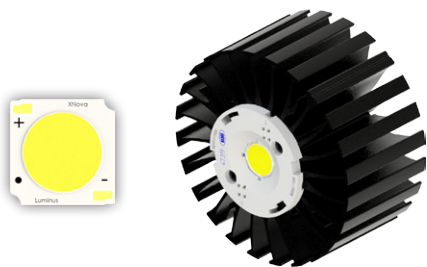
Luminus Xnova COB Array

Model names

- CXM-11 (ACxx)
- CHM-11-XH00

Mounting

- With Zhaga Book 3 LED holder
- Ideal Industries Chip-Lok™ holder 50-2103CT
- TE Connectivity Lumawise type Z50 2213254-1
- TE Connectivity Lumawise type Z50 2213254-2
- Mounting with 2 self tapping screws M3 x 6mm
- Green indicator marks



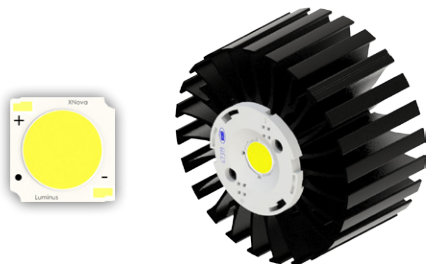
Luminus Xnova COB Array

Model names

- CLM-14 (ACxx)
- CXM-14 (ACxx)
- CHM-14 (ACxx)

Mounting

- With Zhaga Book 3 LED holder
- BJB spotlight connector 47.319.2021
- Ideal Industries Chip-Lok™ holder 50-2103CT
- TE Connectivity Lumawise type Z50 2213254-1
- TE Connectivity Lumawise type Z50 2213254-2
- Mounting with 2 self tapping screws M3 x 6mm
- Green indicator marks



Luminus Xnova Studio COB Array

Model names

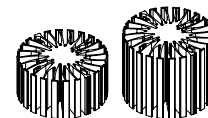
- CVM-14

Mounting

- With Zhaga Book 3 LED holder
- BJB spotlight connector 47.319.2021
- Ideal Industries Chip-Lok™ holder 50-2103CT
- TE Connectivity Lumawise type Z50 2213254-1
- TE Connectivity Lumawise type Z50 2213254-2
- Mounting with 2 self tapping screws M3 x 6mm
- Green indicator marks



ModuLED

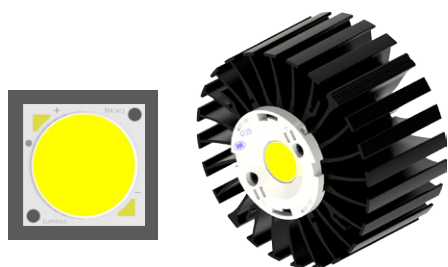


ø99 x H50 / 80 (mm)
Rth 1.34 - 1.02 °C/W
Power Pd 37.3 - 48.9 W

[MORE PRODUCT DETAILS](#)

ModuLED | Luminus Modular Passive Star LED Cooler ø99mm

Mounting Instruction



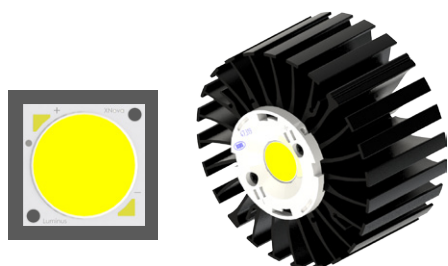
Luminus Xnova COB Array

Model names

- ☑ CXM-18

Mounting

- ☑ With Zhaga Book 3 LED holder
BJB spotlight connector 47.319.2281
Ideal Industries Chip-Lok™ holder 50-2102SL
Mounting with 2 self tapping screws M3 x 6mm
Green indicator marks



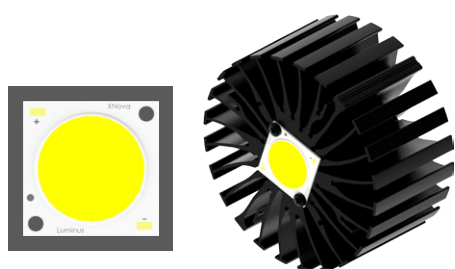
Luminus Xnova Studio COB Array

Model names

- ☑ CVM-18

Mounting

- ☑ With Zhaga Book 3 LED holder
BJB spotlight connector 47.319.2281
Ideal Industries Chip-Lok™ holder 50-2102SL
Mounting with 2 self tapping screws M3 x 6mm
Green indicator marks



Luminus Xnova COB Array

Model names

- ☑ CLM-22
- ☑ CXM-22

Mounting

- ☑ Direct mounting with 2 self tapping screws M3 x 6mm
Blue indicator marks
- ☑ With Zhaga Book 3 LED holder
BJB spotlight connector 47.319.2033
Ideal Industries Chip-Lok™ holder 50-2204CT
TE Connectivity Lumawise type Z50 2213480-1
Mounting with 2 self tapping screws M3 x 6mm
Green indicator marks