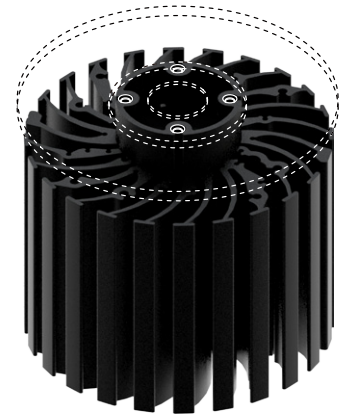




Driver Box Connector ring - Spacer between driver and LED cooler

Features & Benefits

- The connector ring creates an ideal bridge between any driver box in the market and our high bay coolers to allow free air convection.
- Dedicated mounting holes with MechaTronix ModuLED Mega-HBG, ModuLED Giga-HBG, CoolBay® Giga, CoolBay® Tera high bay LED coolers.
- This connector ring is not needed when you use the CoolBox driver box since the elevation is already foreseen in the design.



Product Details

Model n°	Driver box connector ring
Dimension (mm)	ø55 x 20(H)
Weight (gr)	37
Material	AL-6063

Notes:

- MechaTronix reserves the right to change products or specifications without prior notice.
- Mentioned models are an extraction of full product range.
- For specific mechanical adaptations please contact MechaTronix.



Driver Box Connector ring - Spacer between driver and LED cooler

Mounting Instructions



MechaTronix was formed in 2007, comprised of five already successful manufacturing companies, with each of them in excess of a decade of continuous operation. MechaTronix provides a wide variety of mechanical and electromechanical parts as well as assemblies for the international Original Equipment Manufacturers market.

Mounting indicator marks overview on MTX High Bay LED Coolers

Keep in mind to keep a gap at least 10mm between the LED cooler and the driver to allow free air convection - this can be obtained with spacers or with the MTX dedicated mounting options.



ModuLED Mega-HBG
 Top - Driver side



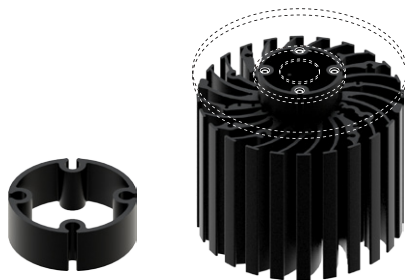
ModuLED Giga-HBG
 Top - Driver side



CoolBay® Giga
 Top - Driver side



CoolBay® Tera
 Top - Driver side



MechaTronix driver box connector ring

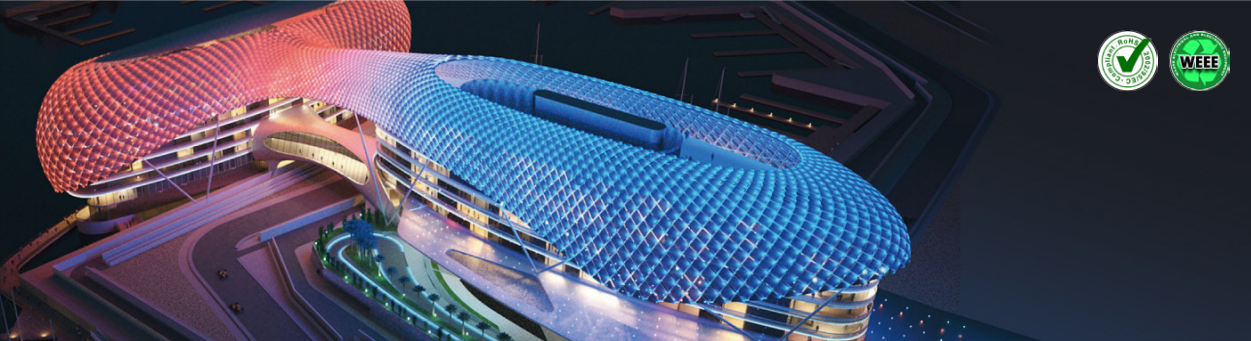
The driver box connector ring guarantees you the ideal space between the ModuLED LED cooler and your external driver box. With its open structure and aluminium conductivity, this is the ideal bridge between any driver box in the market and our high bay coolers.

Model Names

- Driver box connector ring

Mounting

- Direct mounting on the LED cooler with 4 screws M5 x 30mm
- Orange indicator marks



Driver Box Connector ring - Spacer between driver and LED cooler

Drawings & Dimensions

