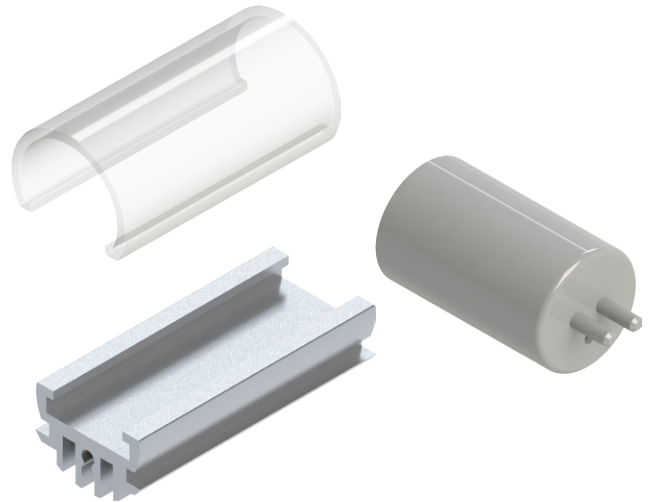


## LBP10 LED Bar Profile for 10mm Strip or PCB

### Features & Benefits

- LED Bar Profile for LED strips and linear profile LED lighting with maximum width 10mm.
- Extruded from highly conductive aluminium AL-6063 T5. Clear anodise finishing - other colours on request.
- Standard lengths T5/T6, 528.6mm and 1128.6mm without MOQ. Other lengths possible with MOQ of 1000pcs.
- Optional lens cover LBP10COV with standard transparency 80%. Made from PC-94V2 up to 125°C. UL and SGS approved.
- Optional end caps for replacement fittings LBP10CAP.



### Order Information

#### Remarks:

Maximum extrusion lengths for LED Bar Profile and lens cover 2000mm due to transportation limitations

Available optional anodizing colours: black - blue

In house afterwork with CNC possible

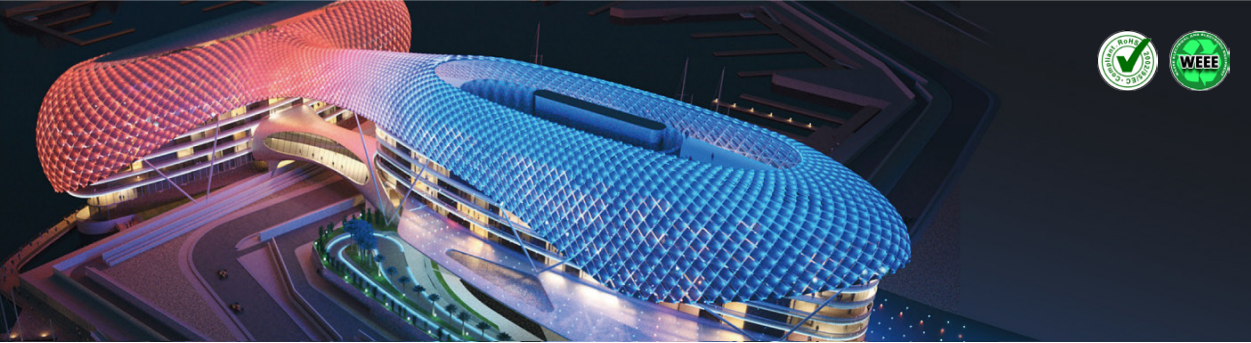
Painting in any RAL/Pantone colours available

For different transparency of lens cover: MOQ 1000pcs  
For different colouring of end caps: MOQ 2000pcs

Example : LBP10EXT-528

LBP10 **1** - **2**

- 1** EXT = extruded LED Bar Profile  
Width 13.37mm - Height 8.91mm  
For LED strip or PCB cooling  
PCB width 10mm max, height 1.6mm max  
  
COV = Lens Cover standard transparency 80%  
CAP = End cap (1pc) for replacement fitting
- 2** LED Bar Profile length (mm)  
Standard lengths:  
528.6mm (T5)  
1128.6mm (T6)  
Other lengths on request with MOQ of 1000pcs



## LBP10 LED Bar Profile for 10mm Strip or PCB

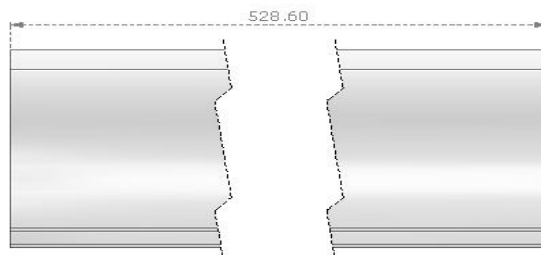
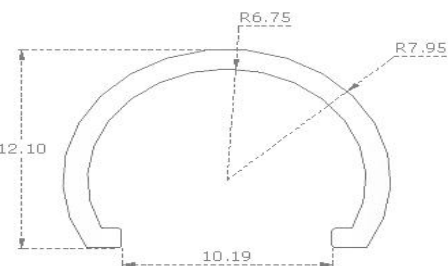
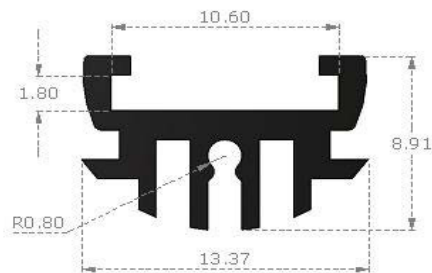
### Product Details

	Total Height <sup>mm</sup>	Volume <sup>mm<sup>3</sup></sup>	Cooling Surface <sup>mm<sup>2</sup></sup>	Weight <sup>gr</sup>	PCB Width <sup>mm<sup>2</sup></sup>	PCB Height <sup>mm<sup>2</sup></sup>	Material
<b>LBP10EXT-528</b>	8.91	24534.91	43423.72	66.24	10	1.6	AL-6063 T5
<b>LBP10EXT-1128</b>	8.91	52415.5	92663.24	141.52	10	1.6	AL-6063 T5
<b>LBP10COV-528</b>	12.1	N/A	N/A	22.48	N/A	N/A	PC-94V2
<b>LBP10COV-1128</b>	12.1	N/A	N/A	48.02	N/A	N/A	PC-94V2
<b>LBP10CAP</b>	18.3	N/A	N/A	N/A	N/A	N/A	PC/ABS-94V0

#### Notes:

1. MechaTronix reserves the right to change products or specifications without prior notice.
2. Mentioned models are an extraction of the full product range.  
For specific mechanical adaptations please contact MechaTronix.
3. All these types are made by extrusion process from highly conductive aluminum type AL6063 T5 with a typical Thermal Conductivity of 209W/m-K.

### Drawings & Dimensions



#### Example : LBP10EXT-528

Unit: mm

