



ø99 x H75 (mm)
 Rth 0.25 °C/W
 Power Pd 200 W

[MORE PRODUCT DETAILS](#)

IceLED Xtra Ultra | Bridgelux Modular Active Star LED Cooler ø99mm

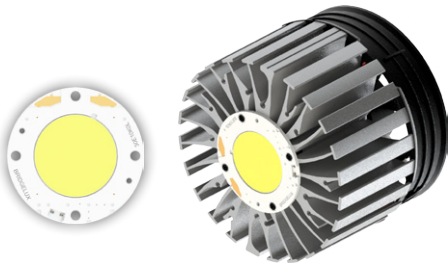
Mounting Instruction



Bridgelux is a leading provider of high power, cost effective and energy efficient light emitting diode (LED) solutions. Leveraging patented light source technology, Bridgelux LED Arrays replace traditional technologies (such as incandescent, halogen, fluorescent and high intensity discharge lighting) with integrated solid state light sources enabling high performance and energy-efficient products for the general lighting market.

Mounting indicator marks overview

MechaTronix recommends the use of a high thermal conductive interface between the LED module and the LED cooler. Either thermal grease, a thermal pad or a phase change thermal pad thickness 0.1-0.15mm is recommended. Thermal pads or phase change thermal pads can be pre-applied from MechaTronix.



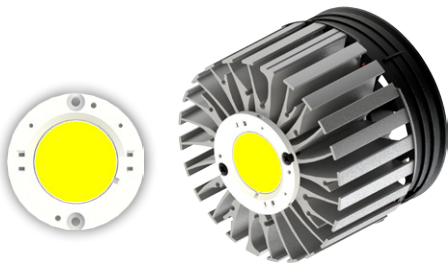
Bridgelux Gen 7 Vero 29 / Décor Vero 29 LED Array

Model names

- BXRC-xxx10Kx-x-7x

Mounting

- Direct mounting with 4 self tapping screws M3 x 6mm
- Blue indicator marks



Bridgelux Vero SE 29 & Décor Vero SE 29 LED Array

Model names

- BXRC-xxx10Kx-x-7x-SE

Mounting

- Direct mounting with 2 self tapping screws M3 x 6mm
- Blue indicator marks