

ø99 x H55 (mm)  
 Rth 0.46 °C/W  
 Power Pd 109 W

**MORE PRODUCT DETAILS**

## IceLED Xtra | Prolight Opto Modular Active Star LED Cooler ø99mm

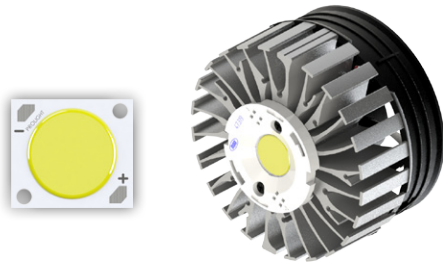
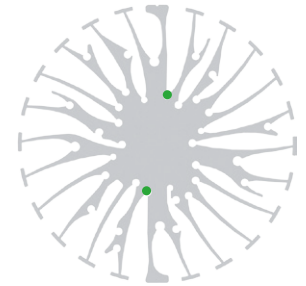
### Mounting Instruction



Founded in October 2004, Prolight Opto Technology Corporation is a professional manufacturer of LED packaging, dedicated to the research, development, and manufacturing of mid-to-high-power, high reliability LED packages. Prolight Opto continually invests over 6% of sales revenue in R&D and patents. With own package patents from the US and Taiwan they insure a wide range of LED emitters in the smallest foot prints and COB LED modules with perfect thermal management and high density lumen output.

#### Mounting indicator marks overview

MechaTronix recommends the use of a high thermal conductive interface between the LED module and the LED cooler. Either thermal grease, a thermal pad or a phase change thermal pad thickness 0.1-0.15mm is recommended. Thermal pads or phase change thermal pads can be pre-applied from MechaTronix.



#### Prolight Opto BI series PABA COB

##### Model names

- PABA-22xxx-xxxx
- PABA-26xxx-xxxx
- PABA-35xxx-xxxx
- PABA-50xxx-xxxx

##### Mounting

- With Zhaga Book 3 LED holder
- BJB spotlight connector 47.319.2040
- Mounting with 2 self tapping screws M3 x 6mm
- Green indicator marks



#### Prolight Opto CF series PACF COB

##### Model names

- PACF-57xxx-xxxx

##### Mounting

- With Zhaga Book 3 LED holder
- BJB Spotlight connector 47.319.2021
- TE Connectivity Lumawise type Z50 2213254-1
- TE Connectivity Lumawise type Z50 2213254-2
- Mounting with 2 self tapping screws M3 x 6mm
- Green indicator marks



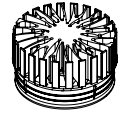
#### Prolight Opto CG series PACG COB

##### Model names

- PACG-110xxx-xxxx

##### Mounting

- With Zhaga Book 3 LED holder
- BJB Spotlight connector 47.319.2033
- Mounting with 2 self tapping screws M3 x 6mm
- Green indicator marks



ø99 x H55 (mm)  
Rth 0.46 °C/W  
Power Pd 109 W

[MORE PRODUCT DETAILS](#)

## IceLED Xtra | Prolight Opto Modular Active Star LED Cooler ø99mm

### Mounting Instruction



#### Prolight Opto CIII series PACD COB

##### Model names

- PACD-40xxx-xxxx

##### Mounting

- With Zhaga Book 3 LED holder  
BJB Spotlight connector 47.319.2033  
Mounting with 2 self tapping screws M3 x 6mm  
Green indicator marks