

ø99 x H75 (mm)
Rth 0.25 °C/W
Power Pd 200 W

[MORE PRODUCT DETAILS](#)

IceLED Ultra VS | Vossloh Schwabe Modular Active Star LED Cooler ø99mm

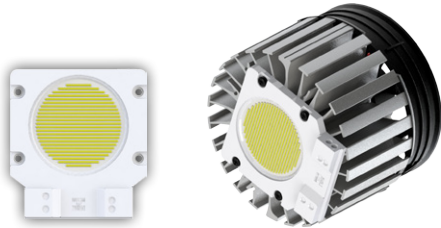
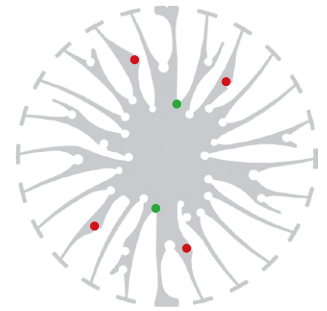
Mounting Instruction



Headquartered in Germany, VosslohSchwabe counts as a technology leader within the lighting sector. Top quality, high-performance products form the basis of the company's success. Panasonic employs 367,000 members of staff with an annual turnover of 76.75 billion Euros (8692.7 billion yen) and is represented throughout the world by more than 634 companies or representations in Asia, America and Europe. The Vossloh Schwabe Luga Shop LED modules are ideal solution for high-end luminaire designs where quality stands at the first place.

Mounting indicator marks overview

MechaTronix recommends the use of a high thermal conductive interface between the LED module and the LED cooler. Either thermal grease, a thermal pad or a phase change thermal pad thickness 0.1-0.15mm is recommended. Thermal pads or phase change thermal pads can be pre-applied from MechaTronix.



Luga Industrial LED modules

Model names

- WU-M-467 / WU-M-443

Mounting

- Direct mounting with 4 self tapping screws M3 x 10mm
- Red indicator marks



Luga Shop 2014 LED modules

Model names

- WU-M-485 / WU-M-462
- WU-M-486 / WU-M-464

Mounting

- Direct mounting with 2 self tapping screws M3 x 10mm
- Green indicator marks