

ø99 x H75 (mm)
Rth 0.25 °C/W
Power Pd 200 W

[MORE PRODUCT DETAILS](#)

IceLED Ultra | Prolight Opto Modular Active Star LED Cooler ø99mm

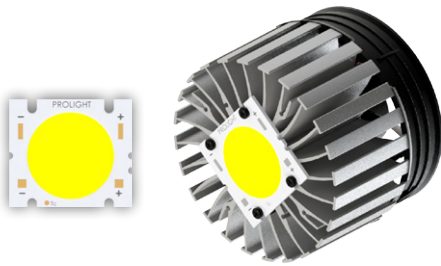
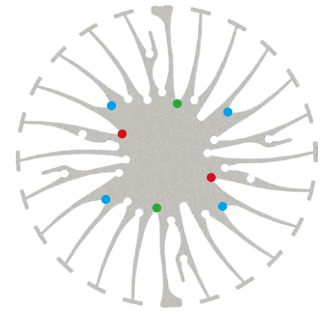
Mounting Instruction



Founded in October 2004, Prolight Opto Technology Corporation is a professional manufacturer of LED packaging, dedicated to the research, development, and manufacturing of mid-to-high-power, high reliability LED packages. Prolight Opto continually invests over 6% of sales revenue in R&D and patents. With own package patents from the US and Taiwan they insure a wide range of LED emitters in the smallest foot prints and COB LED modules with perfect thermal management and high density lumen output.

Mounting indicator marks overview

MechaTronix recommends the use of a high thermal conductive interface between the LED module and the LED cooler. Either thermal grease, a thermal pad or a phase change thermal pad thickness 0.1-0.15mm is recommended. Thermal pads or phase change thermal pads can be pre-applied from MechaTronix.



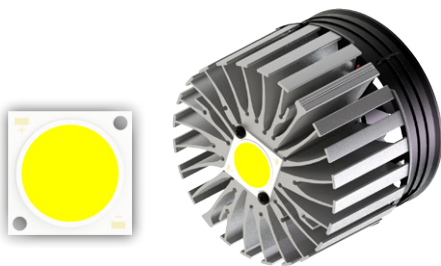
Prolight Opto BII series PABB COB

Model names

- PABB-65xxx-xxxx
- PABB-100xxx-xxxx
- PABB-200xxx-xxxx

Mounting

- Direct mounting with 4 self tapping screws M3 x 6mm
- Blue indicator marks



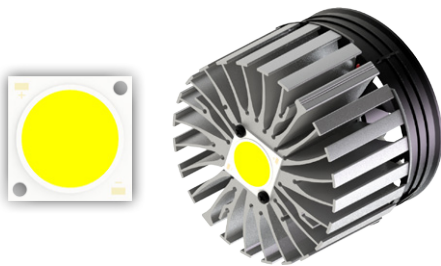
Prolight Opto CG series PACG COB

Model names

- PACG-110xxx-xxxx

Mounting

- Direct mounting with 2 self tapping screws M3 x 6mm
- Red indicator marks
- With Zhaga Book 3 LED holder
- BJB Spotlight connector 47.319.2033
- Mounting with 2 self tapping screws M3 x 8mm
- Green indicator marks



Prolight Opto CIII series PACD COB

Model names

- PACD-40xxx-xxxx

Mounting

- Direct mounting with 2 self tapping screws M3 x 6mm
- Red indicator marks
- With Zhaga Book 3 LED holder
- BJB Spotlight connector 47.319.2033
- Mounting with 2 self tapping screws M3 x 8mm
- Green indicator marks