

ø99 x H75 (mm)
 Rth 0.25 °C/W
 Power Pd 200 W

[MORE PRODUCT DETAILS](#)

IceLED Ultra | Citizen Modular Active Star LED Cooler ø99mm

Mounting Instruction

CITIZEN

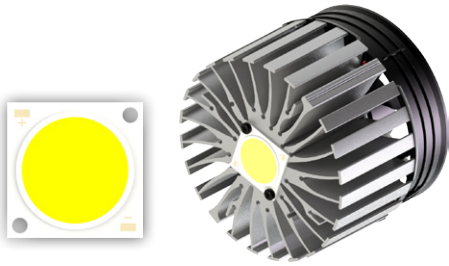
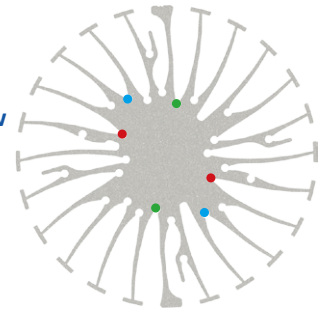
Micro HumanTech

Citizen Electronics Co., Ltd. is a precision electronics manufacturer with headquarters in Fujiyoshida City, Yamanash Japan. Prefecture and a subsidiary of Citizen Holdings Co., Ltd. Citizen Electronics is a leader in LED light sources for electronic devices and high power white LED lamps.

The second generation CILED CLL LED COB modules and the new upcoming generation CLU distinguish themselves through the combination of high lumen per watt performance combined with a perfect light quality control.

Mounting indicator marks overview

MechaTronix recommends the use of a high thermal conductive interface between the LED module and the LED cooler. Either thermal grease, a thermal pad or a phase change thermal pad thickness 0.1-0.15mm is recommended. Thermal pads or phase change thermal pads can be pre-applied from MechaTronix.



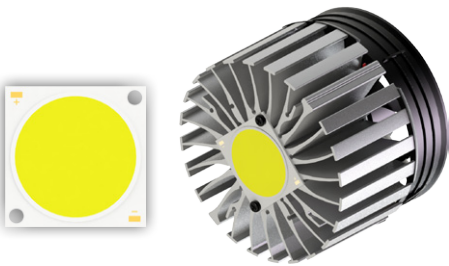
Citizen Cited COB CLU048

Model names

- CLU048-xxxxxx

Mounting

- Direct mounting with 2 self tapping screws M3 x 6mm
Red indicator marks
- With Zhaga Book 3 LED holder
BJB spotlight connector 47.319.2033
Ideal Industries Chip-Lok™ holder 50-2204CT
Mounting with 2 self tapping screws M3 x 6mm
Green indicator marks



Citizen Cited COB CLU058

Model names

- CLU058-xxxxxx

Mounting

- Direct mounting with 2 self tapping screws M3 x 6mm
Blue indicator marks