



IceLED



ø99 x H45 / 55 (mm)
 Rth 0.58 - 0.46 °C/W
 Power Pd 85.5 - 109 W

[MORE PRODUCT DETAILS](#)

IceLED | Tridonic Talexx Modular Active Star LED Cooler ø99mm

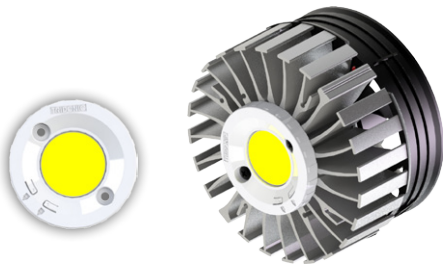
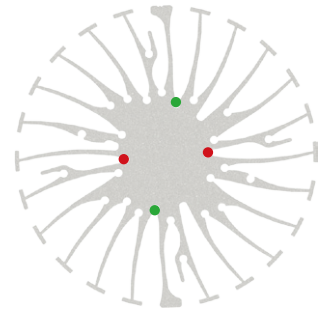
Mounting Instruction

TRIDONIC

With the TALEXX LED products Tridonic gives you the confidence that your chosen lighting solution will give you precisely the results you want. Thanks to Tridonic's many years of experience in product development they have been able to raise the quality of light from their LEDs to new levels. The production series have an exceptionally constant light color so they guarantee a uniform and crystal clear color appearance. In addition to high efficiency and balanced distribution of light Tridonic offers you impressive robustness in the latest generation of their products and the resultant long life will save you maintenance and repair costs.

Mounting indicator marks overview

MechaTronix recommends the use of a high thermal conductive interface between the LED module and the LED cooler. Either thermal grease, a thermal pad or a phase change thermal pad thickness 0.1-0.15mm is recommended. Thermal pads or phase change thermal pads can be pre-applied from MechaTronix.



TALEXX Stark SLE GEN3 19 - 23 Select / Classic / Food / Art

Model names

- STARK-SLE-G3-19-xxx
- STARK-SLE-G3-23-xxx

Mounting

- Direct mounting with 2 self tapping screws M3 x 8mm
- Green indicator marks



TALEXX Stark SLE GEN3 Mini LES-17 Select / Classic / Art

Model names

- STARK-SLE-PURE-G3-17-xxx

Mounting

- Direct mounting with 2 self tapping screws M3 x 6mm
- Red indicator marks
- With Zhaga Book 3 LED holder
- BJB Spotlight connector 47.319.2021
- Mounting with 2 self tapping screws M3 x 8mm
- Green indicator marks



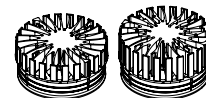
TALEXXmodule SLE GEN4 19mm - 23mm Excite / Advanced

Model names

- SLE G4 19mm 3000lm xxx x EXC/ADV
- SLE G4 23mm 5000lm xxx x EXC/ADV

Mounting

- Direct mounting with 2 self tapping screws M3 x 8mm
- Green indicator marks

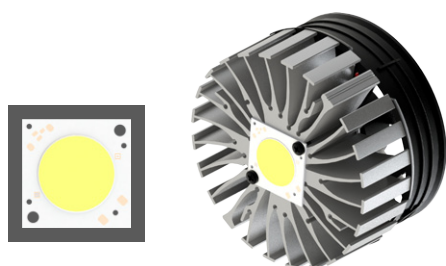


ø99 x H45 / 55 (mm)
Rth 0.58 - 0.46 °C/W
Power Pd 85.5 - 109 W

[MORE PRODUCT DETAILS](#)

IceLED | Tridonic Talexx Modular Active Star LED Cooler ø99mm

Mounting Instruction



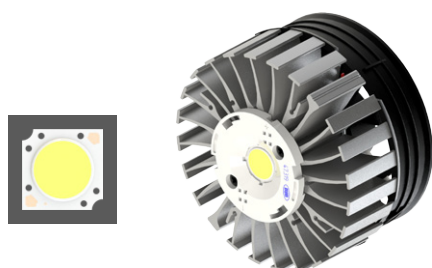
TALEXXmodule SLE GEN4 23mm Essence

Model names

- ☑ SLE G4 23mm 5000lm xxx R SNC

Mounting

- ☑ Direct mounting with 2 self tapping screws M3 x 8mm
Green indicator marks



TALEXXmodule SLE GEN5 15mm Excite / Advanced

Model names

- ☑ SLE G5 15mm 5000lm xxx x
EXC/ADV

Mounting

- ☑ With Zhaga Book 3 LED holder
BJB Spotlight connector 47.319.2021
Ideal Industries Chip-Lok™ holder 50-2103CT
TE Connectivity Lumawise type Z50 2213254-1
TE Connectivity Lumawise type Z50 2213254-2
Mounting with 2 self tapping screws M3 x 8mm
Green indicator marks



TALEXXmodule SLE GEN5 23mm Excite / Advanced

Model names

- ☑ SLE G5 23mm 6000lm xxx x
EXC/ADV

Mounting

- ☑ Direct mounting with 2 self tapping screws M3 x 8mm
Green indicator marks