



IceLED



ø99 x H45 / 55 (mm)
Rth 0.58 - 0.46 °C/W
Power Pd 85.5 - 109 W

[MORE PRODUCT DETAILS](#)

IceLED | Prolight Opto Modular Active Star LED Cooler ø99mm

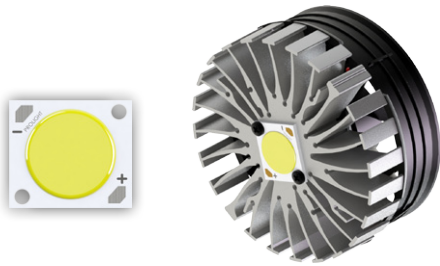
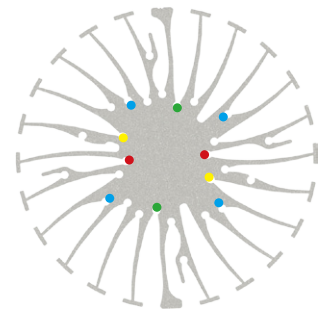
Mounting Instruction



Founded in October 2004, Prolight Opto Technology Corporation is a professional manufacturer of LED packaging, dedicated to the research, development, and manufacturing of mid-to-high-power, high reliability LED packages. Prolight Opto continually invests over 6% of sales revenue in R&D and patents. With own package patents from the US and Taiwan they insure a wide range of LED emitters in the smallest foot prints and COB LED modules with perfect thermal management and high density lumen output.

Mounting indicator marks overview

MechaTronix recommends the use of a high thermal conductive interface between the LED module and the LED cooler. Either thermal grease, a thermal pad or a phase change thermal pad thickness 0.1-0.15mm is recommended. Thermal pads or phase change thermal pads can be pre-applied from MechaTronix.



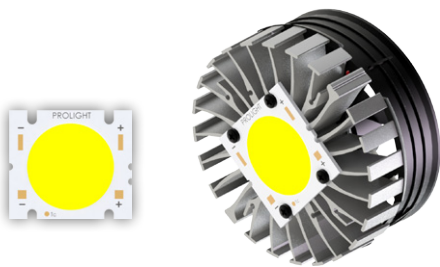
Prolight Opto BI series PABA COB

Model names

- PABA-22xxx-xxxx
- PABA-26xxx-xxxx
- PABA-35xxx-xxxx
- PABA-50xxx-xxxx

Mounting

- Direct mounting with 2 self tapping screws M3 x 6mm
Red indicator marks
- With Zhaga Book 3 LED holder
BJB spotlight connector 47.319.2040
Mounting with 2 self tapping screws M3 x 8mm
Green indicator marks



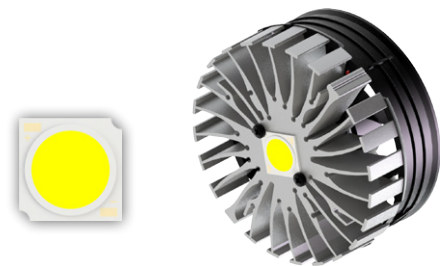
Prolight Opto BII series PABB COB

Model names

- PABB-65xxx-xxxx
- PABB-100xxx-xxxx
- PABB-200xxx-xxxx

Mounting

- Direct mounting with 4 self tapping screws M3 x 6mm
Blue indicator marks



Prolight Opto CF series PACF COB

Model names

- PACF-57xxx-xxxx

Mounting

- Direct mounting with 2 self tapping screws M3 x 6mm
Red indicator marks
- With Zhaga Book 3 LED holder
BJB Spotlight connector 47.319.2021
TE Connectivity Lumawise type Z50 2213254-1
TE Connectivity Lumawise type Z50 2213254-2
Mounting with 2 self tapping screws M3 x 6mm
Green indicator marks



IceLED

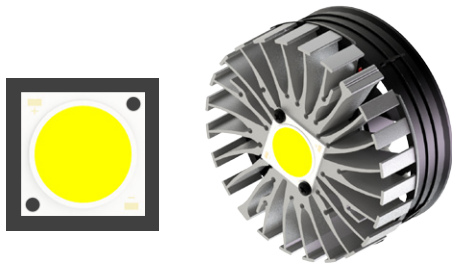


ø99 x H45 / 55 (mm)
Rth 0.58 - 0.46 °C/W
Power Pd 85.5 - 109 W

[MORE PRODUCT DETAILS](#)

IceLED | Prolight Opto Modular Active Star LED Cooler ø99mm

Mounting Instruction



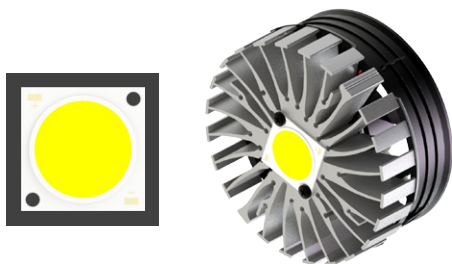
Prolight Opto CG series PACG COB

Model names

- ▣ PACG-110xxx-xxxx

Mounting

- ▣ Direct mounting with 2 self tapping screws M3 x 6mm
Yellow indicator marks
- ▣ With Zhaga Book 3 LED holder
BJB Spotlight connector 47.319.2033
Mounting with 2 self tapping screws M3 x 8mm
Green indicator marks



Prolight Opto CIII series PACD COB

Model names

- ▣ PACD-40xxx-xxxx

Mounting

- ▣ Direct mounting with 2 self tapping screws M3 x 6mm
Yellow indicator marks
- ▣ With Zhaga Book 3 LED holder
BJB Spotlight connector 47.319.2033
Mounting with 2 self tapping screws M3 x 8mm
Green indicator marks