

ø86 x H30 / 60 (mm)  
Rth 2.08 - 1.56 °C/W  
Power Pd 24 - 32 W

[MORE PRODUCT DETAILS](#)

## CoolStar® 86 Designer series Vossloh Schwabe LED Star Cooler ø86mm

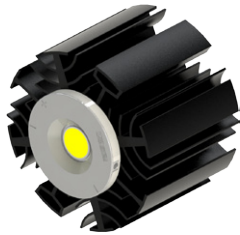
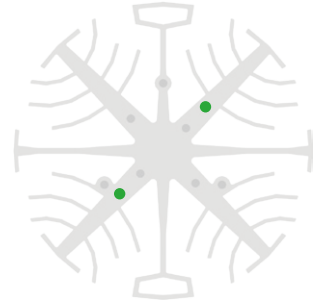
### Mounting Instruction



Headquartered in Germany, VosslohSchwabe counts as a technology leader within the lighting sector. Top quality, high-performance products form the basis of the company's success. Panasonic employs 367,000 members of staff with an annual turnover of 76.75 billion Euros (8692.7 billion yen) and is represented throughout the world by more than 634 companies or representations in Asia, America and Europe. The Vossloh Schwabe Luga Shop LED modules are ideal solution for high-end luminaire designs where quality stands at the first place.

#### Mounting indicator marks overview

MechaTronix recommends the use of a high thermal conductive interface between the LED module and the LED cooler. Either thermal grease, a thermal pad or a phase change thermal pad thickness 0.1-0.15mm is recommended. Thermal pads or phase change thermal pads can be pre-applied from MechaTronix.



#### LUGA Shop Gen 6 LED COB

##### Model names

- DMS125xxxH
- DMS126xxxH
- DMS128xxxH

##### Mounting

- With Luga Shop Kit holder 564174 / 564170
- Mounting with 2 screws M3 x 6mm
- Green indicator marks