

ø86 x H30 / 60 (mm)
Rth 2.08 - 1.56 °C/W
Power Pd 24 - 32 W

[MORE PRODUCT DETAILS](#)

CoolStar® 86 Designer series Seoul Semiconductor LED Star Cooler ø86mm

Mounting Instruction

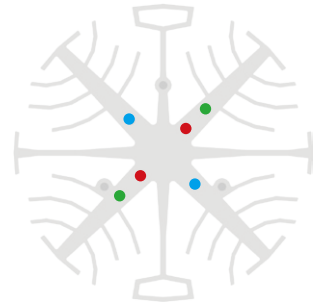


SEOUL SEMICONDUCTOR

The new Seoul Semiconductor ZC series Chip-On-Board (COB) LED Arrays offer high lumen density and efficacies of up to 140lm/W in a single, easy-to-use LED component family. Available in all major color temperatures from 2700K up to 6000K, these high flux packages deliver system level performance of 700 lumens to over 6,000 lumens. The new ZC series family is available in a single 3-step MacAdam Ellipse binning, ensuring excellent color consistency with minimum CRI options of 70, and 80 combining high quality of light with high efficacy.

Mounting indicator marks overview

MechaTronix recommends the use of a high thermal conductive interface between the LED module and the LED cooler. Either thermal grease, a thermal pad or a phase change thermal pad thickness 0.1-0.15mm is recommended. Thermal pads or phase change thermal pads can be pre-applied from MechaTronix.



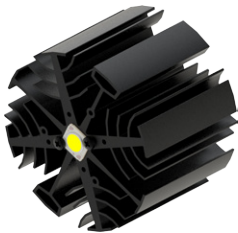
Seoul Semiconductor Acrich MJT COB 13.5x13.5mm

Model names

- SAWx0661A
- SAWx1062A
- SAWx1063A

Mounting

- Direct mounting with 2 screws M3 x 6mm
Red indicator marks
- With Zhaga Book 3 LED holder
BJB Spotlight connector 47.319.2021
Ideal Industries Chip-Lok™ holder 50-2103CT
TE Connectivity Lumawise type Z50 2213254-1
TE Connectivity Lumawise type Z50 2213254-2
Mounting with 2 screws M3 x 6mm
Green indicator marks



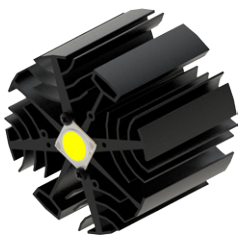
Seoul Semiconductor Acrich MJT COB 19x19mm

Model names

- SAWx1564A
- SAWx1565A
- SAWx1566A

Mounting

- Direct mounting with 2 screws M3 x 6mm
Blue indicator marks
- With Zhaga Book 3 LED holder
BJB Spotlight connector 47.319.2025
Ledil HEKLA solderless connector FP15949_HEKLA-I
Mounting with 2 self tapping screws M3 x 6mm
Green indicator marks



Seoul Semiconductor Acrich MJT COB 28x28mm

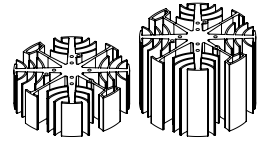
Model names

- SAWx22AAA
- SAWx2296A
- SAWx2298A

Mounting

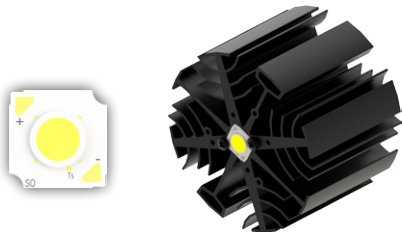
- With Zhaga Book 3 LED holder
BJB Spotlight connector 47.319.2314
Bender+Wirth 431 Typ 2
Mounting with 2 self tapping screws M3 x 6mm
Green indicator marks





CoolStar® 86 Designer series Seoul Semiconductor LED Star Cooler ø86mm

Mounting Instruction



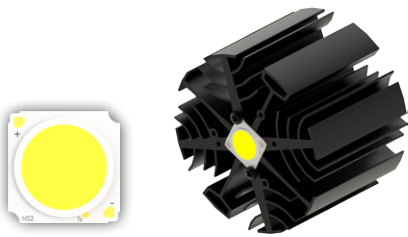
Seoul Semiconductor Acrich MJT SunLike COB 13.5x13.5mm

Model names

- SAWS0661A
- SAWS1063A

Mounting

- Direct mounting with 2 screws M3 x 6mm
- Red indicator marks



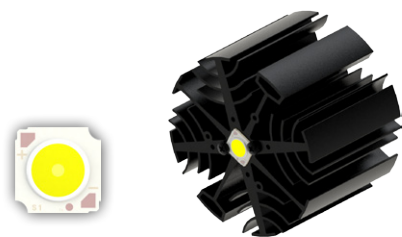
Seoul Semiconductor Acrich MJT SunLike COB 19x19mm

Model names

- SAWS1564A
- SAWS1566A

Mounting

- Direct mounting with 2 screws M3 x 6mm
- Blue indicator marks
- With Zhaga Book 3 LED holder
- BJB Spotlight connector 47.319.2025
- Ideal Industries Chip-Lok™ holder 50-2103CT
- Mounting with 2 screws M3 x 6mm
- Green indicator marks



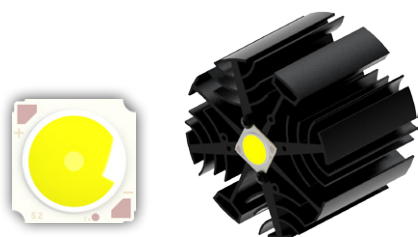
Seoul Semiconductor ZC4 / ZC6 Z-Power COB

Model names

- SDW81F1DY
- SDWx1F1B
- SDWx1F1C

Mounting

- Direct mounting with 2 screws M3 x 6mm
- Red indicator marks
- With Zhaga Book 3 LED holder
- Ledil HEKLA solderless connector FP15501_HEKLA-C
- Mounting with 2 screws M3 x 6mm
- Green indicator marks



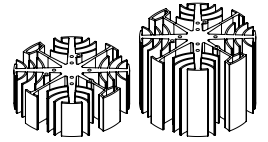
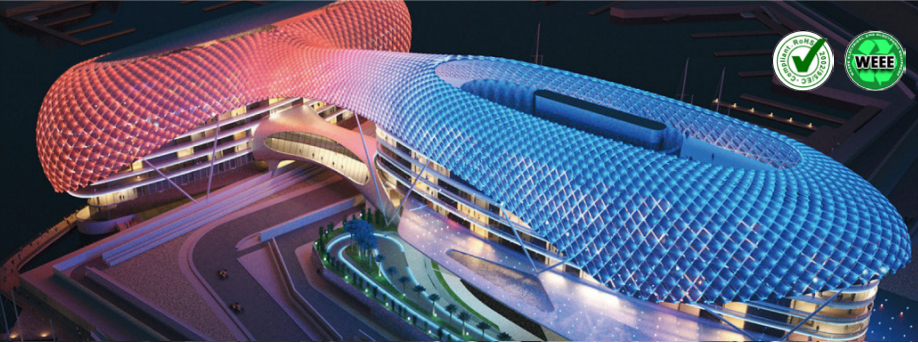
Seoul Semiconductor ZC 12 / ZC 18 LED COB

Model names

- SDWx2F1C
- SDWx3F1C

Mounting

- Direct mounting with 2 screws M3 x 6mm
- Blue indicator marks
- With Zhaga Book 3 LED holder
- BJB Spotlight connector 47.319.2021
- BJB Spotlight connector 47.319.2025
- Ideal Industries Chip-Lok™ holder 50-2103CT
- Ledil HEKLA solderless connector FP15949_HEKLA-I
- TE Connectivity Lumawise type Z50 2213254
- Mounting with 2 screws M3 x 6mm
- Green indicator marks



ø86 x H30 / 60 (mm)
Rth 2.08 - 1.56 °C/W
Power Pd 24 - 32 W

[MORE PRODUCT DETAILS](#)

CoolStar® 86 Designer series Seoul Semiconductor LED Star Cooler ø86mm

Mounting Instruction



Seoul Semiconductor ZC 25 / ZC 40 LED COB

Model names

- SDWx4F1C
- SDWx4F1C

Mounting

- With Zhaga Book 3 LED holder
- BJB Spotlight connector 47.319.2033
- Ideal Industries Chip-Lok™ holder 50-2204CT
- Mounting with 2 self tapping screws M3 x 6mm
- Green indicator marks