

ø86 x H30 / 60 (mm)
Rth 2.08 - 1.56 °C/W
Power Pd 24 - 32 W

[MORE PRODUCT DETAILS](#)

CoolStar® 86 Designer series LG Innotek LED Star Cooler ø86mm

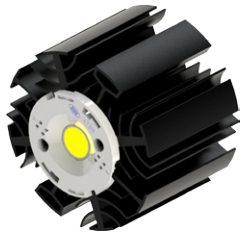
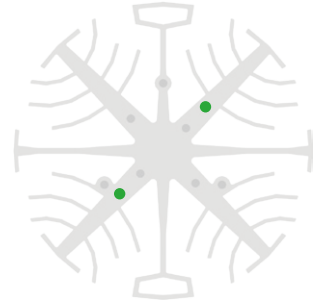
Mounting Instruction



LG Innotek is a global specialized material and component manufacturer who is making a better world through cutting edge core component technology that is leading the market and opening a smarter future through the development of new eco-friendly materials. With the world's highest production capacity as a single factory and a solid LED business base built over more than a decade, LG Innotek's Paju LED factory produces 2 billion chips a month. Their LEMWM COB LED modules deliver a perfect lumen per watt ratio in an uncompromised lighting quality.

Mounting indicator marks overview

MechaTronix recommends the use of a high thermal conductive interface between the LED module and the LED cooler. Either thermal grease, a thermal pad or a phase change thermal pad thickness 0.1-0.15mm is recommended. Thermal pads or phase change thermal pads can be pre-applied from MechaTronix.



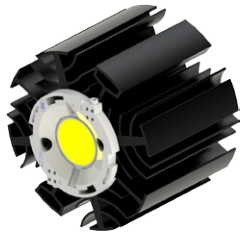
LG LEMWM18 10W/13W/17W/24W COB

Model names

- LEMWM18580xxxx
- LEMWM18680xxxx
- LEMWM18780xxxx
- LEMWM18880xxxx

Mounting

- With Zhaga Book 3 LED holder
- BJB Spotlight connector 47.319.2080
- Ideal Industries Chip-Lok™ holder 50-2100LG
- Mounting with 2 screws M3 x 8mm
- Green indicator marks



LG LEMWM28 COB

Model names

- LEMWM28xxxx

Mounting

- With Zhaga Book 3 LED holder
- BJB Spotlight connector 47.319.2033
- Ideal Industries Chip-Lok™ holder 50-2204CT
- Mounting with 2 screws M3 x 6mm
- Green indicator marks