

## CoolStar® 67 Designer series Osram Soleriq LED Star Cooler ø67mm

### Mounting Instruction

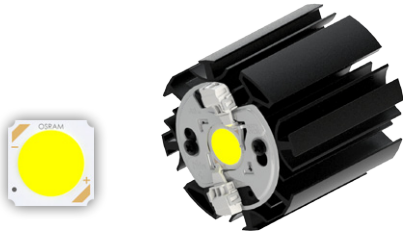
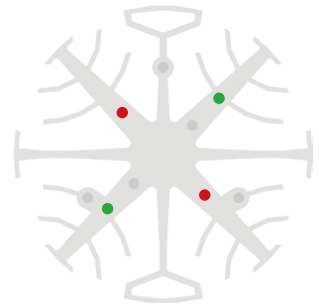
**OSRAM**  
Opto Semiconductors

**LED** Light for you  
powered by OSRAM  
CERTIFIED PARTNER

Osram SOLERIQ® LEDs are designed to meet the requirements of professional indoor general lighting applications. Large flux output, small light emitting surfaces, variation, CRI greater than 80 and easy to use Chip-on-Board technology support easy and creative lighting design. These properties make SOLERIQ® LED COB modules a high efficient, high-quality and price-performance-optimized solution for all demanding and at the same time cost-conscious lighting manufactures and designers.

#### Mounting indicator marks overview

MechaTronix recommends the use of a high thermal conductive interface between the LED module and the LED cooler. Either thermal grease, a thermal pad or a phase change thermal pad thickness 0.1-0.15mm is recommended. Thermal pads or phase change thermal pads can be pre-applied from MechaTronix.



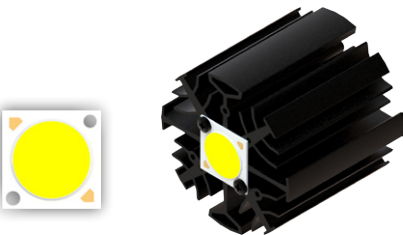
#### Osram Soleriq S13 LED COB

##### Model names

- GW-KAGHB1.-xxxx

##### Mounting

- With Zhaga Book 3 LED holder  
Ideal Industries Chip-Lok™ holder 50-2101CR  
TE Connectivity Lumawise type Z50 2213401-1  
TE Connectivity Lumawise type Z50 2213401-2  
Mounting with 2 screws M3 x 8mm  
Green indicator marks



#### Osram Soleriq S19 LED COB

##### Model names

- GW-KAHLB1.-xxxx

##### Mounting

- Direct mounting with 2 screws M3 x 6mm  
Red indicator marks
- With Zhaga Book 3 LED holder  
BJB spotlight connector 47.319.2170  
TE Connectivity Lumawise type Z50 2213407-1  
TE Connectivity Lumawise type Z50 2213407-2  
Mounting with 2 screws M3 x 6mm  
Green indicator marks