

ø67 x H30 / 60 (mm)
 Rth 3.13 - 2.27 °C/W
 Power Pd 16 - 22 W

MORE PRODUCT DETAILS

CoolStar® 67 Designer series Edison Opto LED Star Cooler ø67mm

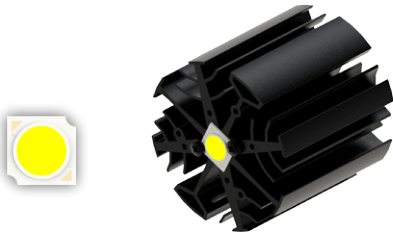
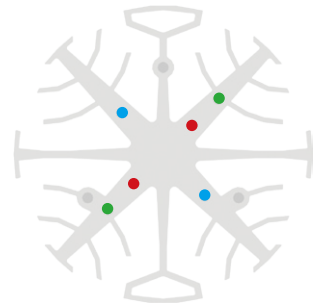
Mounting Instruction



Edison Opto with headquarters in Chung-Ho Dist, New Taipei City, Taiwan is a professional LED manufacture with specializes in designing and producing High-power LEDs, solid state lighting applications, LED sensors and SPDIFs. In response to rapid growth of capacity demand, Edison Opto has established factories in Dongguan and Yangzhou China and subsidiaries in USA and Germany. Edison Opto COB LED modules outstand in light quality and are available in the broadest lumen and CRI range available on the market.

Mounting indicator marks overview

MechaTronix recommends the use of a high thermal conductive interface between the LED module and the LED cooler. Either thermal grease, a thermal pad or a phase change thermal pad thickness 0.1-0.15mm is recommended. Thermal pads or phase change thermal pads can be pre-applied from MechaTronix.



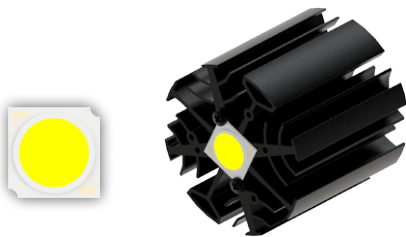
Edison Opto EdiPower III HM series

Model Names 5W - 13W

- 2PHM05xxxx
- 2PHM09xxxx
- 2PHM13xxxx

Mounting

- Direct mounting with 2 screws M3 x 6mm
 Red indicator marks



Edison Opto EdiPower III HM series

Model Names 16W - 30W

- 2PHM16xxxx
- 2PHM24xxxx
- 2PHM30xxxx

Mounting

- Direct mounting with 2 screws M3 x 6mm
 Blue indicator marks
- With Zhaga Book 3 LED holder
 BJB Spotlight connector 47.319.2021
 Ideal Industries Chip-Lok™ holder 50-2103CT
 TE Connectivity Lumawise type Z50 2213254-1
 TE Connectivity Lumawise type Z50 2213254-2
 Mounting with 2 screws M3 x 8mm
 Green indicator marks