

CoolStar® 67 Designer series Cree XLamp LED Star Cooler ø67mm

Mounting Instruction

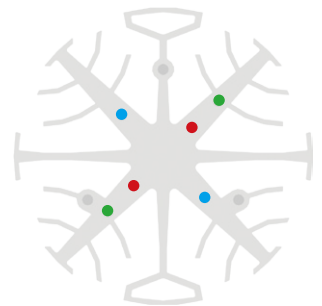


Cree XLamp® LEDs deliver the industry's best lighting-class performance and are application-optimized to enable the lowest system cost.

Cree's new CXA LED Arrays deliver high lumen output and efficacy in a family of single, easy-to-use components. Optimized to simplify designs and lower system cost, Cree's CXA LED arrays are available in system level performance from 300 to over 16,000 lumens and can enable applications ranging from GU10s and commercial downlights to outdoor area lighting and high-bay lighting.

Mounting indicator marks overview

MechaTronix recommends the use of a high thermal conductive interface between the LED module and the LED cooler. Either thermal grease, a thermal pad or a phase change thermal pad thickness 0.1-0.15mm is recommended. Thermal pads or phase change thermal pads can be pre-applied from MechaTronix.



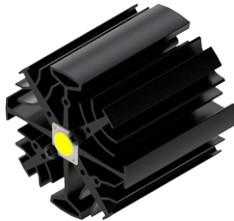
Cree XLamp CMT14 LED Array

Model names

- CMT1407
- CMT1412
- CMT1420

Mounting

- Direct mounting with 2 screws M3 x 6mm
Red indicator marks
- With Zhaga Book 3 LED holder
Bender+Wirth Hybrid holder 634a available with different housings
Mounting with 2 screws M3 x 6mm
Green indicator marks



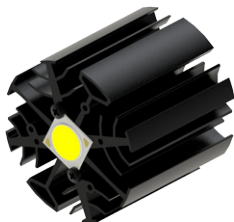
Cree XLamp CMT19 LED Array

Model names

- CMT1922
- CMT1925
- CMT1930

Mounting

- Direct mounting with 2 screws M3 x 6mm
Blue indicator marks
- With Zhaga Book 3 LED holder
TE Connectivity Lumawise type Z50 2213254
Bender+Wirth Hybrid holder 633c available with different housings
Mounting with 2 screws M3 x 6mm
Green indicator marks



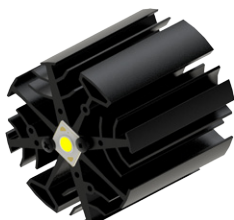
Cree XLamp CMA13 LED Array

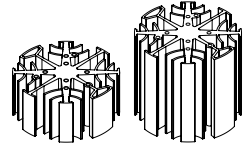
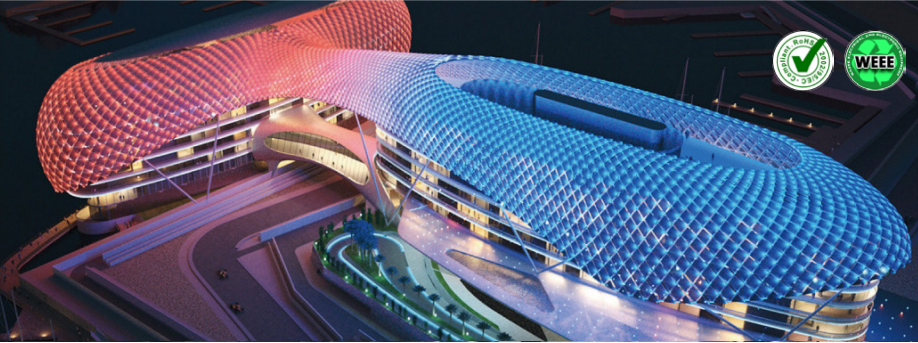
Model names

- CMA1303
- CMA1306

Mounting

- Direct mounting with 2 screws M3 x 6mm
Red indicator marks
- With Zhaga Book 3 LED holder
Bender+Wirth Hybrid holder 634c available with different housings
Mounting with 2 screws M3 x 6mm
Green indicator marks





ø67 x H30 / 60 (mm)
Rth 3.13 - 2.27 °C/W
Power Pd 16 - 22 W

[MORE PRODUCT DETAILS](#)

CoolStar® 67 Designer series Cree XLamp LED Star Cooler ø67mm

Mounting Instruction



Cree XLamp CMA15 LED Array

Model names

- CMA1516

Mounting

- With Zhaga Book 3 LED holder
Bender+Wirth Hybrid holder 641a available with different housings
Mounting with 2 screws M3 x 6mm
Green indicator marks



Cree XLamp CMA18 LED Array

Model names

- CMA1825

Mounting

- With Zhaga Book 3 LED holder
Bender+Wirth Hybrid holder 637a available with different housings
Mounting with 2 screws M3 x 6mm
Green indicator marks